

R:BASE X.5

Quick Installation Guide





R:BASE X.5

Quick Installation Guide

by R:BASE Technologies, Inc.

Welcome to R:BASE X.5 (Version 10.5)!

R:BASE X.5 (Version 10.5) is the innovative release from R:BASE Technologies offering the latest relational database elements to create function-rich and visually appealing applications.

The must-have powerful and flexible features give users an extended range of dashboard controls encompassing simplicity without sacrificing elegance.

Providing crucial data protection, that is also reliable and secure, R:BASE X.5 delivers a versatile environment for building robust systems for real time data analysis and essential business management.

R:BASE X.5 for Windows Quick Installation Guide

Copyright © 1982-2024 R:BASE Technologies, Inc.

Information in this document, including URL and other Internet web site references, is subject to change without notice. The example companies, individuals, products, organizations and events depicted herein are completely fictitious. Any similarity to a company, individual, product, organization or event is completely unintentional. R:BASE Technologies, Inc. shall not be liable for errors contained herein or for incidental consequential damages in connection with the furnishing, performance, or use of this material. This document contains proprietary information, which is protected by copyright. Complying with all applicable copyright laws is the responsibility of the user. Without limiting the rights under copyright, no part of this document may be reproduced, stored in or introduced into a retrieval system, or transmitted in any form or by any means (electronic, mechanical, photocopying, recording, or otherwise), or for any purpose, without the express written consent of R:BASE Technologies, Inc. We reserve the right to make changes from time to time in the contents hereof without obligation to notify any person of such revision or changes. We also reserve the right to change the specification without notice and may therefore not coincide with the contents of this document. The manufacturer assumes no responsibilities with regard to the performance or use of third party products.

Products that are referred to in this document may be either trademarks and/or registered trademarks of the respective owners. The publisher and the author make no claim to these trademarks.

The software described in this document is furnished under a license agreement. The software may be used or copied only in accordance with the terms of that agreement. Any unauthorized use or duplication of the software is forbidden.

R:BASE Technologies, Inc. may have patents, patent applications, trademarks, copyrights, or other intellectual property rights covering subject matter in this document. Except as expressly provided in any written license agreement from R:BASE Technologies, Inc., the furnishing of this document does not give you any license to these patents, trademarks, copyrights, or other intellectual property.

Trademarks

R:BASE®, Oterro®, RAdmin®, R:Scope®, R:Mail®, R:Charts®, R:Spell Checker®, R:Docs®, R:BASE Editor®, R:BASE Plugin Power Pack®, R:Style®, RBZip®, R:Mail Editor®, R:BASE Dependency Viewer®, R:Archive®, R:Chat®, R:PDF Form Filler®, R:FTPClient®, R:SFTPClient®, R:PDFWorks®, R:Magellan®, R:WEB Reports®, R:WEB Gateway®, R:PDFMerge®, R:PDFSearch®, R:Documenter®, R:Installer®, R:Updater®, R:AmazonS3®, R:GAP®, R:Mail Viewer®, R:Capture®, R:Synchronizer®, R:Biometric®, R:CAD Viewer®, R:DXF®, R:Twain2PDF®, R:Tango®, R:Scheduler®, R:Scribbler®, R:SmartSig®, R:OutLink®, R:HASH®, R:JobTrack®, R:TimeTrack®, R:Manufacturing®, R:GeoCoder®, R:Code®, R:Fax®, R:QBDataDirect®, R:QBSynchronizer®, R:QBDBExtractor®, and Pocket R:BASE® are trademarks or registered trademarks of R:BASE Technologies, Inc. All Rights Reserved. All other brand, product names, company names and logos are trademarks or registered trademarks of their respective companies.

Windows, Windows 11-10, Windows Server 2022-2012, Bing Maps, Excel, Access, SQL Server, and Outlook are registered trademarks of Microsoft Corporation. OpenOffice is a registered trademark of the Apache Software Foundation.

Printed: February 2024 in Murrysville, PA

First Edition

Table of Contents

Part I R:BASE X.5 Quick Installation Guide	5
1 System Requirements	6
2 Things You Will Need	6
3 Setup Initialization	7
Welcome	7
License	8
Readme Information	9
Components	9
User Information	11
Destination Folder	12
Installation Progress	12
Process Completed	14
4 Starting R:BASE for the First Time	14
Part II Product Updates	17
Part III Technical Support	19
Part IV Useful Resources	21
Index	23

Part



1 R:BASE X.5 Quick Installation Guide

1.1 System Requirements

The following system specifications are recommended for the optimal use of R:BASE and R:BASE-related software.

Workstation Hardware

- 2-Core 2GHz+ CPU
- 2 GB of available RAM (4 GB recommended)
- 2 GB of available hard disk space
- 1024x768 or higher resolution video adapter and display
- Standard mouse or compatible pointing device
- Standard keyboard

Server Hardware

- 2-Core 2GHz+ CPU
- 6 GB of available RAM (8 GB recommended)

Operating System

- Microsoft Windows 11 (Professional)
- Microsoft Windows 10 (Professional)
- Microsoft Windows Server 2022
- Microsoft Windows Server 2019
- Microsoft Windows Server 2016
- Microsoft Windows Server 2012, 2012 R2

Network

- Ethernet infrastructure (Gigabyte recommended)
- Internet connection recommended, but not required, for license activation, software updates, and support
- Anti-virus programs should exclude the R:BASE program, and any add-on product, executable and database files

1.2 Things You Will Need

- License Key

Before launching the installer, it is recommended that you have your 32-character License Key readily available. The License Key is provided in a document, with the email message, when the software was originally purchased. If you have lost or misplaced your License Key, please contact our Support Staff by email at support@rbase.com.

- Internet Access

The computer where the software will be launched should have access to the Internet for activation. The Internet access is used to visit the R:BASE Technologies Web site to provide your required Activation Key.

In instances where the software will be installed on a computer that is not connected to the Internet, you must then contact R:BASE Technologies to provide information displayed on the computer screen. Please contact our Product Activation Staff by email at activationkey@rbase.com. The Registration Number must be provided. The Registration Number is displayed on the invoice/order slip, and within the email, when the software was originally purchased.

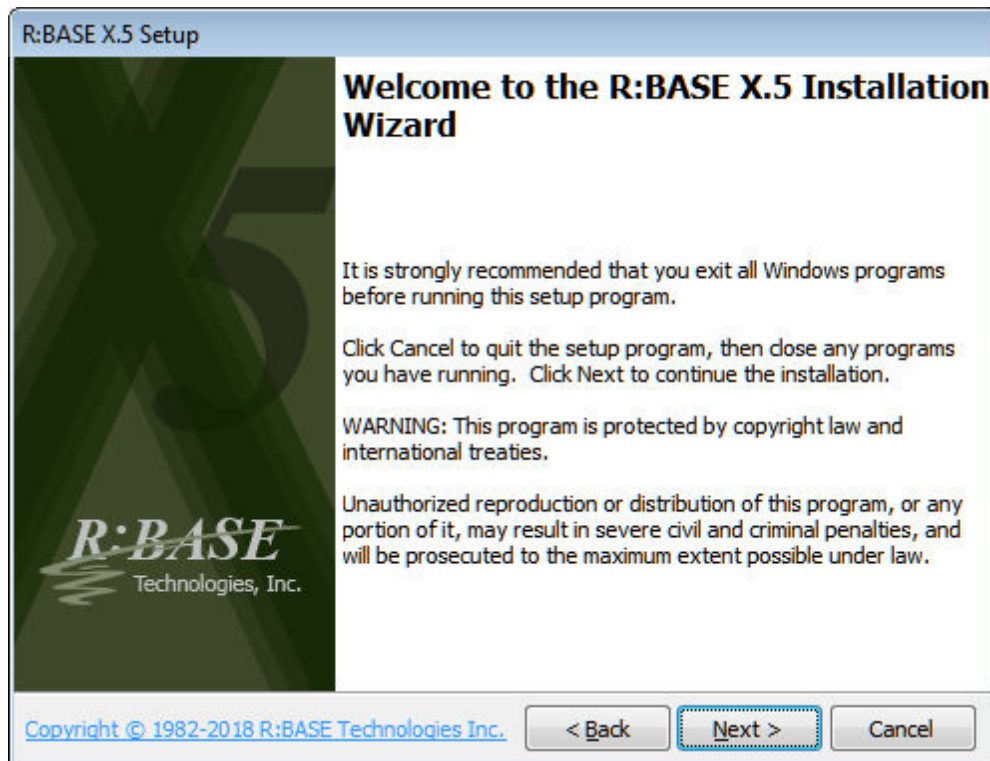
1.3 Setup Initialization

Make sure to log into the computer as the Administrator when installing R:BASE. Otherwise, you will not be able to install the software properly.

Run the installer ".exe", provided by download, while physically sitting at the workstation to begin the installation process.

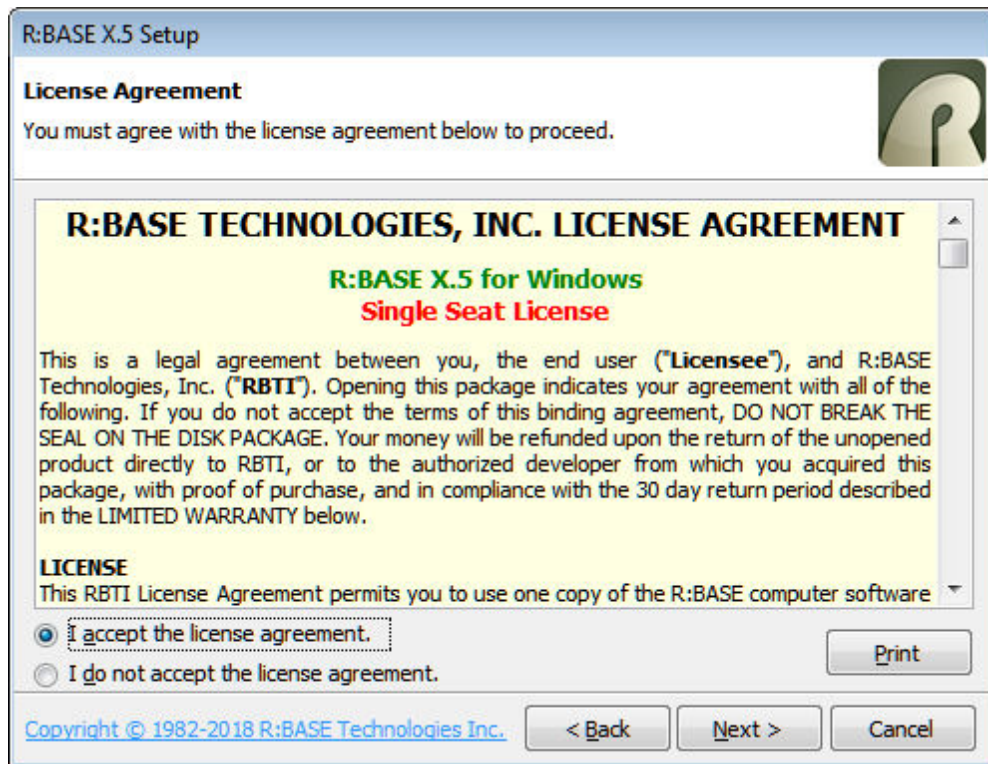
1.3.1 Welcome

The R:BASE for Windows setup was designed to make the process as simple and efficient as possible. After the initialization process, you will be presented with the Welcome screen.



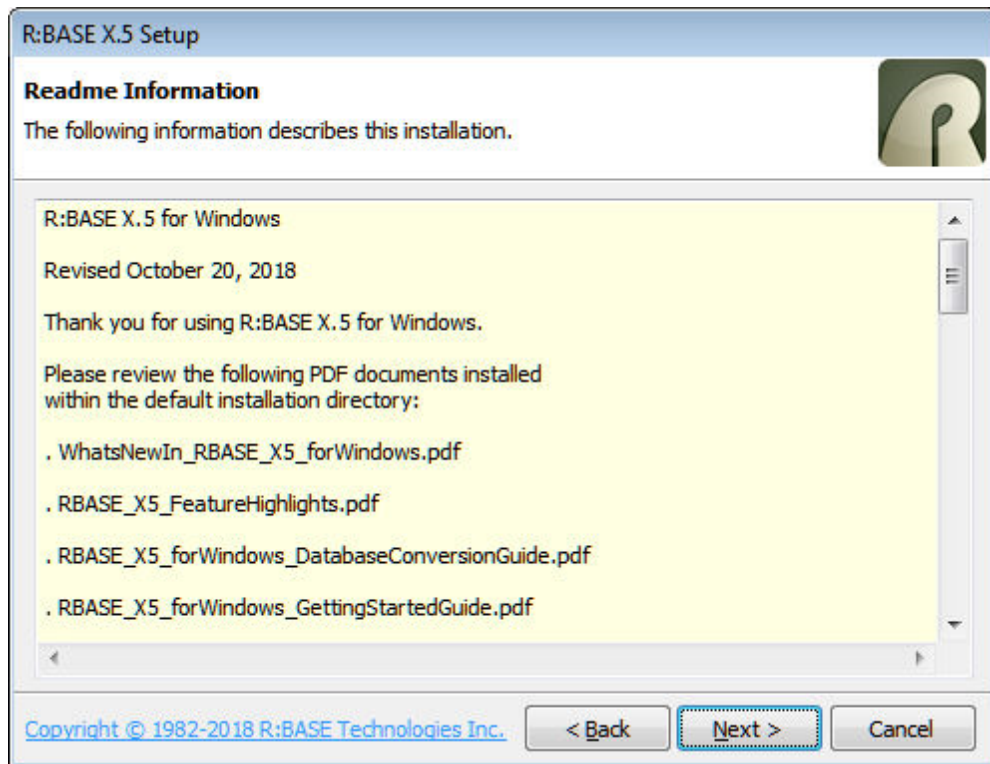
Click "Next" to this screen, you will be advance to the License screen.

1.3.2 License



Before you will be allowed to continue, you must agree to the license by clicking the "I accept the license agreement" radio button. Only then will you be able to press the "Next" button to continue.

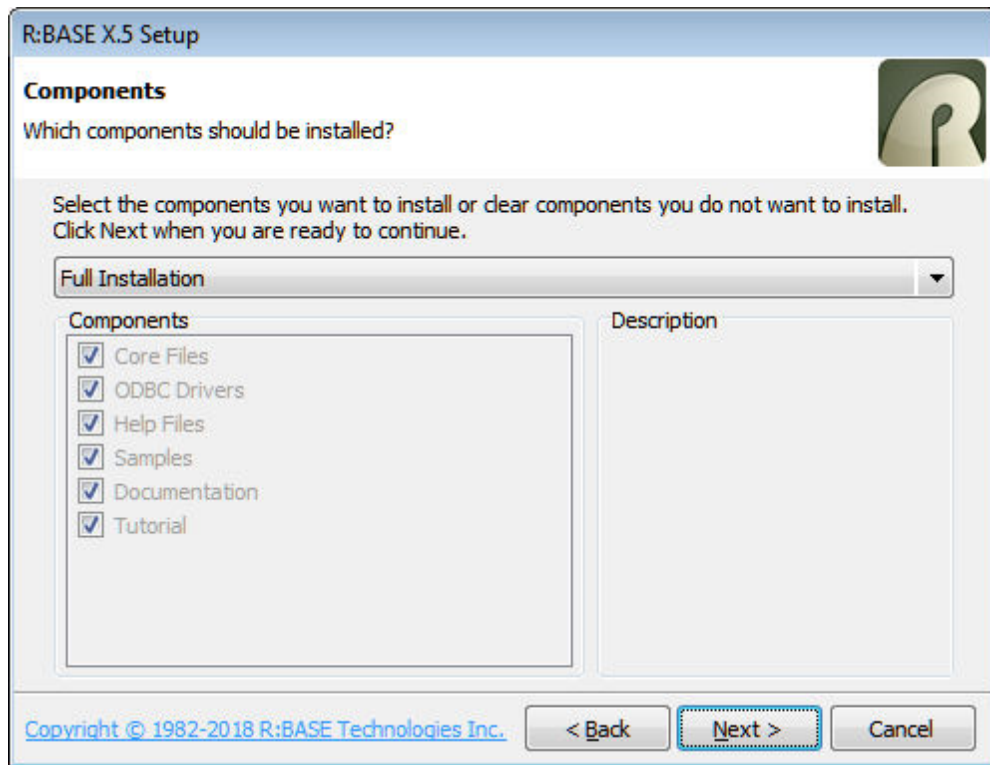
1.3.3 Readme Information



Press the "Next" button to continue after reading the information.

1.3.4 Components

The Components screen allows for four different installation methods for R:BASE; **Full**, **Compact**, **Custom** and **Server**.



Components	Full	Compact	Custom	Server
Core Files	Yes	Yes	Yes	Yes
ODBC	Yes	No	Optional	Yes
Help Files (CHM)	Yes	Yes	Optional	Yes
Documentation (PDF)	Yes	No	Optional	Yes
Samples	Yes	No	Optional	Yes
Tutorial	Yes	No	Optional	Yes
R:BASE Editor Schemes	All	R:BASE Only	All	All

Client Installation

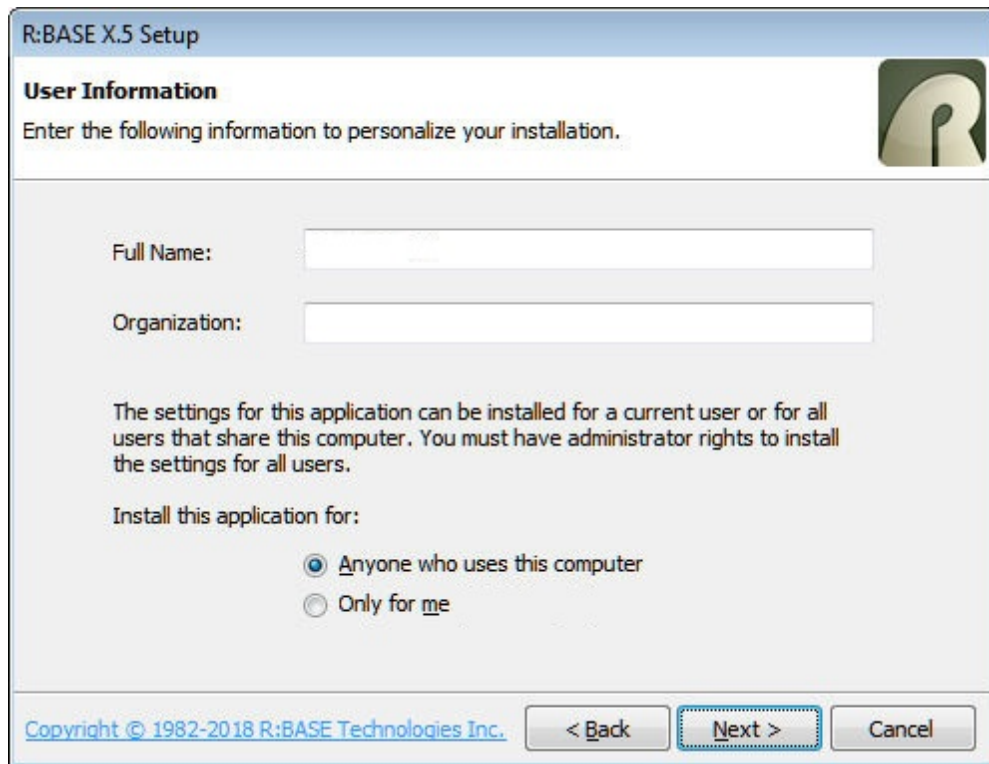
The Full, Compact, and Custom installation options are for users that want R:BASE installed upon the client workstation. These methods will load the executables into the program directory and the engine files into the system directory.

Server Installation

When choosing the Server Installation, all files are installed into the selected [Destination Folder](#). The Server Installation is the typical installation choice for network administrators and developers that want R:BASE installed upon a centralized location within a local area network.

It is beneficial to use this method when there are a great number of users which will be launching the R:BASE software. Another benefit is that when applying R:BASE updates, there is only one installation to be updated, other than updating every workstation individually.

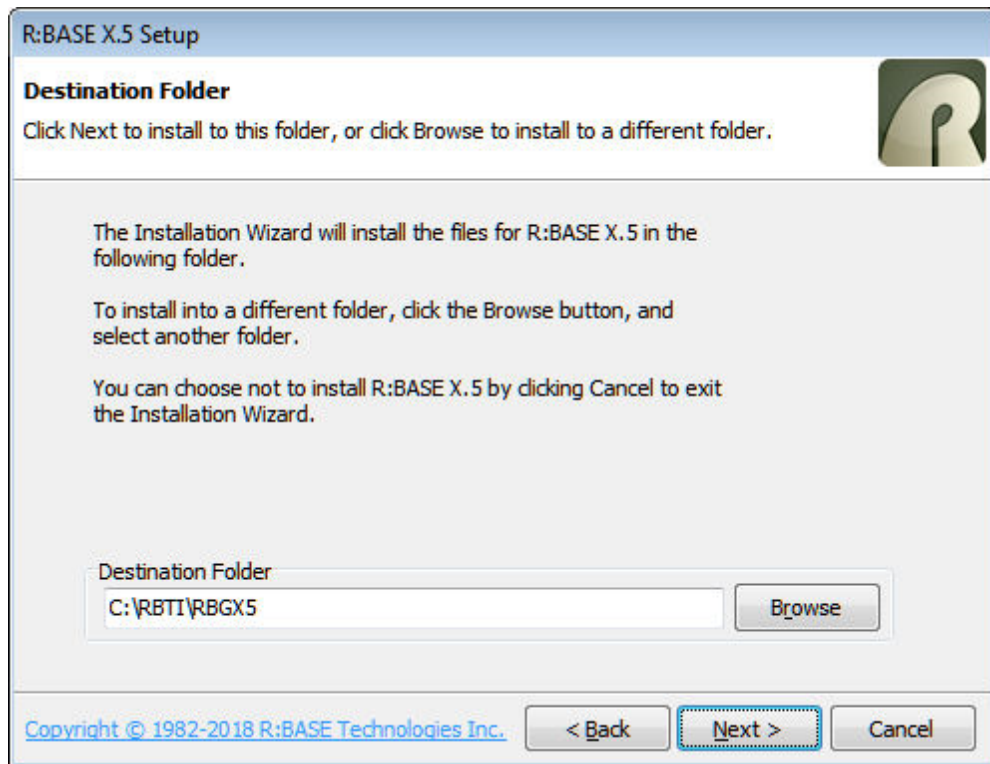
1.3.5 User Information



The screenshot shows the 'R:BASE X.5 Setup' dialog box with the 'User Information' tab selected. The dialog has a title bar with the text 'R:BASE X.5 Setup' and a small logo on the right. Below the title bar, the text 'User Information' is displayed in bold, followed by the instruction 'Enter the following information to personalize your installation.' There are two text input fields: 'Full Name:' and 'Organization:'. Below these fields, a paragraph of text explains that settings can be installed for a current user or for all users, and that administrator rights are required for all users. Underneath, the text 'Install this application for:' is followed by two radio buttons: 'Anyone who uses this computer' (which is selected) and 'Only for me'. At the bottom of the dialog, there is a copyright notice 'Copyright © 1982-2018 R:BASE Technologies Inc.' and three buttons: '< Back', 'Next >' (which is highlighted with a dashed border), and 'Cancel'.

The User Information screen allows you to enter personal information for the installation. You can also choose between installing the program for "Anyone who uses this computer" that may log onto the machine, or just for yourself. This option determines whether desktop and program shortcuts are provided just yourself, or all who use the computer. Select the appropriate radio button after entering your information and press "Next" to continue.

1.3.6 Destination Folder



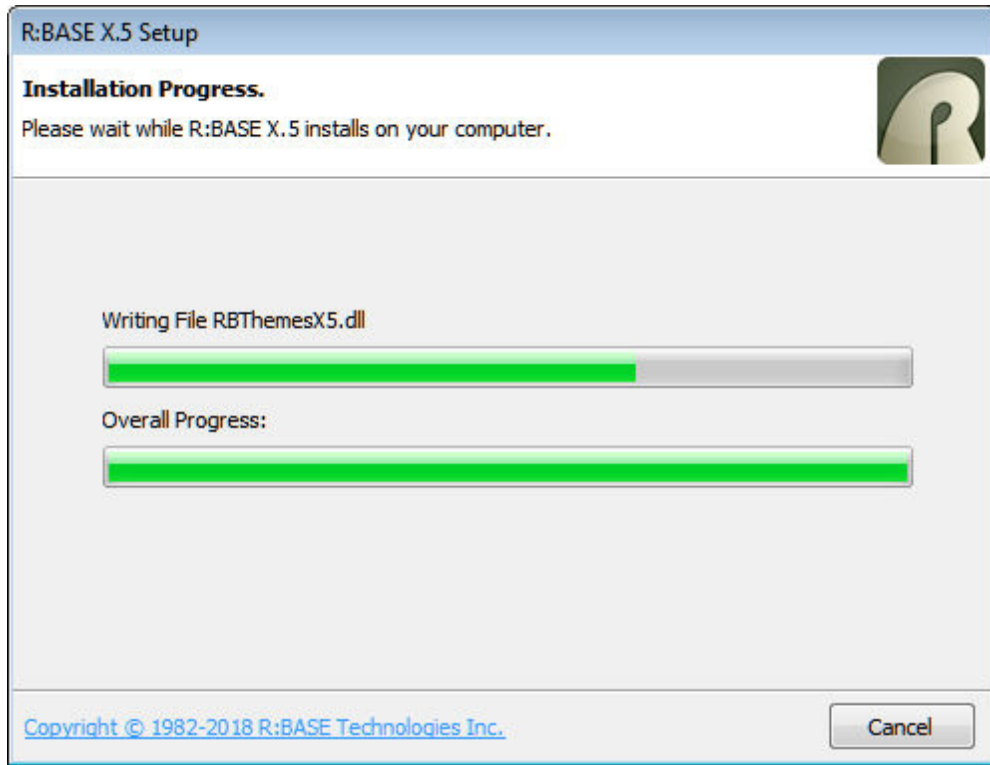
The Destination Folder screen allows you to tell the installer where you would like the program to be installed.

Simply click the "Browse" button to navigate to your desired location. The installer will create the directory you choose if it does not already exist. The program will be installed in a subdirectory of your chosen location.

When finished, press "Next" to continue.

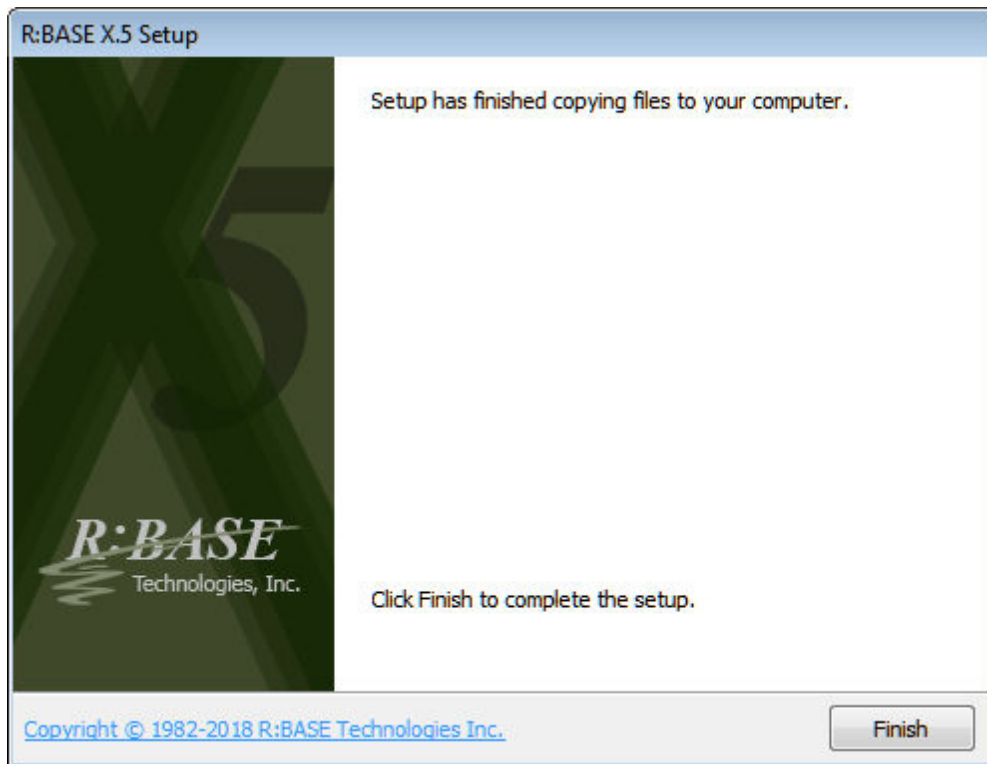
1.3.7 Installation Progress

The installation process will show you the status of the installation. If any errors occur, they will display during this process.



Sit back and relax while the program does its work!

1.3.8 Process Completed



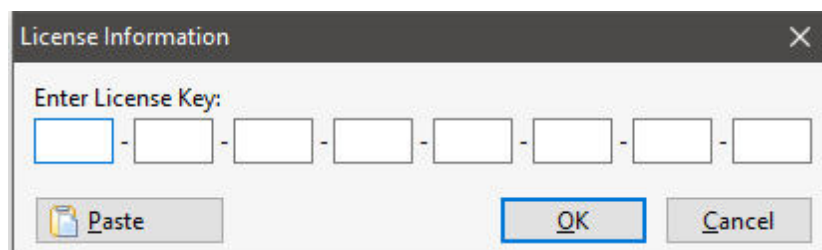
When you receive this screen, the installation process has successfully completed.

Press "Finish" to finalize the installation and begin using R:BASE X.5!

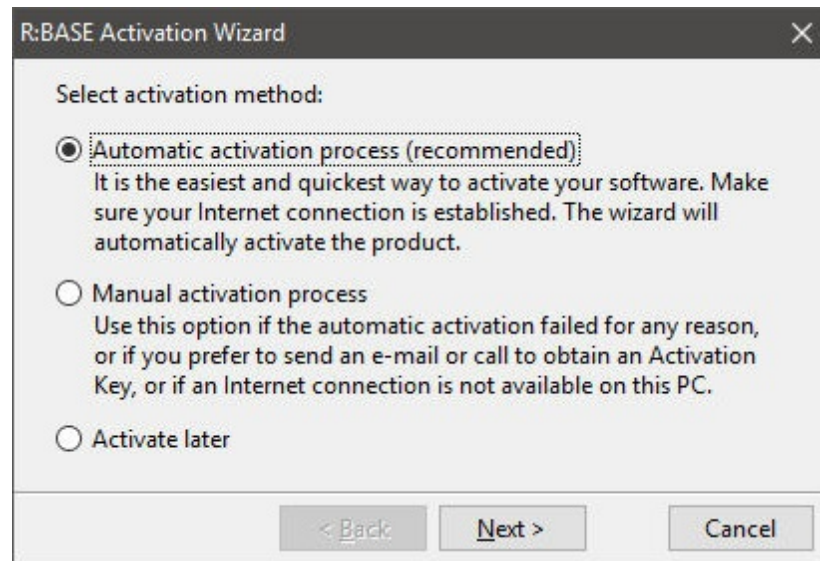
1.4 Starting R:BASE for the First Time

When starting R:BASE X.5 for Windows for the first time, you will be prompted for your product License Key, followed by the activation process.

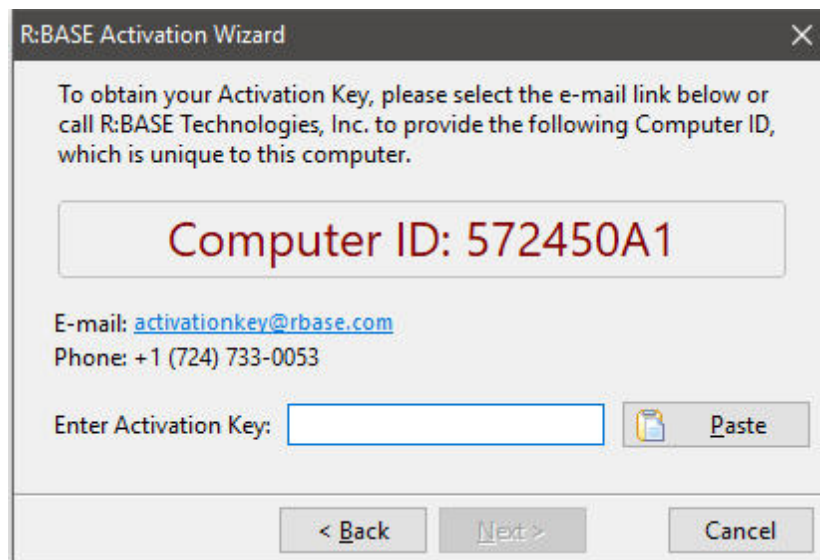
After launching R:BASE, you will be prompted to enter your 32-character License Key, which is provided with your product and is located on a label above the installation CD on the inside of the protective product case.



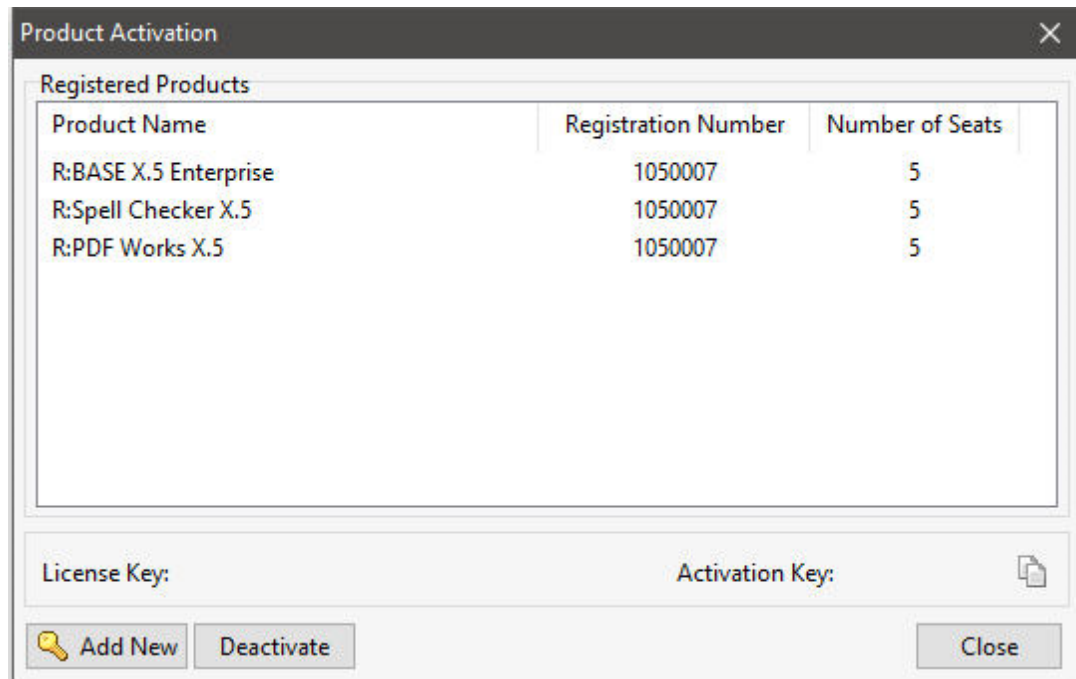
After entering the License Key, you will see a dialog to prompt for your activation method. The software can be activated automatically over the Internet, or manually by retrieving an Activation Key from R:BASE Technologies by email or over the phone. If you select "Later", you will be reminded each time R:BASE starts to activate your copy.



When activating the software manually, you select the e-mail link to launch your email client and send a pre-formatted message to R:BASE Technologies that will contain your License Key and the displayed Computer ID. You will need to provide your R:BASE Registration Number and Computer ID.

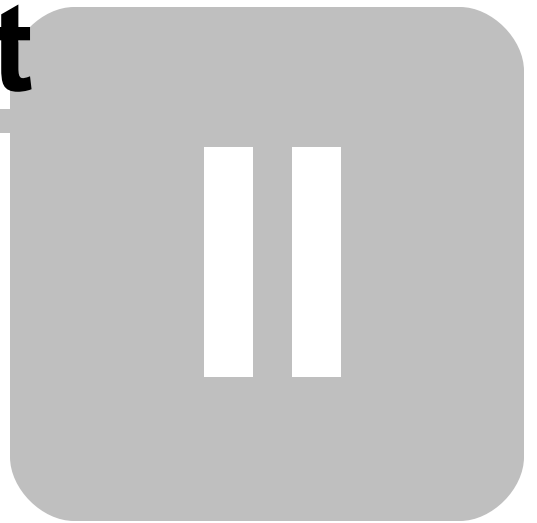


At any time, you can review your product information by starting R:BASE X.5, and from the Menu Bar clicking on "Help" > "Product Activation". Your R:BASE Registration Number is displayed on the window. You can also enter additional License Keys for R:BASE add-on products.



Please be advised that if you are activating multiple workstations, it is highly recommended that you keep records of the computer name, Computer ID and Activation Key for future reference. Access to this information will prove convenient in the event of a hardware failure or license transfer when uninstalling R:BASE.

Part



2 Product Updates

Be sure you have applied the latest updates for R:BASE after the installation. Product updates are available at <http://www.rbaseupdates.com>. Product updates are available to all current users who have purchased the product within one year or have subscribed to an R:BASE Software Assurance Plan (R:SAP)

R:BASE product updates are cumulative. You are only required to apply the latest update in order to update the program. All intermittent updates do not need to be applied. After downloading and launching an update, the "Client" and "Server" update options are available:

Client Installation

Before installing R:BASE updates on client workstations, you must close the R:BASE program!

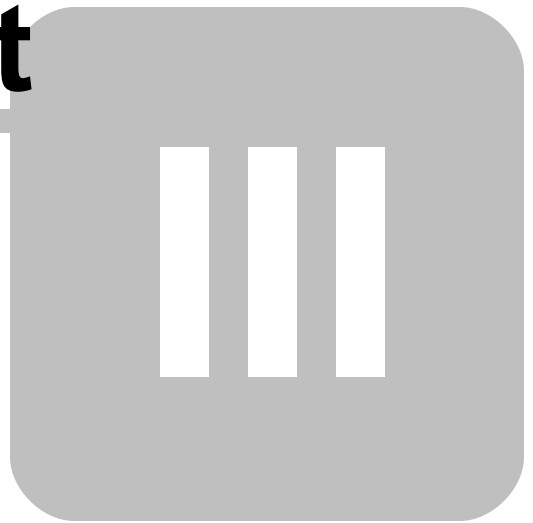
When applying updates for client installations you will use the "Typical Update" button. This will place R:BASE program DLLs into the system directory and R:BASE program executable and associated updates into the R:BASE program direct (default: C:\RBTI\RBGX5). If you have altered the default installation path, you must use the "Browse" button to change the update destination for the R:BASE program files.

Server Installation

Before installing R:BASE updates on a server installation, you must make sure all client workstations close the R:BASE program!

When applying updates on the server, you will use the "Server Update" button. This will place R:BASE program DLLs, program executable, and associated updates into a single directory. You must use the "Browse" button to change the update destination for all of the R:BASE files.

Part



3 Technical Support

Please read over the help documentation at least once before seeking support. We have worked very hard to make the help documentation clear and useful, but concise. It is suggested that you reread these instructions once you have become accustomed to using the software, as new uses will become apparent.

If you have further questions, and cannot find the answers in the documentation, you can obtain information from the below sources:

- Email our Technical Support Staff at: support@rbase.com
- Access the R:BASE Technologies Support home page online at <https://www.rbase.com/support>

You may be required to purchase a technical support plan. Several support plans are available to suit the needs of all users. [Available Technical Support Plans](#)

Please be prepared to provide the following:

- The product registration number, which is located on the invoice/order slip for the purchased product
- The type of operating system and hardware in use
- Details regarding your operating environment; such as available memory, disk space, your version of R:BASE, local area network, special drivers, related database structures, application files, and other files that are used or accessed by your application

All provide information will be used to better assist you.

R:BASE Technologies has a number of different services available for R:BASE products. As a registered user, you will receive information about new features for R:BASE and other R:BASE Technologies products. Please remember to register your software. <https://www.rbase.com/register/>

Part



4 Useful Resources

- . R:BASE Home Page: <https://www.rbase.com>
- . Up-to-Date R:BASE Updates: <https://www.rbaseupdates.com>
- . Current Product Details and Documentation: <https://www.rbase.com/rbgx5>
- . Support Home Page: <https://www.rbase.com/support>
- . Product Registration: <https://www.rbase.com/register>
- . Official R:BASE Facebook Page: <https://www.facebook.com/rbase>
- . Sample Applications: <https://www.razzak.com/sampleapplications>
- . Technical Documents (From the Edge): <https://www.razzak.com/fte>
- . Education and Training: <https://www.rbase.com/training>
- . Product News: <https://www.rbase.com/news>
- . Upcoming Events: <https://www.rbase.com/events>
- . R:BASE Online Help Manual: <https://www.rbase.com/support/rsyntax>
- . Form Properties Documentation: <https://www.rbase.com/support/FormProperties.pdf>
- . R:BASE Beginners Tutorial: <https://www.rbase.com/support/rtutorial>
- . R:BASE Solutions (Vertical Market Applications): <https://www.rbase.com/products/rbasesolutions>

Index

- A -

activate 6
Activation Key 14
administrator 6

- C -

Client 9
Client Installation 18
Compact 9
Components 9
Custom 9

- D -

destination folder 12

- F -

Full 9

- I -

Installation 9

- K -

key, activation 6
key, license 6

- L -

license 6, 8
License Key 14

- P -

permission 6
product updates 18

- R -

Readme 9
registration number 6

- S -

Server 9
Server Installation 18
Server Update 18
setup 7
support 6
system requirements 6

- T -

Typical Update 18

- U -

UAC 6
update, client 18
update, server 18
updates 18
User Access Control 6

Notes