

What's New  
in  
**R:BASE 11**  
for Windows





# **R:BASE 11 for Windows**

## **What's New**

---

*by R:BASE Technologies, Inc.*

*Welcome to R:BASE 11 for Windows!*

*R:BASE 11 is the new major release from R:BASE Technologies showcasing the latest advances for your databases and applications.*

*R:BASE 11 combines pure performance and high-tech features with a practical interface for users of all levels. R:BASE 11 users can achieve peak productivity to overachieve, outperform, and over-deliver on data management goals.*

# What's New in R:BASE 11

## Copyright © 1982-2024 R:BASE Technologies, Inc.

Information in this document, including URL and other Internet web site references, is subject to change without notice. The example companies, individuals, products, organizations and events depicted herein are completely fictitious. Any similarity to a company, individual, product, organization or event is completely unintentional. R:BASE Technologies, Inc. shall not be liable for errors contained herein or for incidental consequential damages in connection with the furnishing, performance, or use of this material. This document contains proprietary information, which is protected by copyright. Complying with all applicable copyright laws is the responsibility of the user. Without limiting the rights under copyright, no part of this document may be reproduced, stored in or introduced into a retrieval system, or transmitted in any form or by any means (electronic, mechanical, photocopying, recording, or otherwise), or for any purpose, without the express written consent of R:BASE Technologies, Inc. We reserve the right to make changes from time to time in the contents hereof without obligation to notify any person of such revision or changes. We also reserve the right to change the specification without notice and may therefore not coincide with the contents of this document. The manufacturer assumes no responsibilities with regard to the performance or use of third party products.

Products that are referred to in this document may be either trademarks and/or registered trademarks of the respective owners. The publisher and the author make no claim to these trademarks.

The software described in this document is furnished under a license agreement. The software may be used or copied only in accordance with the terms of that agreement. Any unauthorized use or duplication of the software is forbidden.

R:BASE Technologies, Inc. may have patents, patent applications, trademarks, copyrights, or other intellectual property rights covering subject matter in this document. Except as expressly provided in any written license agreement from R:BASE Technologies, Inc., the furnishing of this document does not give you any license to these patents, trademarks, copyrights, or other intellectual property.

## Trademarks

R:BASE®, Oterro®, RAdmin®, R:Scope®, R:Mail®, R:Charts®, R:Spell Checker®, R:Docs®, R:BASE Editor®, R:BASE Plugin Power Pack®, R:Style®, RBZip®, R:Mail Editor®, R:BASE Dependency Viewer®, R:Archive®, R:Chat®, R:PDF Form Filler®, R:FTPClient®, R:SFTPClient®, R:PDFWorks®, R:Magellan®, R:WEB Reports®, R:WEB Gateway®, R:PDFMerge®, R:PDFSearch®, R:Documenter®, R:Installer®, R:Updater®, R:AmazonS3®, R:GAP®, R:Mail Viewer®, R:Capture®, R:Synchronizer®, R:Biometric®, R:CAD Viewer®, R:DXF®, R:Twain2PDF®, R:Tango®, R:Scheduler®, R:Scribbler®, R:SmartSig®, R:OutLink®, R:HASH®, R:JobTrack®, R:TimeTrack®, R:Manufacturing®, R:GeoCoder®, R:Code®, R:Fax®, R:QBDataDirect®, R:QBSynchronizer®, R:QBDBExtractor®, and Pocket R:BASE® are trademarks or registered trademarks of R:BASE Technologies, Inc. All Rights Reserved. All other brand, product names, company names and logos are trademarks or registered trademarks of their respective companies.

Windows, Windows 11-10, Windows Server 2022-2012, Bing Maps, Word, Excel, Access, SQL Server, and Outlook are registered trademarks of Microsoft Corporation. OpenOffice is a registered trademark of the Apache Software Foundation.

Printed: April 2024 in Murrysville, PA

First Edition

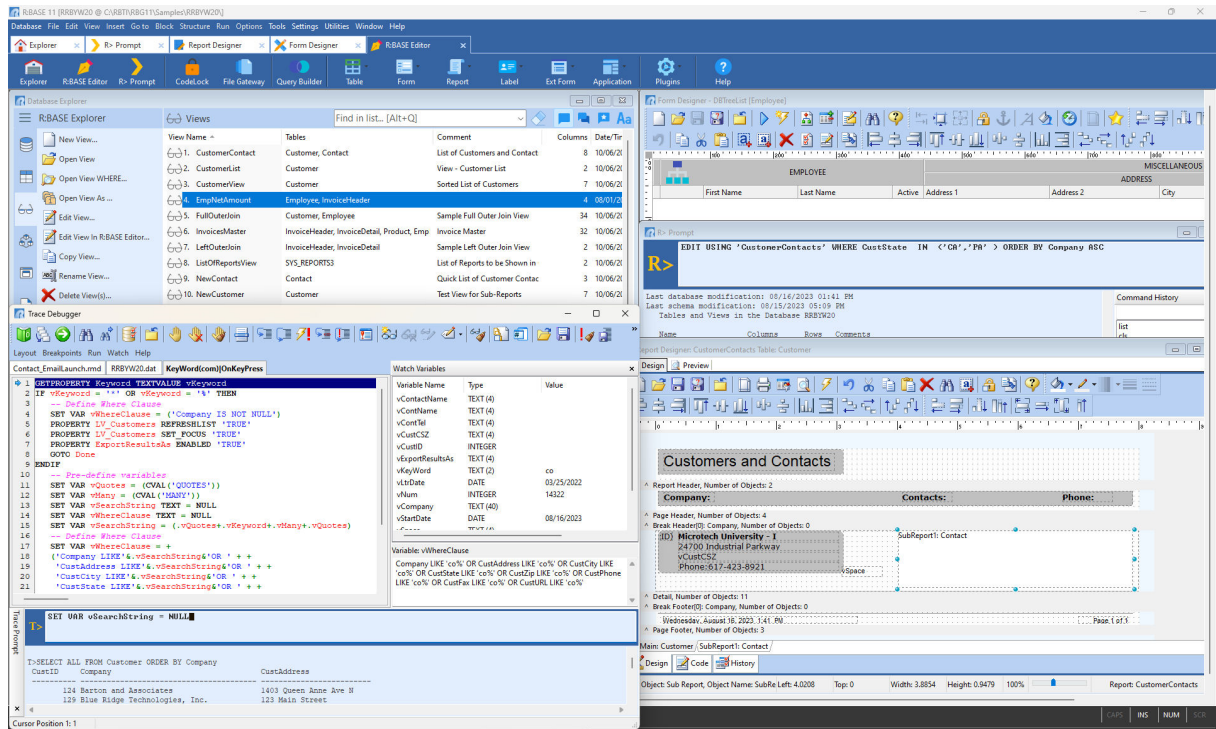
# Table of Contents

<b>Part I Global Environment</b>	<b>5</b>
<b>Part II Commands</b>	<b>15</b>
<b>Part III Data Browser/Editor</b>	<b>18</b>
<b>Part IV Database Explorer</b>	<b>19</b>
<b>Part V Data Designer</b>	<b>27</b>
<b>Part VI File Gateway</b>	<b>30</b>
<b>Part VII Forms</b>	<b>33</b>
<b>Part VIII Functions</b>	<b>43</b>
<b>Part IX Query Builder/Query Wizard</b>	<b>44</b>
<b>Part X R:BASE Editor</b>	<b>46</b>
<b>Part XI R&gt; Prompt</b>	<b>49</b>
<b>Part XII Reports and Labels</b>	<b>51</b>
<b>Part XIII Stored Procedures</b>	<b>59</b>
<b>Part XIV Trace Debugger</b>	<b>60</b>
<b>Part XV User Privileges</b>	<b>63</b>

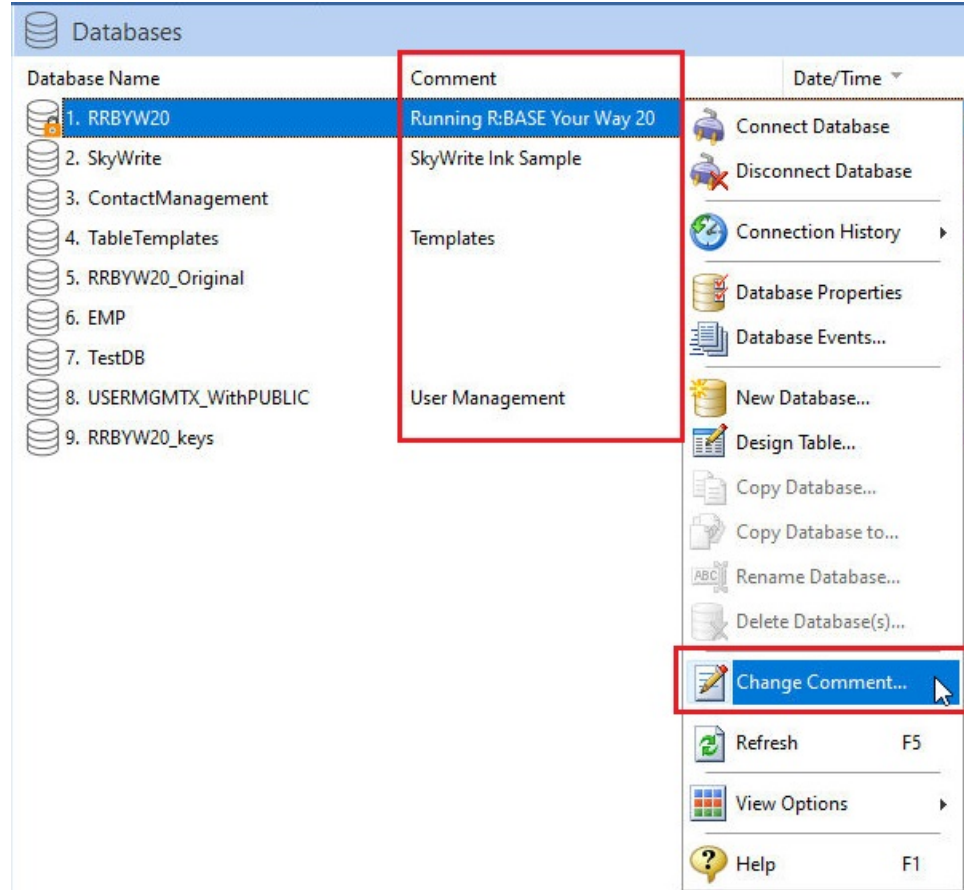
# 1 Global Environment

The following Version 11 features compliment several or all areas of the R:BASE development environment:

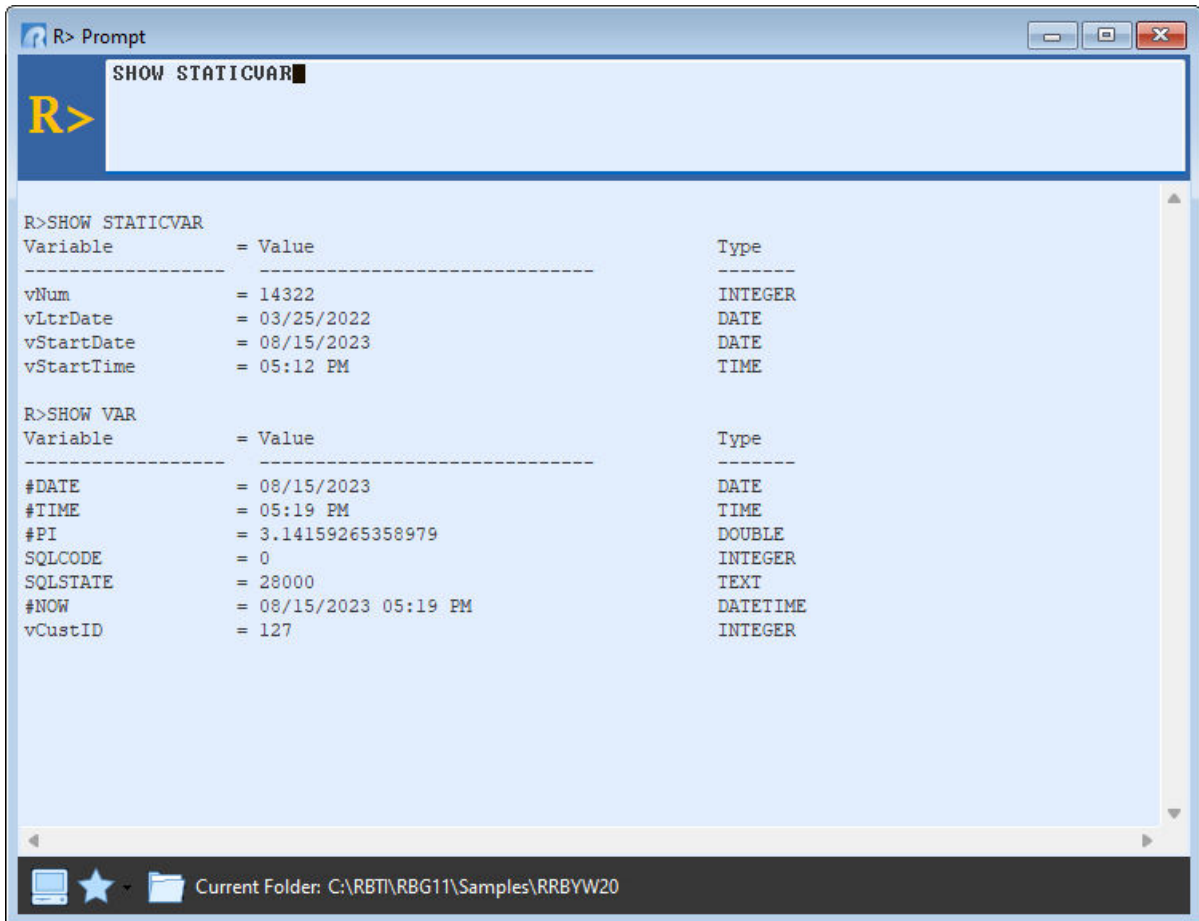
- Updated GUI for latest operating systems



- Enhanced NOTE data type to hold up to 10,000 characters
- New Database Comments (stored as notes within file 1), which are available for review at the Database Explorer, Data Dictionary, and Databases Properties



- New database stored static variables, which are automatically defined when the database is connected



The screenshot shows an R prompt window titled "R> Prompt" with a yellow "R>" logo. The window contains the following text:

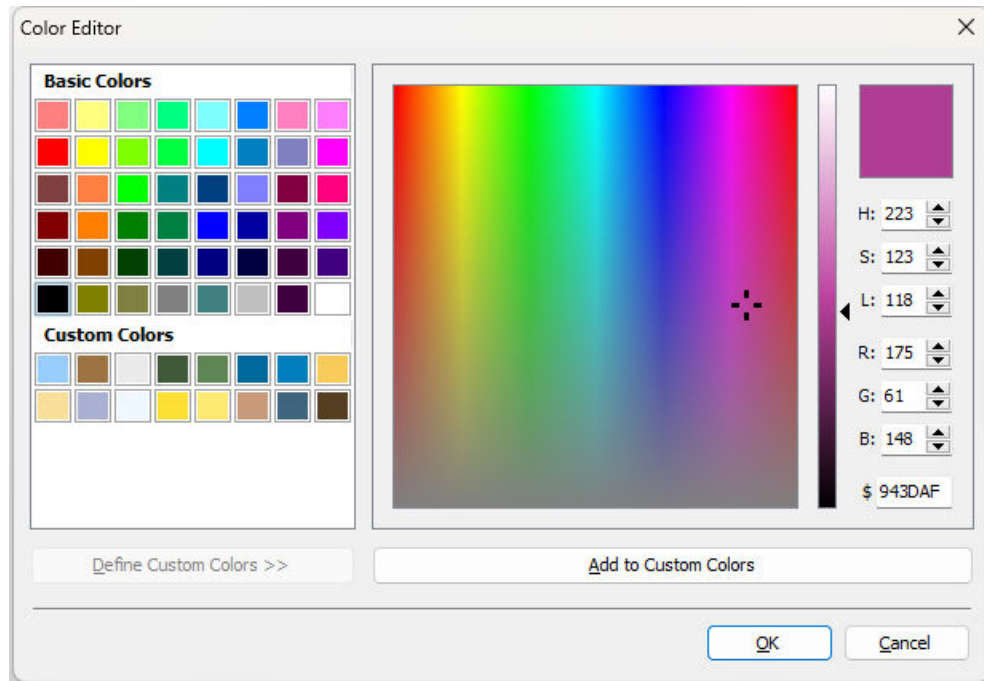
```
SHOW STATICVAR
```

```
R>SHOW STATICVAR
Variable      = Value                                     Type
-----
vNum          = 14322                                       INTEGER
vLtrDate     = 03/25/2022                                  DATE
vStartDate   = 08/15/2023                                  DATE
vStartTime   = 05:12 PM                                    TIME
```

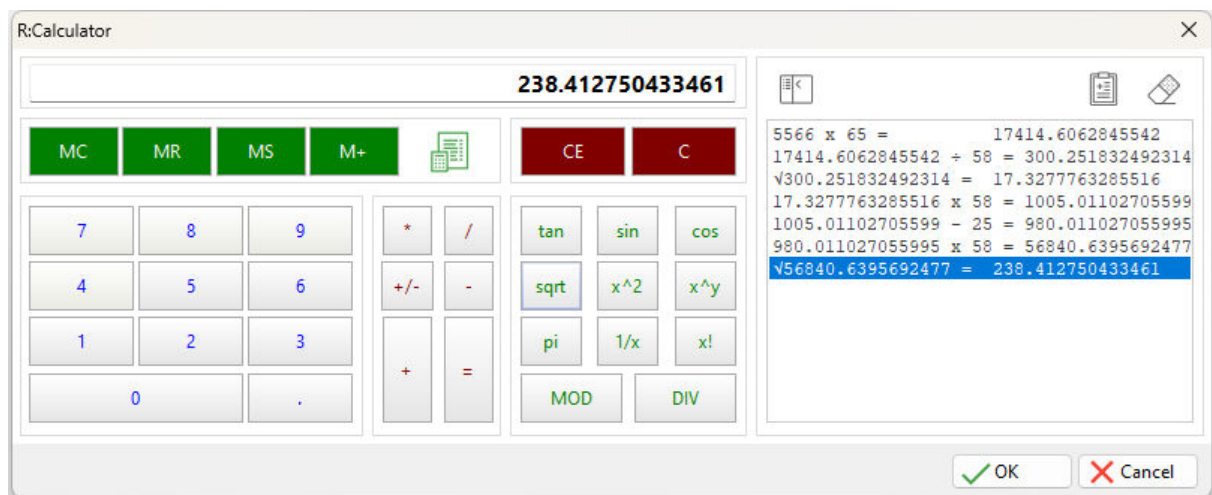
```
R>SHOW VAR
Variable      = Value                                     Type
-----
#DATE        = 08/15/2023                                  DATE
#TIME        = 05:19 PM                                    TIME
#PI          = 3.14159265358979                            DOUBLE
SQLCODE      = 0                                           INTEGER
SQLSTATE     = 28000                                       TEXT
#NOW         = 08/15/2023 05:19 PM                       DATETIME
vCustID      = 127                                         INTEGER
```

The status bar at the bottom of the window shows "Current Folder: C:\RBT\RBG11\Samples\RRBYW20".

- Enhanced Color Editor dialog for background/foreground colors, object properties, and in other areas where a color may be selected

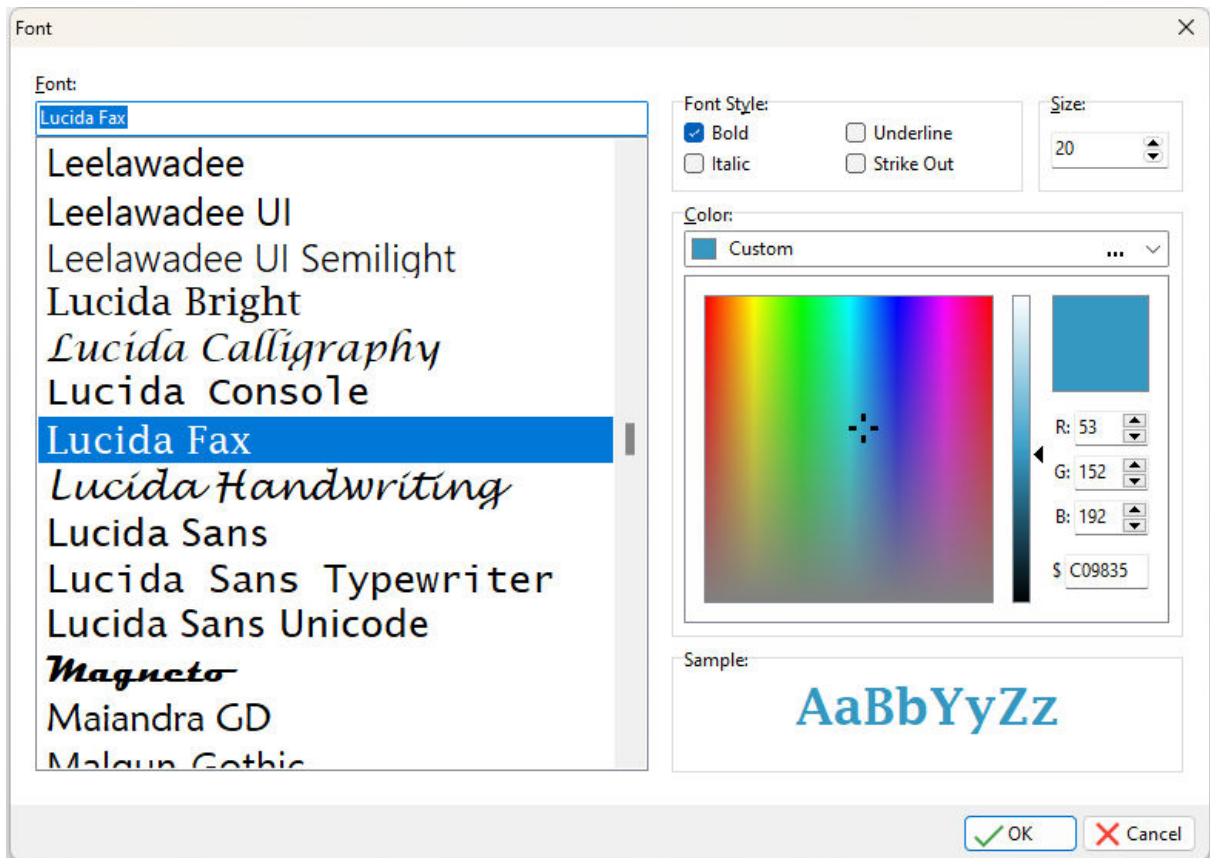


- Enhanced R:Calculator plugin with history (persisted between sessions)

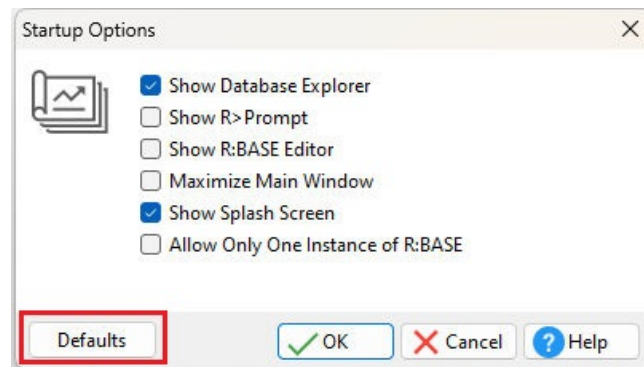




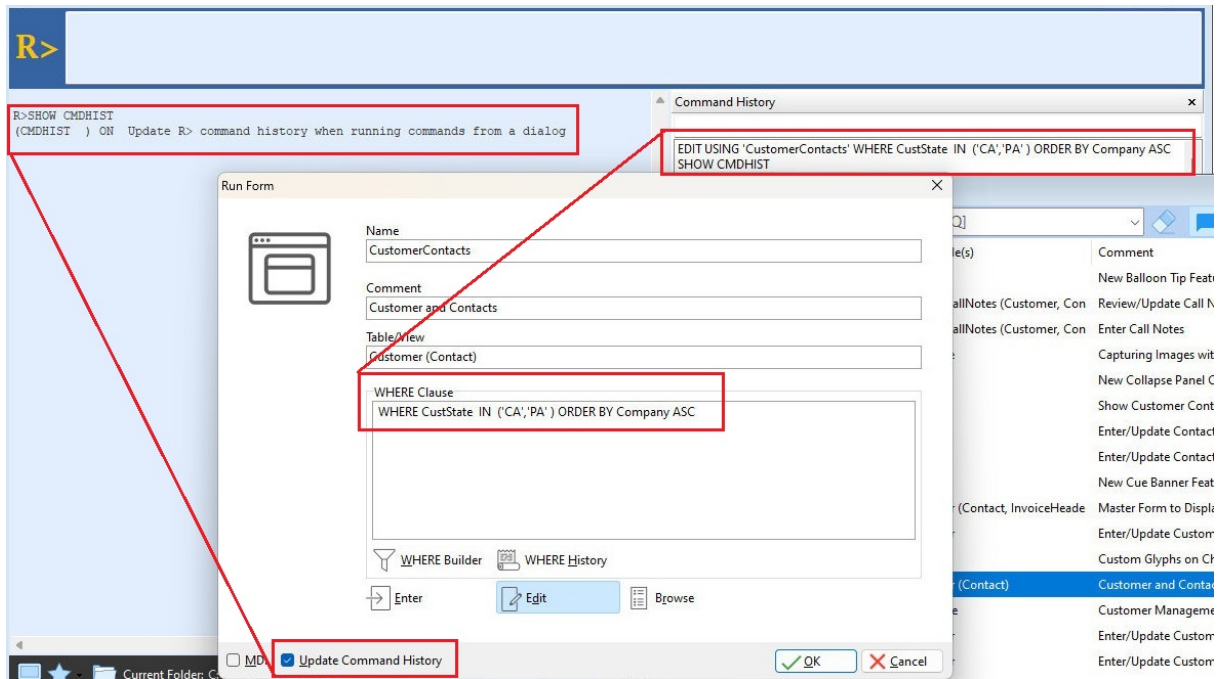
- Enhanced Font dialog for designers, with font type preview and color customization



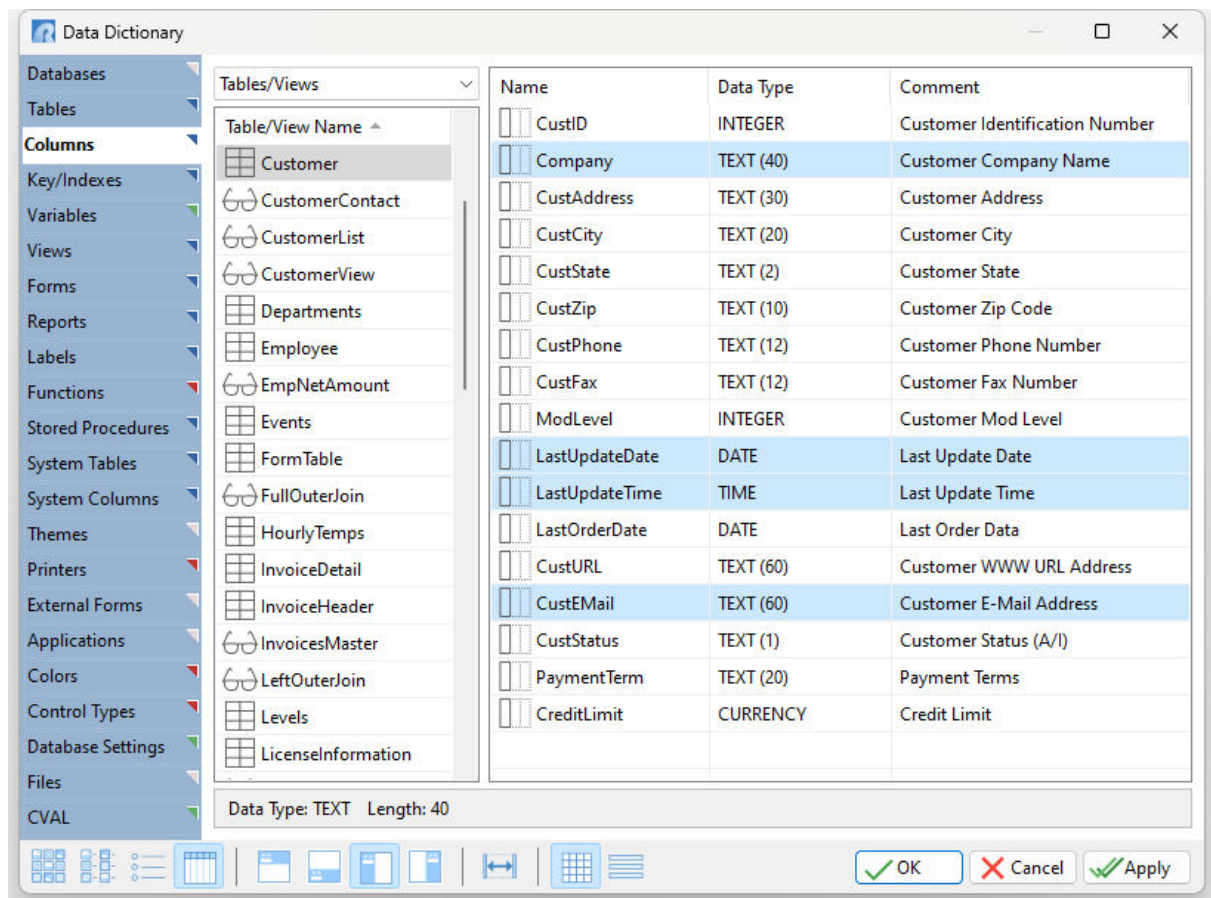
- Added "Defaults" button for the R:BASE Startup Options



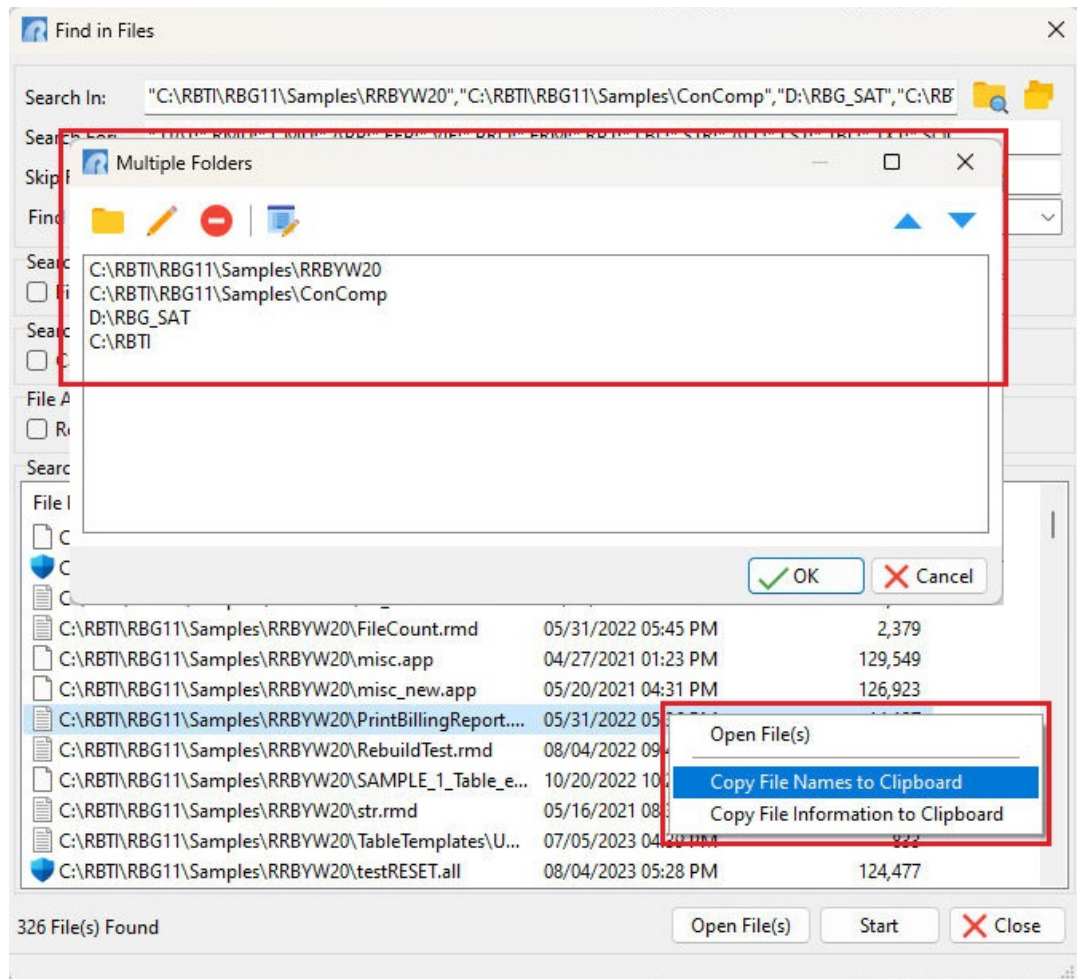
- New CMDHIST setting to control the "Update Command History" check box, when running forms and printing reports/labels from the Database Explorer. When enabled, the "Update Command History" check box will place the syntax used within the R> Prompt Command History tool bar, for easy reference at a later time.



- Redesigned Data Dictionary utility
  - Preferred Tabs Location - places the tab at the desired top, bottom, left, or right edge
  - Linked Tables/Columns - when a table is selected in the Tables tab, it is preselected when viewing the Columns tab (for SYSTEM TABLES also)
  - Space Separated Values - includes a space directly after the comma, so that after a string of values are added to a command file, the [Ctrl+Arrow] keys can be used to move the cursor between values with greater ease
  - Prioritize Tab Order - reorganize the tab stacking order with drag-and-drop
  - MDI Support - the utility recognizes the MDI setting, and will remain open while other areas of R:BASE are used
  - Content Refresh - when focus is switched back to the Data Dictionary, the content will automatically refresh (only in MDI mode)
  - Color Value Conversions - provides a "Color Tool" mechanism to convert RGB colors to numbers
  - Tab Navigation - the [Ctrl+Page Down] and [Ctrl+Page Up] hot keys allow the next/previous tab navigation
  - Color Identifiers - the tabs are organized with distinctive color identifiers (triangle in top right corner) to improve the readability for the several different types of information presented
  - Theme Preview - the Themes tab includes a preview button to review the theme presentation

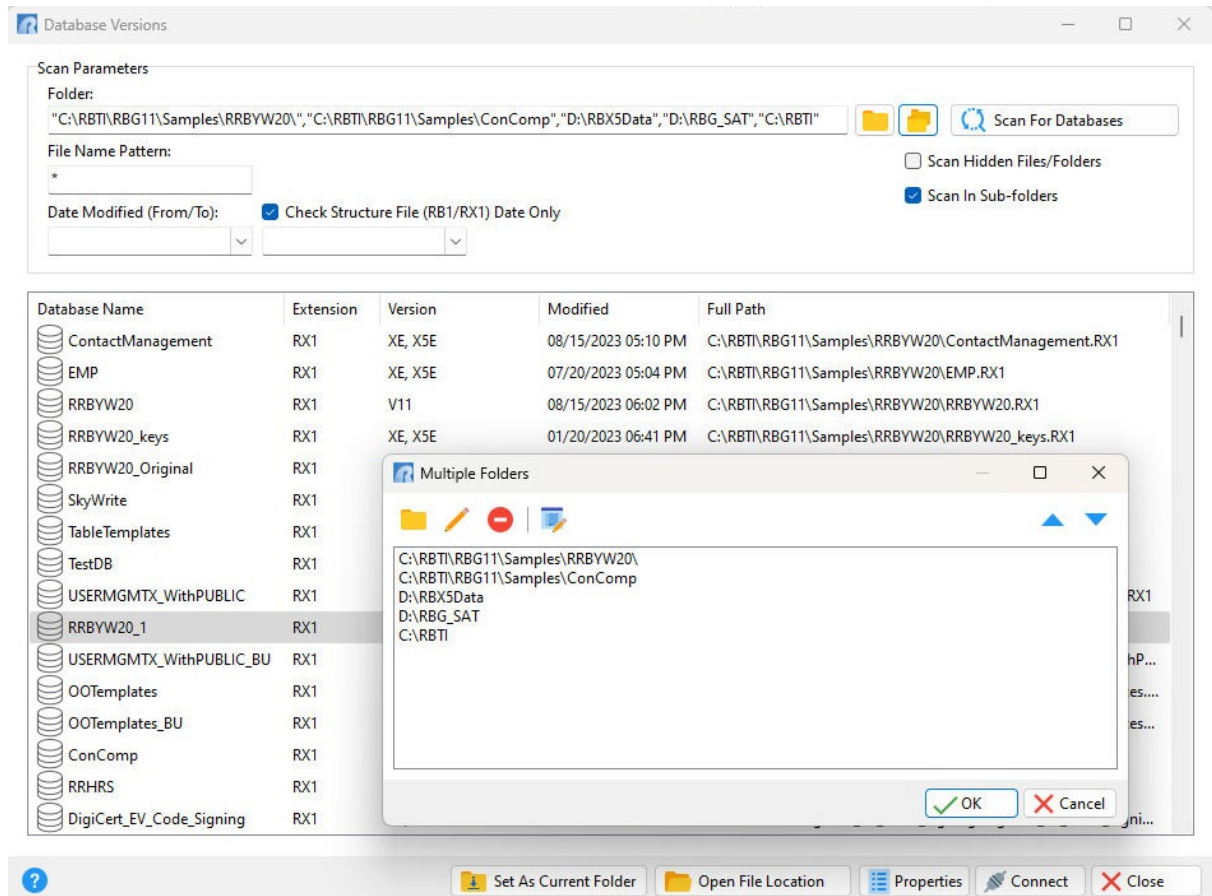


- Enhanced Find in Files utility supporting multiple folder searches (including multiple drive letters)



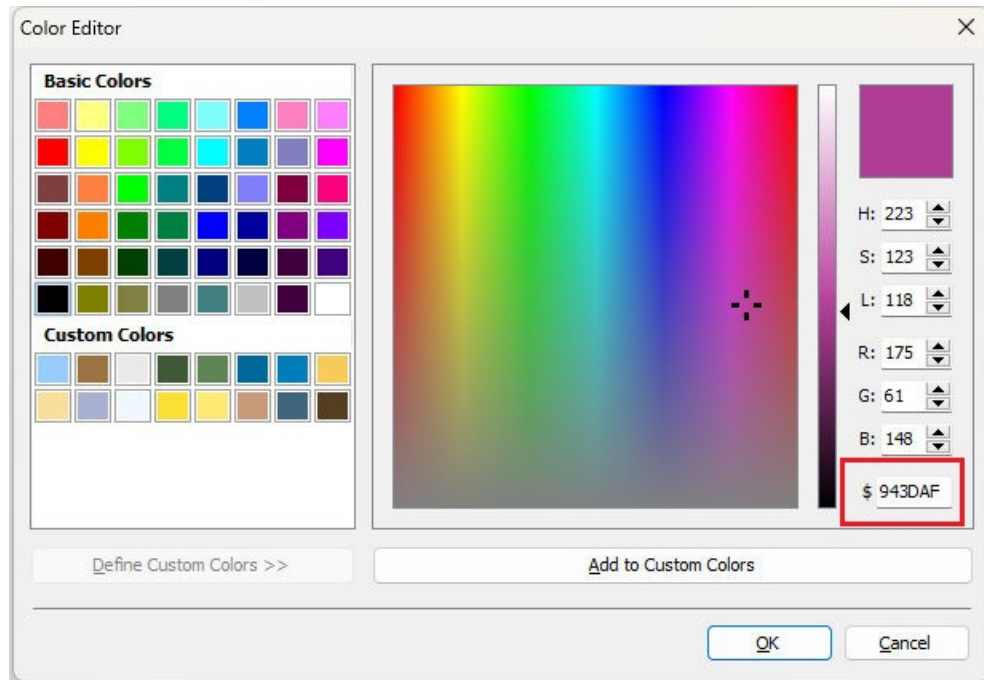
- Added ability to capture the Find in Files utility search results, where the file names can be copied, and also the file names, date/time modified value, and file size

- Enhanced Database Versions utility supporting multiple folder searches (including multiple drive letters)



- Enhanced Database Versions utility display with results matching the Hidden File and/or Hidden Folder criterion
- New TJOURNAL setting to optionally generate a transaction processing journal file to track database changes associated with each COMMIT or ROLLBACK.

- Added ability to switch between Delphi or HTML RGB Hex notation for Custom Colors. The default is Delphi notation. In Delphi mode, the Color Editor will appear as "\$ [.....]" in the bottom right corner. In HTML mode, the Color Editor will appear as "# [.....]".



## 2 Commands

The following enhancements have been made to the R:BASE 11 command syntax:

- Added **EXCEPT** clause for the **SELECT ALL** command, to exclude a subset of columns from a query

```
SELECT ALL FROM Customer EXCEPT CustURL, CustEMail
```

- New **RESET** command to retain the date/time for tables and views when generating structure information with the UNLOAD command. The UNLOAD will create the REST code, so that the rebuilt table and view assigns the original value.

```
RESET SalesDataByCompany LAST_MOD TO '01/01/2022 08:00'
```

- Enhanced **LIST** command which displays the last data modification date/time stamp, and the last schema modification date/time stamp, and comment for the connected database

```
Database Comment: Running R:BASE Your Way 20
Last database modification: 08/07/2023 09:42 AM
Last schema modification: 08/07/2023 09:37 AM
```

- New **SET STATICVAR** command to define static variables, which are part of a connected database

```
SET STATICVAR vCompanyName TEXT = CompanyName IN LicenseInformation WHERE
LicenseNumber = 'BM-68215'
```

- Enhanced **DIR** command to support sort ordering with ASC and DESC parameters

```
DIR *.RX1 DESC
```

- Enhanced **PROJECT** command with **EXCEPT** parameter support to specify columns that will not be included in the projected table

```
PROJECT TEMPORARY CustDetail FROM Customer USING * EXCEPT CustFax
```

- Support for local variables within MDI forms with **SET VARIABLE MDI**

```
SET VARIABLE MDI vCounter INTEGER = 0
```

- Added **CREATE INDEX** support for NOT NULL (partial) indexes, where the index is populated with references to rows where the column value is not NULL. NULL values are not added to the index.

```
CREATE NOT NULL INDEX CustDeactive ON Customer (CustDeactiveDate DESC)
```

- Enhanced **LIST VIEWS** which shows the tables/views that are used in each view

```
LIST VIEWS
```

Name	Columns	Rows	Comments
CustomerContact	8	N/A	Customers and Contacts
Tables:Customer,Contact			
SalesByEmployee	6	N/A	Products Sold by Employee
Tables:Employee,InvoiceHeader			
SalesDataByCompany	9	N/A	Sales Data by Company
Tables:InvoiceHeader,Customer			
StaffByDept	11	N/A	Staff by Department
Tables:Staff,Departments			

- Enhanced **COMMENT ON** command to specify a comment for the connected database

```
COMMENT ON DATABASE IS 'User and Contact Management System'
```

- New **EXPLAIN** command which outputs the optimizer selections for the specified query

```
EXPLAIN SELECT ALL FROM Customer WHERE CustState = 'WA'
```

- Enhanced **BROWSE** and **EDIT** commands with **EXCEPT** parameter support to specify columns that will not be included in the Data Browser

```
BROWSE ALL FROM Contact EXCEPT ContInfo, ContPhoto
```

- Enhanced **PRINT... OPTION SCREEN** with additional parameters to disable the Find Text and Report Outline buttons, just like other enabled/disable buttons parameters

```
PRINT Invoice WHERE TransID = 1002 OPTION SCREEN|BTNFIND_VISIBLE FALSE|
BTNOUTLINE_VISIBLE FALSE
```

- Enhanced **GRANT** user privileges allowing CREATE privileges on TEMPORARY TABLES to be separate from CREATE privileges on permanent tables

```
GRANT TEMPORARY CREATE TO Noah
```

- Enhanced **LIST** command to display QualKey columns

```
LIST COLUMN QUALKEYS
```

- New **DBCONN** command which displays all applications (application, path, and file name) with connections to the connected database

- Enhanced **UNLOAD DATA** command to specify custom quote and delimiter character values for ASCII/CSV formats

```
UNLOAD DATA FOR InvoiceHeader AS CSV DELIMIT=|
```

- Enhanced **LIST** command which includes the number of views, stored procedures, forms, reports, and labels

```
Number of Tables in Database RRBYW20 is 56.
Number of Columns in Database RRBYW20 is 388.
Number of Indexes in Database RRBYW20 is 62.
Number of Views in Database RRBYW20 is 29.
Number of Stored Procedures in Database RRBYW20 is 2.
Number of Forms in Database RRBYW20 is 96.
Number of Reports in Database RRBYW20 is 58.
Number of Labels in Database RRBYW20 is 10.
```

- Enhanced **SHOW VARIABLE** command which supports wildcard characters for the variable name, even when the =w parameter is present

```
SHOW VARIABLE vCust%=10 ASC
```

- Enhanced **DEBUG** setting variable debugging feature where a warning will display if a SET VAR <NAME> <TYPE> declaration is executed when the variable already exists and the variable type changes. The warning will only appear if DEBUG is set ON. The feature is helpful to avoid accidentally clearing a variable when it is used elsewhere, especially in heavily nested code.



- Added ROWS\_PER\_FILE parameter for the **GATEWAY** exports where the records may be broken up into separate files based on the quantity of records in each file. The supported export formats include: XLS, XLSW, SLK, DIF, WK1, WQ1, LDIF, JSON, and ODT.

```
GATEWAY EXPORT JSON Employee.JSON +
SELECT * FROM Employee WHERE ActivEmp = 'A' +
OPTION SHOW_PROGRESS ON +
|ROWS_PER_FILE 5
```

- Enhanced **GATEWAY EXPORT** formula detection support for Excel formats to dismiss equal characters that exist in table values, which are not actual formulas. The default is ON.

```
GATEWAY EXPORT XLS DataCalculation.XLS +
SELECT * FROM DataRates +
OPTION COL_NAMES ON |DETECT_FORMULA OFF
```

- Enhanced **ExtForm plugin** to include a SET\_VERSION\_NUMBER parameter, where the version number for an external form can be adjusted/reset

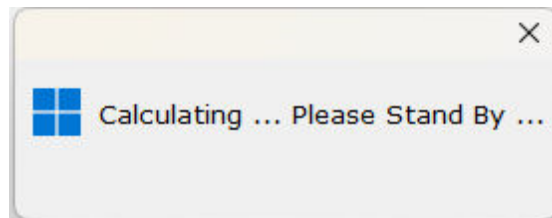
```
PLUGIN EXTFORM vResult|FILE TileMenu.rff +
|ACTION SET_VERSION_NUMBER|VERSION 101
```

- Enhanced **FEEDBACK** setting where **AUTONUM** is added to the list of command which will show feedback
- Enhanced **GATEWAY IMPORT** support for the XML format to flatten the structure and process attribute options for improved loading of data nodes

```
GATEWAY IMPORT XML ShipmentLoad.XML REPLACE Shipments +
OPTION NODE_PATH \FILE +
|PROCESS_ATTRIBUTES ON +
|FLATTEN_STRUCTURE ON
```

- Enhanced **DIALOG** and **PAUSE** commands where the WINDOWS icon image will vary based upon the operating system

```
PAUSE 3 USING 'Calculating ... Please Stand By ...' +
CAPTION ' ' ICON WINDOWS +
OPTION MESSAGE_FONT_NAME VERDANA +
|MESSAGE_FONT_SIZE 10 +
|MESSAGE_FONT_COLOR BLACK
```



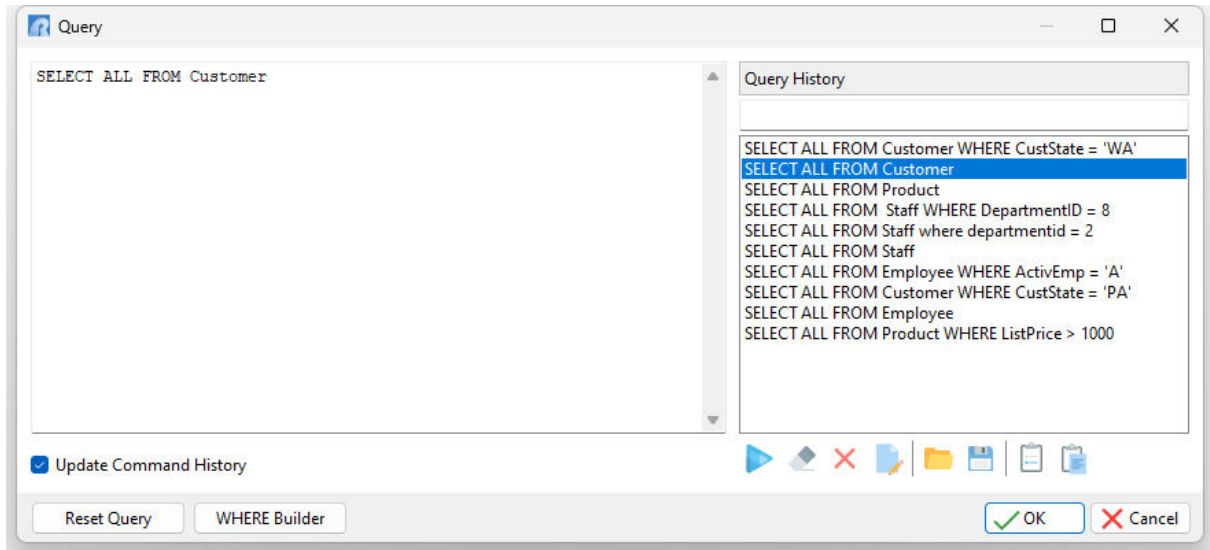
- When using the Character Case property in form Edit/Memo controls, the Title Case option does not capitalize the second value in a hyphenated string. An application PROPERTY was implemented to alter the behavior of Title casing, where the first letter in the second value of a hyphenated string is made upper case. The default value is OFF.

```
PROPERTY APPLICATION HYPHEN_AS_WORD_SEPARATOR ON
```

### 3 Data Browser/Editor

Allowing for manageable data review and modification, the following features have been enhanced within the R:BASE 11 Data Browser:

- Enhanced Update Query utility with a Query History to retain table queries



- Added .xlsx file extension option for exports to Spreadsheets, similar to what is currently offered for Workbooks

## 4 Database Explorer

As the main dashboard, the R:BASE 11 Database Explorer has been enhanced with the following features:

- New Find in list Filter to search for items within the work space



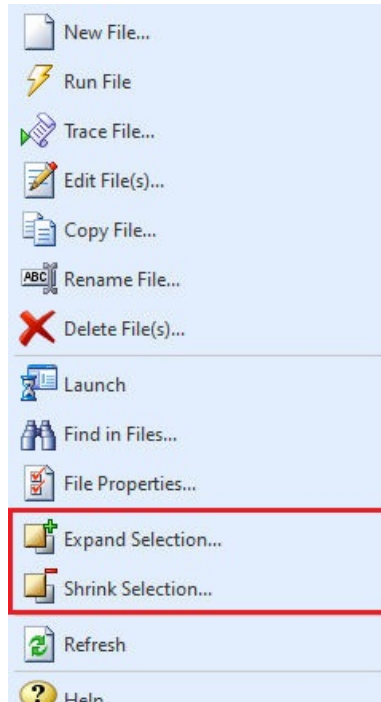
- Added column for Views, listing the table/view source that each view is comprised of

View Name ^	Tables	Comment
2. CustomerList	Customer	View - Customer List
3. CustomerView	Customer	Sorted List of Customers
4. EmpNetAmount	Employee, InvoiceHeader	
5. FullOuterJoin	Customer, Employee	Sample Full Outer Join V
6. InvoicesMaster	InvoiceHeader, InvoiceDetail, Product, Employee	Invoice Master
7. LeftOuterJoin	InvoiceHeader, InvoiceDetail	Sample Left Outer Join V
8. ListOfReportsView	SYS_REPORTS3	List of Reports to be Sho
9. NewContact	Contact	Quick List of Customer C
10. NewCustomer	Customer	Test View for Sub-Report
11. NewEmployee	Employee	Test View for Sub-Report
12. NewInvoiceDetails	InvoiceDetail, Product	Test View for Sub-Report
13. NewInvoiceHeader	InvoiceHeader	Test View for Sub-Report
14. OrganizationView	Staff, Departments, StaffByDept	Organization View
15. ProdAlias	InvoiceHeader, InvoiceDetail, Customer, Employee, Product	Products Sold by Date -
16. ProductInvoice	InvoiceHeader, InvoiceDetail, Customer, Product, Contact	Product Invoice View
17. ProdView	InvoiceHeader, InvoiceDetail, Customer, Employee, Product	Sales by Products - View

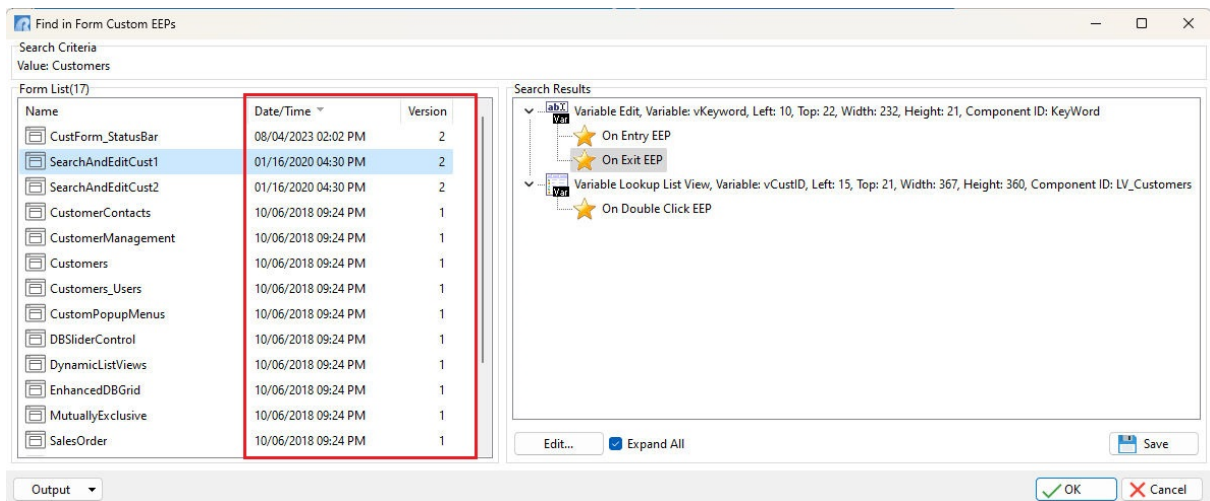
- Added display for the current INSERT/OVERWRITE status in the R:BASE status bar



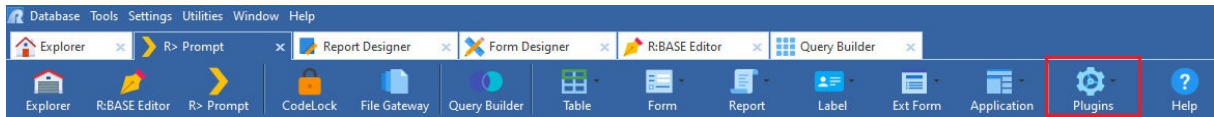
- Added "Expand Selection" and "Shrink Selection" menu options to the Command Files group, where a custom file mask (file name and/or extension) can be specified to include or limit what files are selected



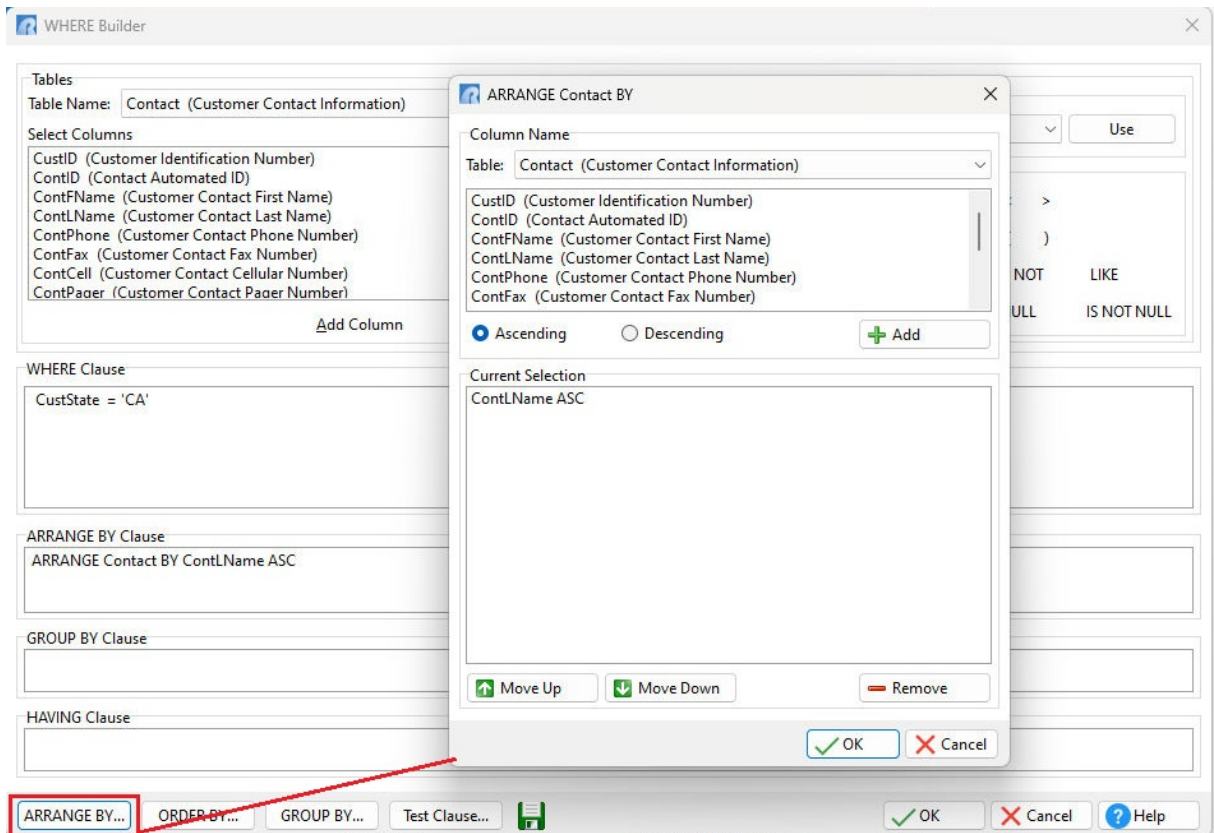
- Enhanced results when searching for text in EEPs, object properties, and expressions, where the date and time stamp and version are displayed next to the object name



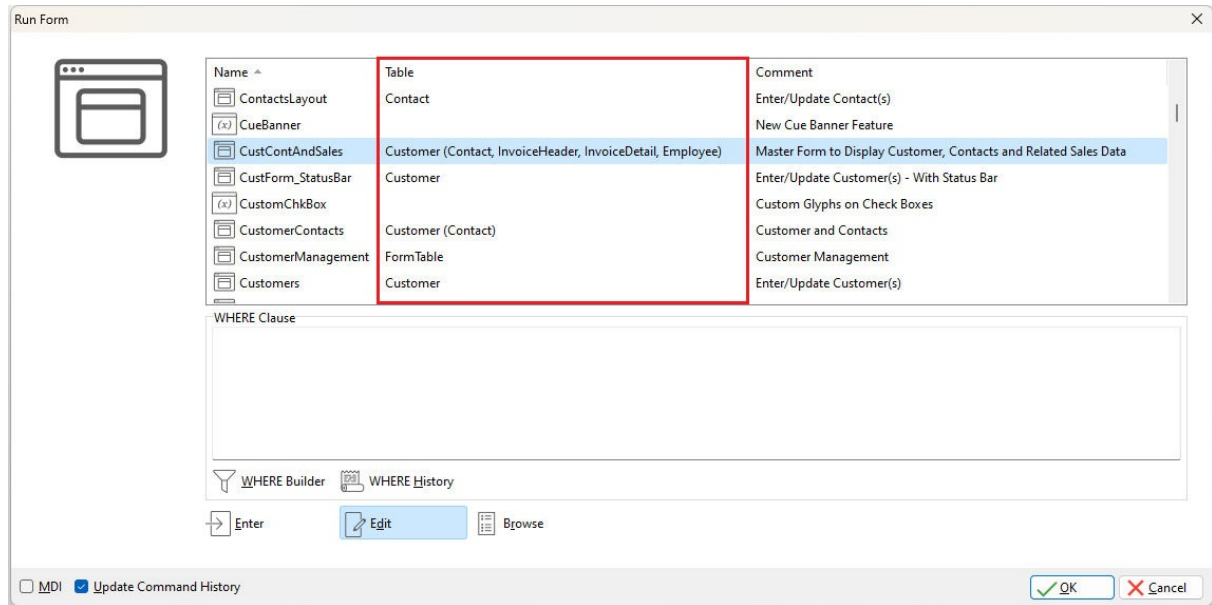
- Added Plugins button to the main toolbar



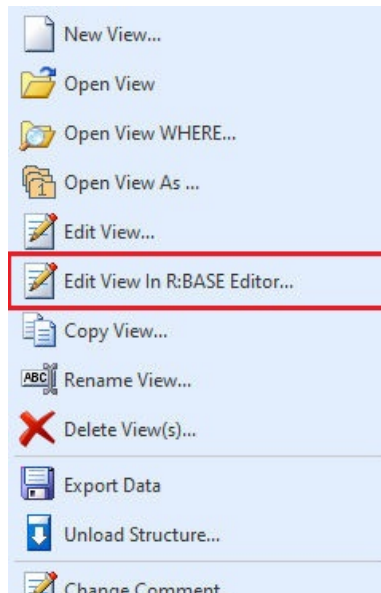
- Enhanced WHERE Builder when running a form or printing a report/label which contains slave tables, where "ARRANGE TableName BY ColumnName" parameters can be specified. After a slave table is selected from the table list in the WHERE Builder, the "ARRANGE BY" button is enabled to define the column(s) to arrange the slave table data.



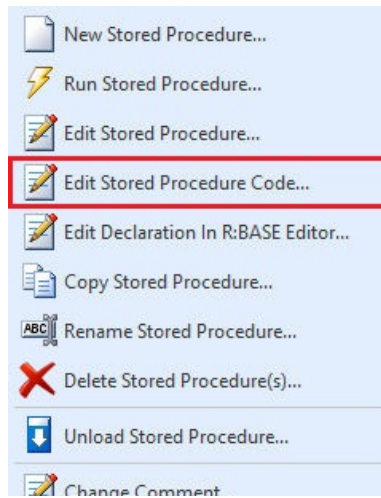
- Added display of slave tables when selecting to run a form or print a report/label from the main toolbar



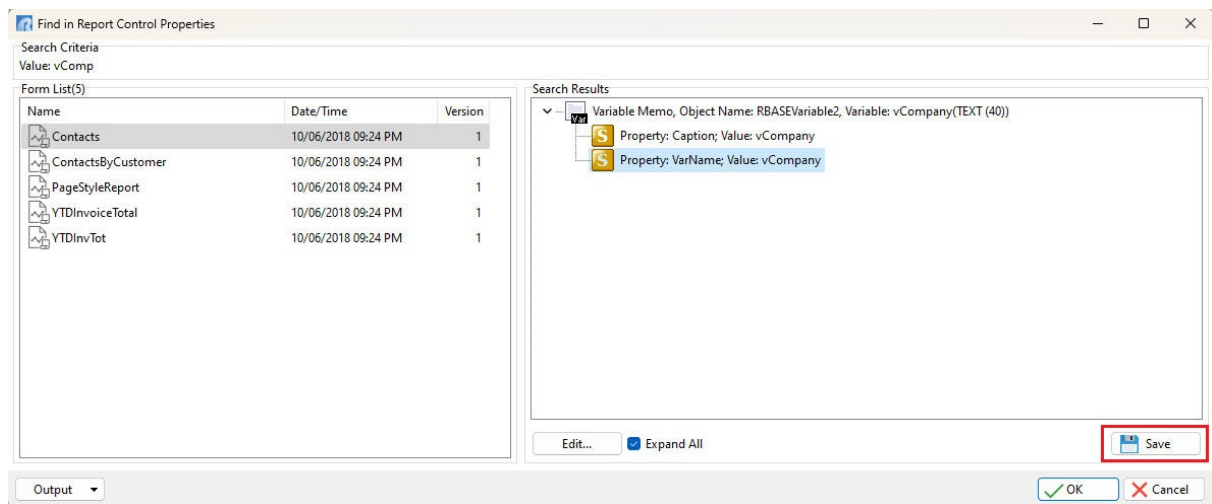
- Added support to edit a view in R:BASE Editor from the Database Explorer, where a tab opens in R:BASE Editor for any changes to be implemented by running the .vie command file



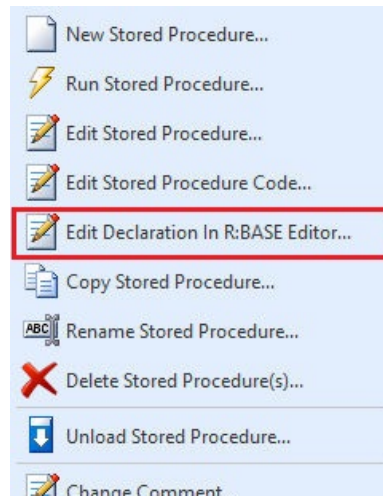
- Support to directly edit a stored procedure's code from the Database Explorer



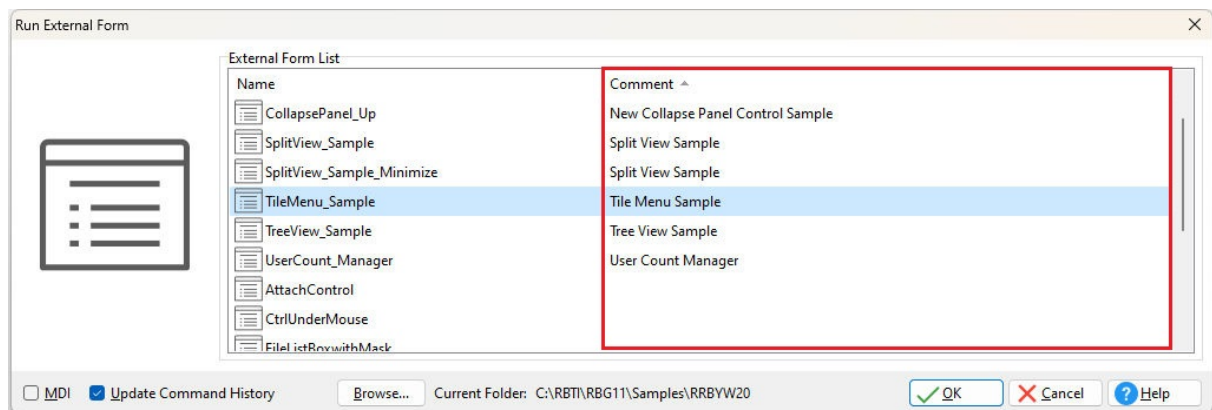
- Added "Save" button when searching for text in EEPs, object properties, and expressions, where each module may be saved individually



- Added support to edit a stored procedure declaration in R:BASE Editor, with the source in a .PRO file and the declaration to a .RMD file

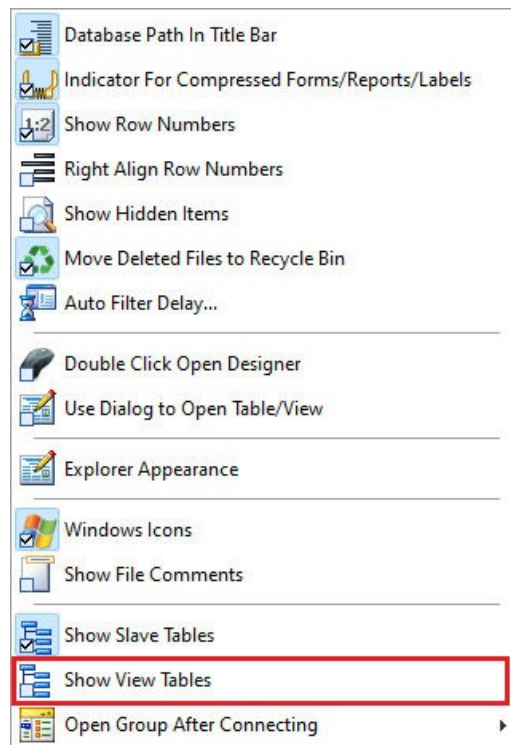


- Added display of comments when running an external form from the main toolbar when no external form is selected

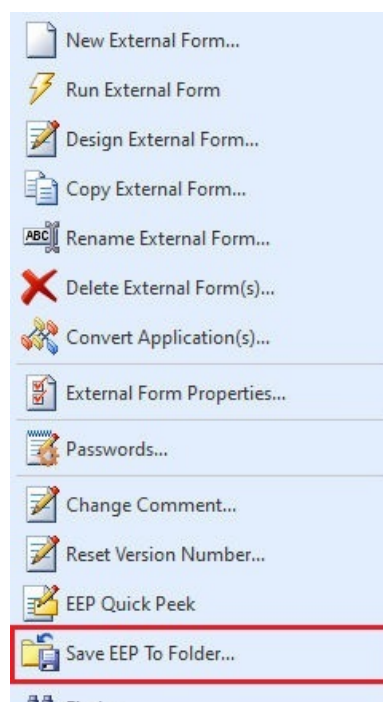




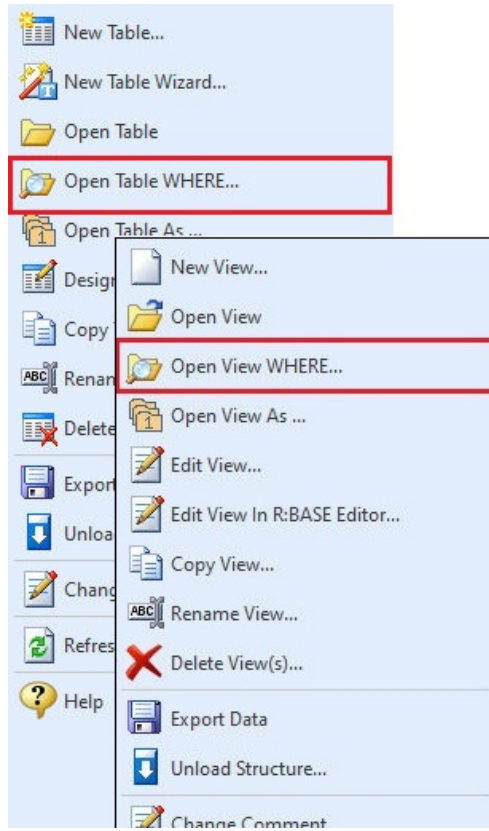
- Added setting to toggle the display of tables/views for the Views area. When enabled, the setting can slow down response times when many/complicated views are present.



- Added "Save EEP To Folder" menu option for Forms, Reports, Labels. and External Forms where the EEP code for the selected objects may be saved to a folder



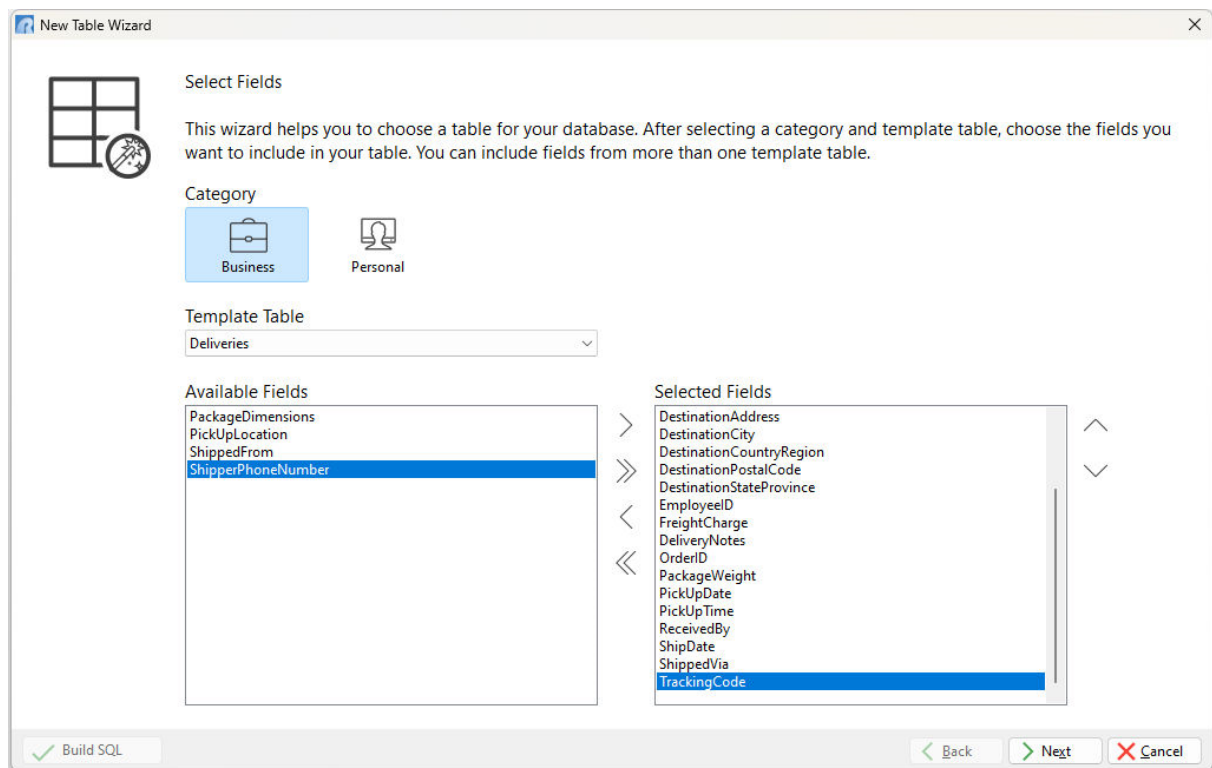
- New "Open Table WHERE..." and "Open View WHERE..." options added to the group bar



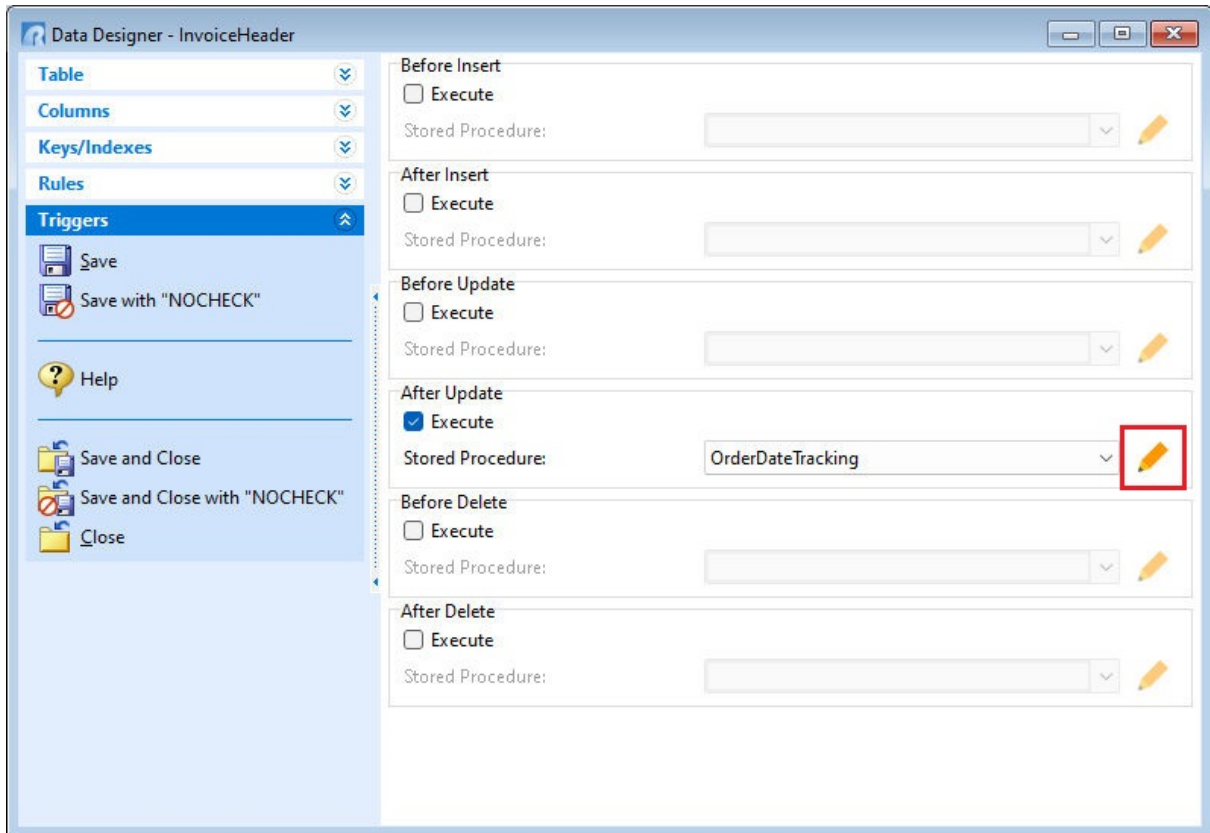
## 5 Data Designer

The R:BASE 11 Data Designer allows for table design to be easy and efficient. The newest features include:

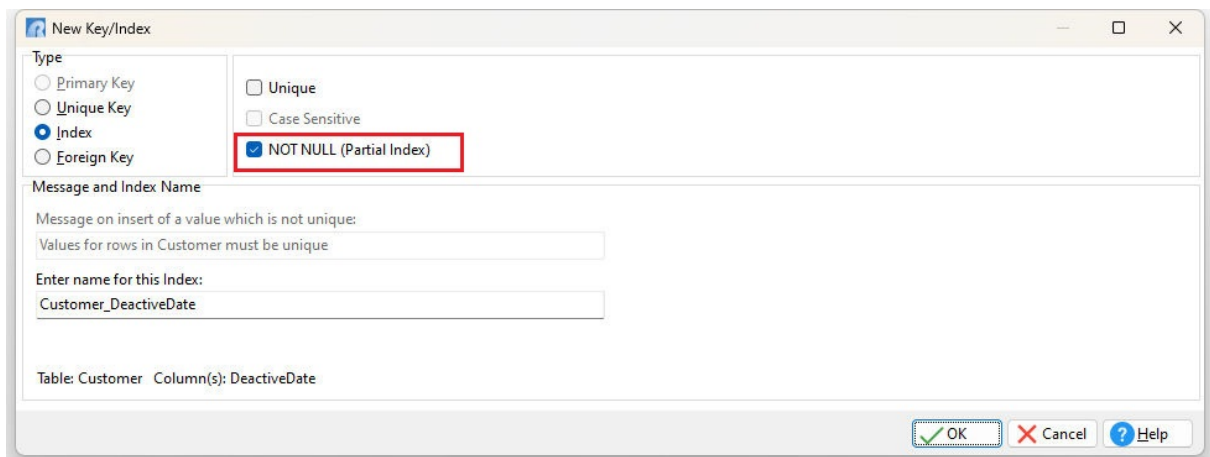
- New Table Wizard
  - 32 available templates (Business/Personal)
  - Custom column definition (data type, not NULL) and ordering
  - Primary key definition (single/multiple fields), auto incrementing value
  - Table comment/description
  - Available SQL syntax



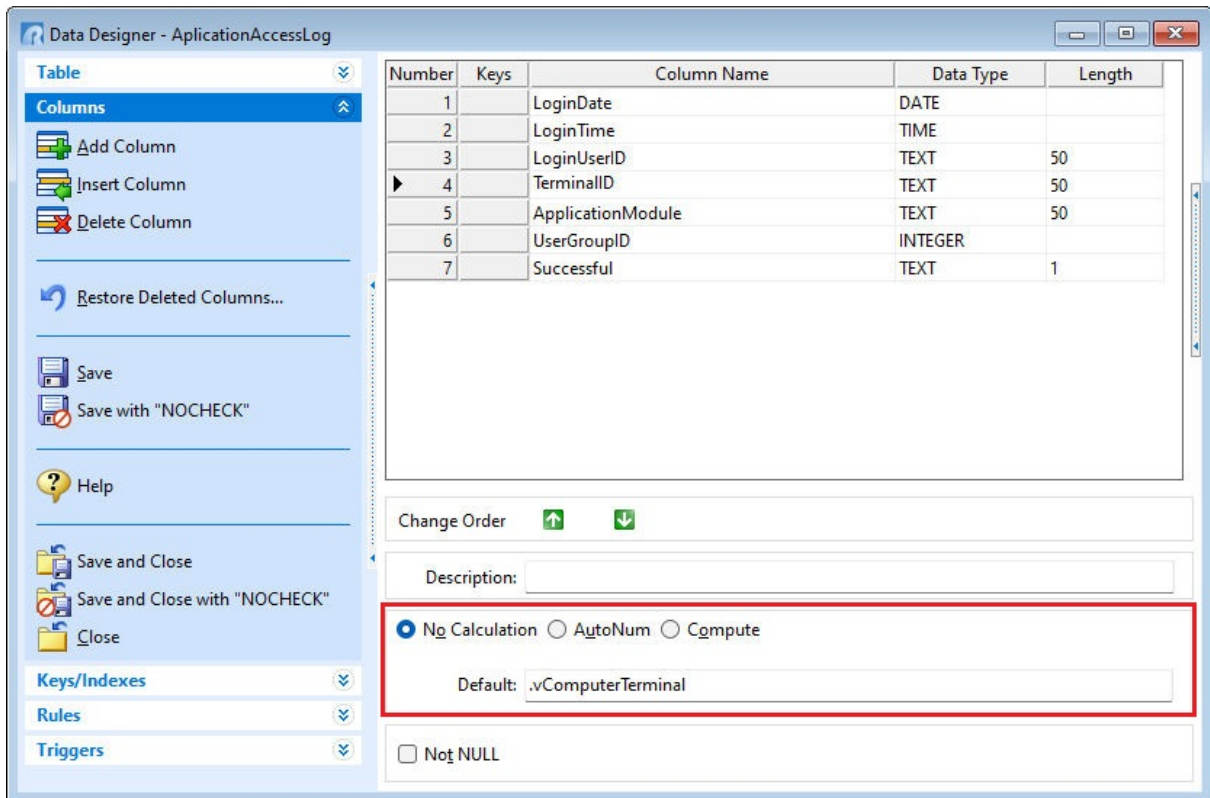
- Added support to directly edit stored procedure code from the Triggers area



- New menu options to create NOT Null Index definitions



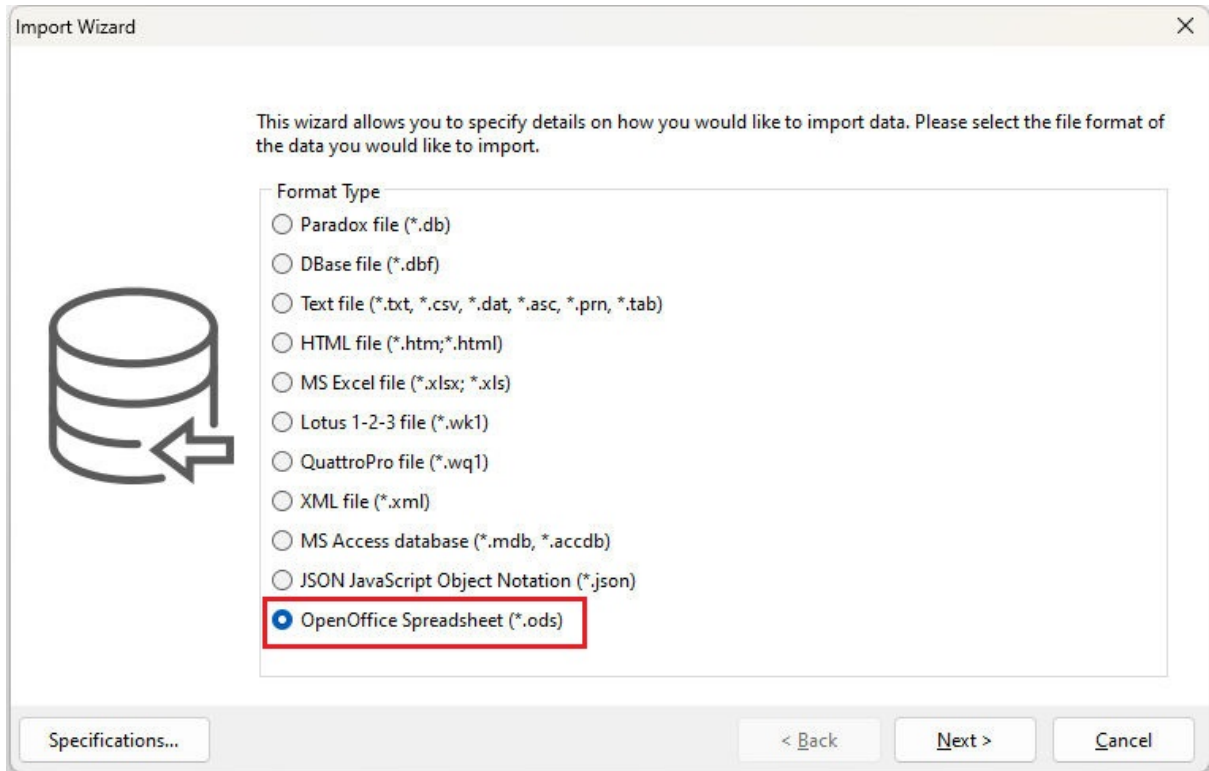
- Enhanced default column value capabilities, where static and global variable can be used (value must be dotted) , which works well in combination with static variables



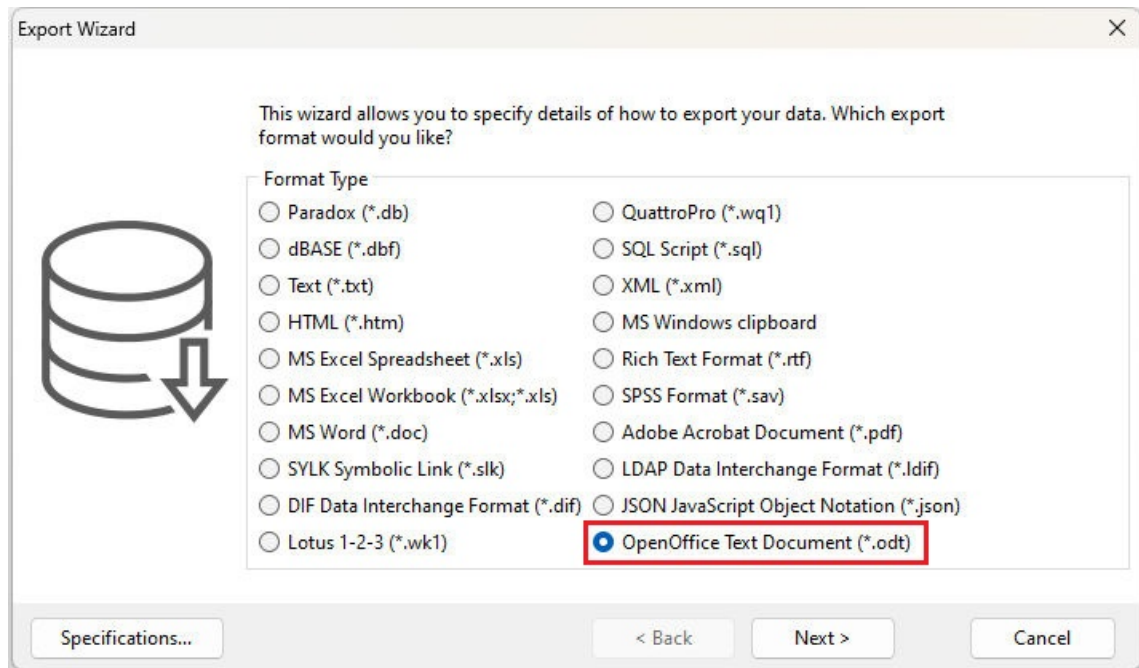
## 6 File Gateway

The File Gateway utility contains many powerful features to allow the importing and exporting of data. New features include:

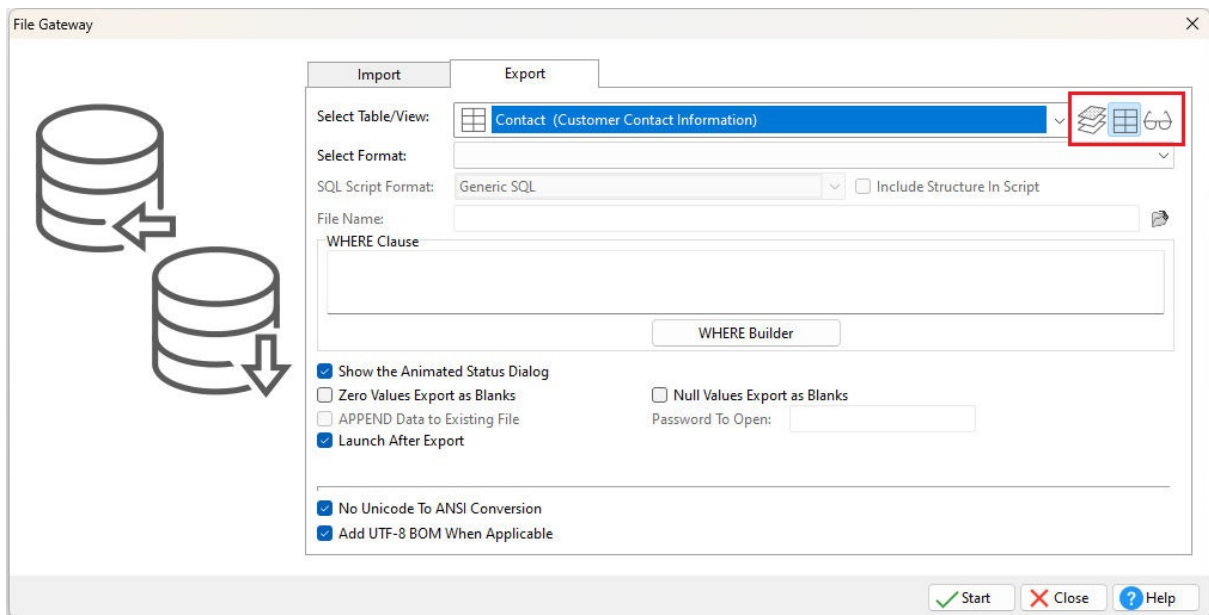
- Added support to import OpenOffice spreadsheet (.ods) files



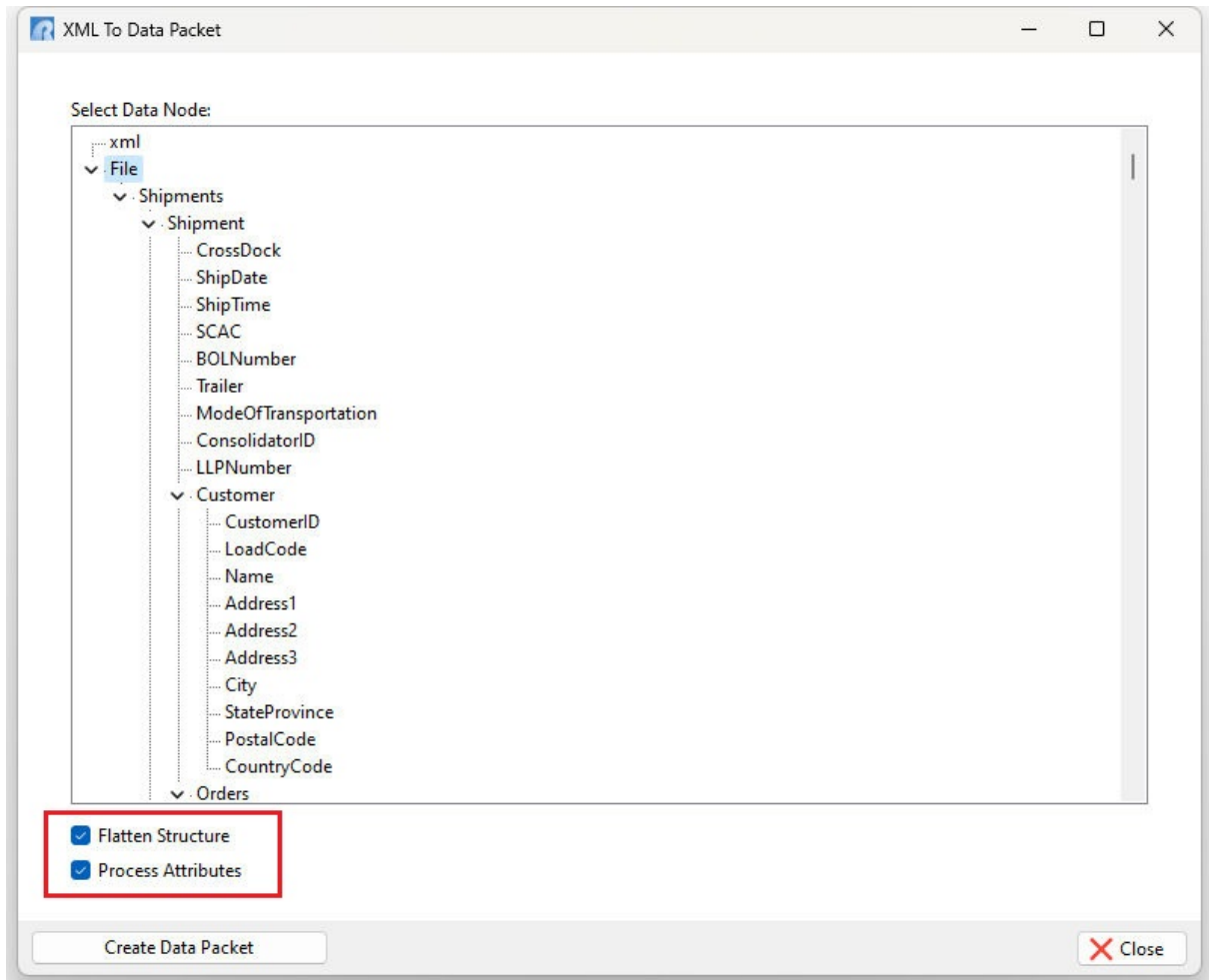
- Added support to export data to OpenOffice Text Document (.odt) files



- Enhanced Export tab, where the Tables/Views combo box can be limited to tables, views, or both



- Enhanced XML import support to flatten the structure and process attribute options for improved loading of data nodes

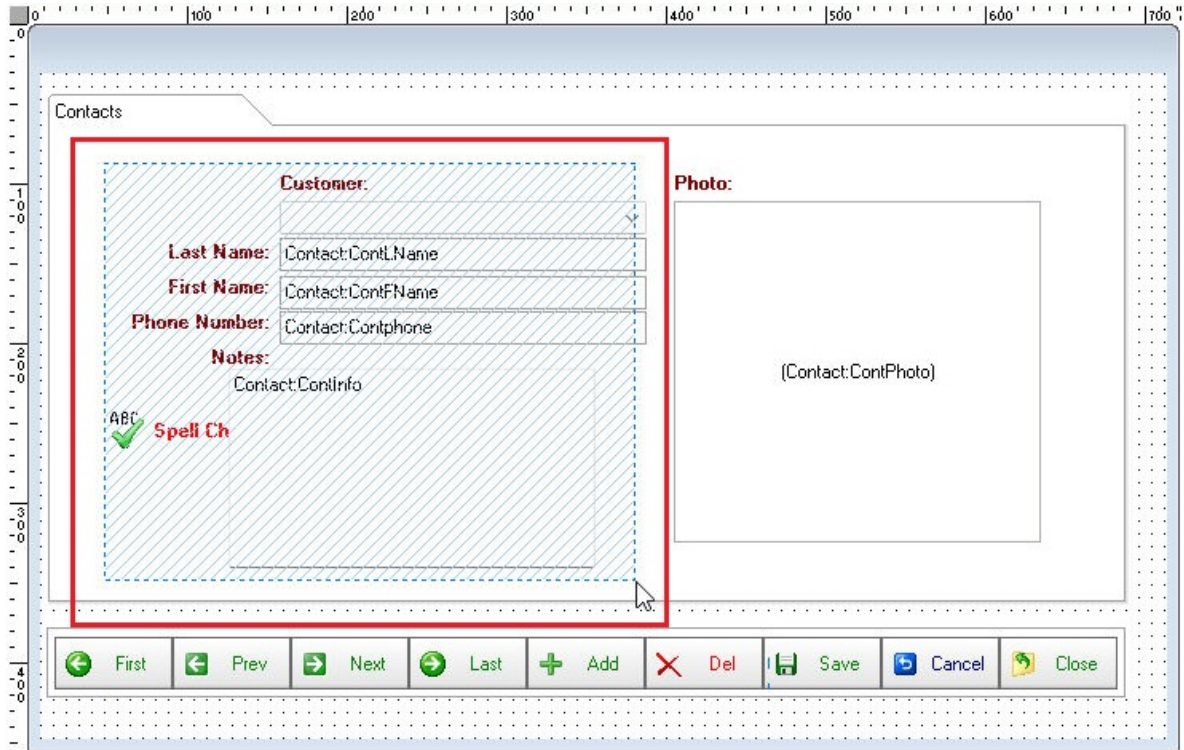




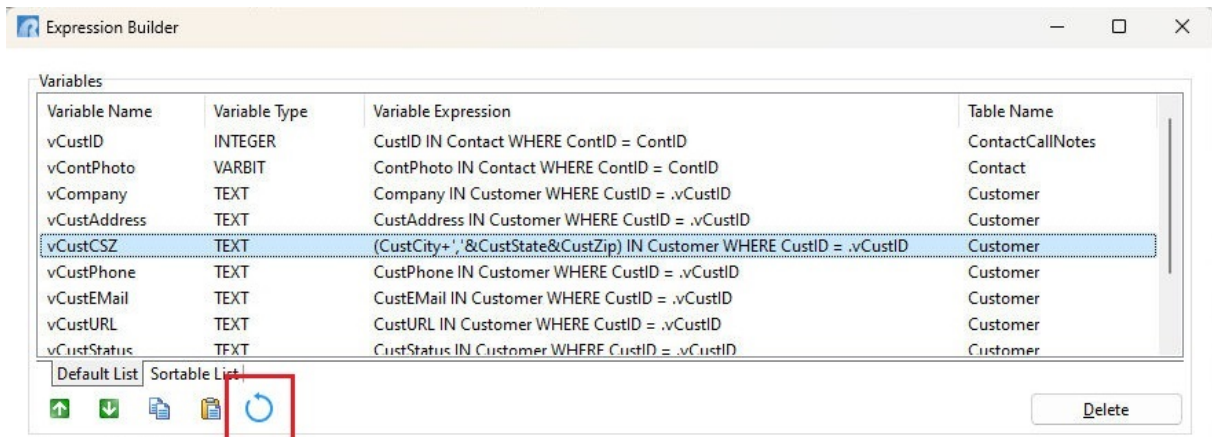
## 7 Forms

The R:BASE 11 Form Designer has been enhanced to provide more powerful data-driven form controls for increased productivity!

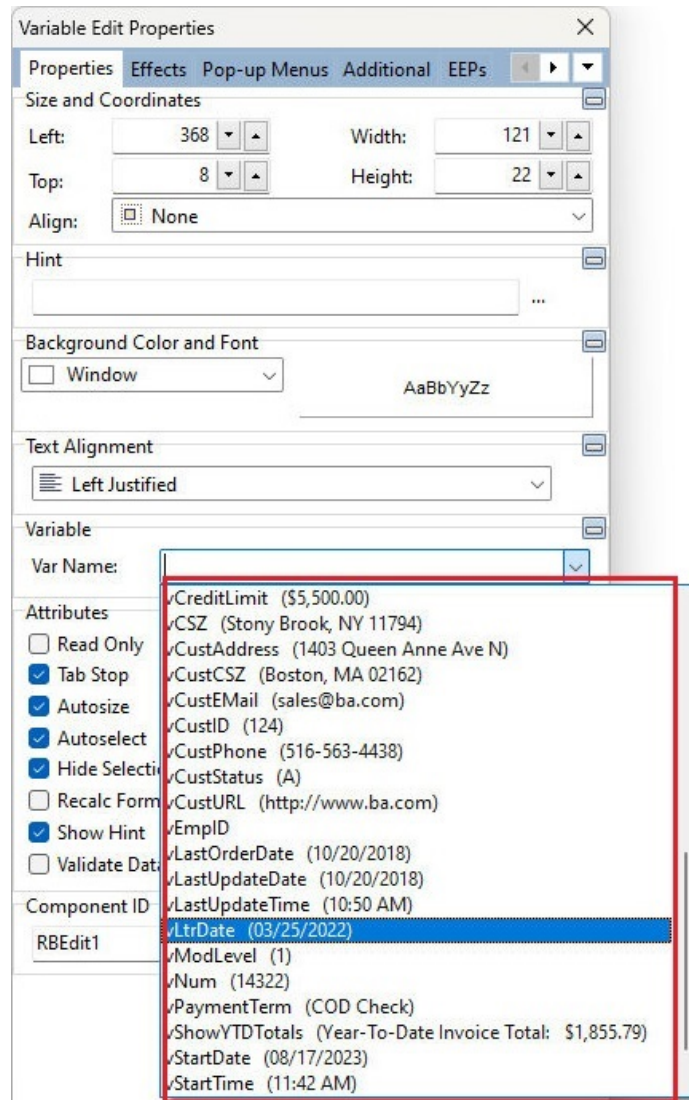
- Enhanced lasso frame for highlighting and selecting multiple objects easier



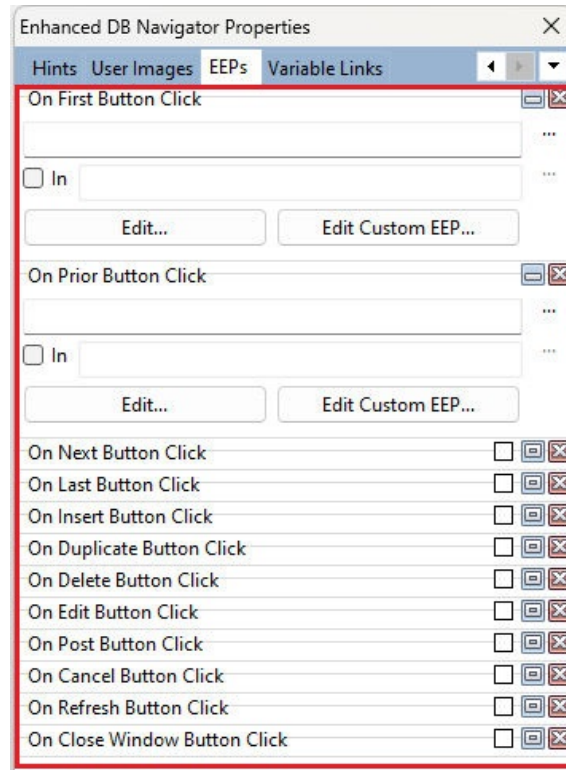
- Added ability to roll back unwanted changes to variable definitions (one variable at a time) in the Expression Builder



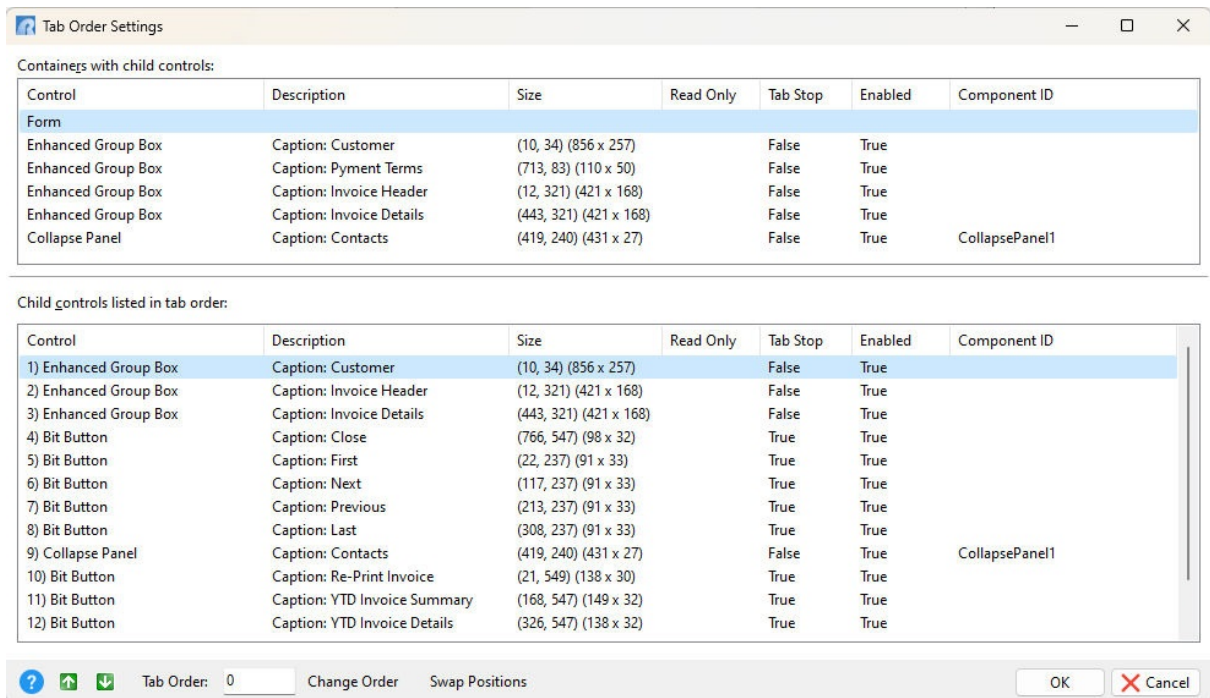
- Enhanced display of variable values within property editors and other areas for variable based controls, to help differentiate between variables



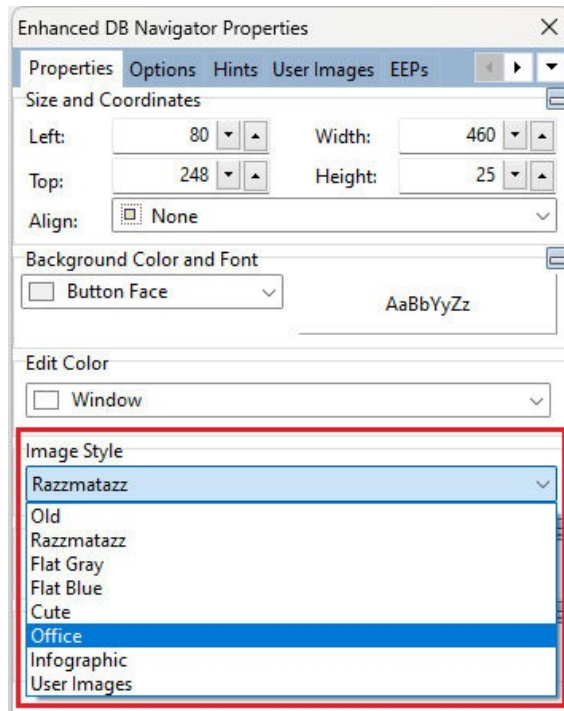
- Added ability to assign an EEP or command file to an Enhanced DB Navigator button



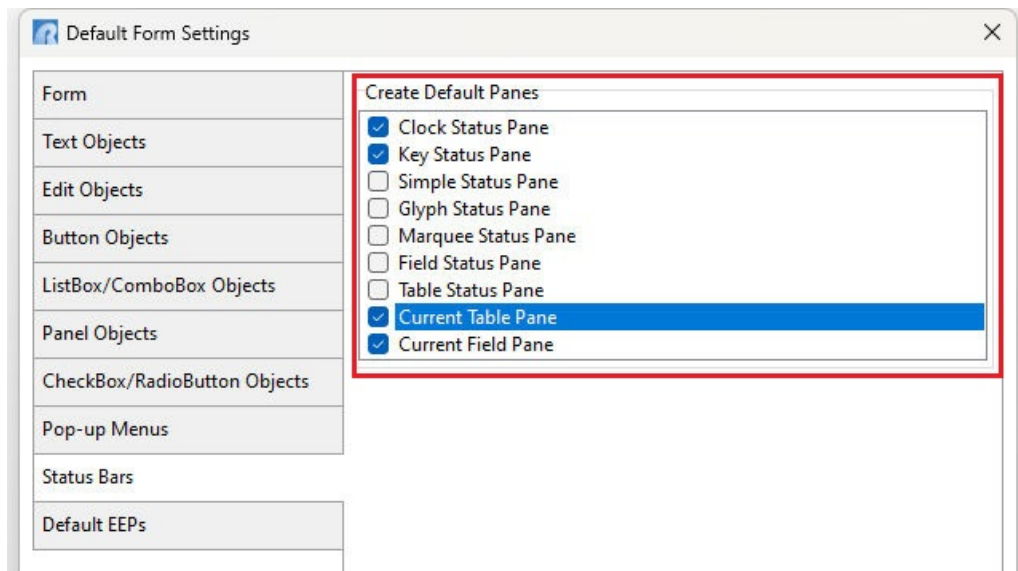
- Improved Tab Order settings window in tabular format



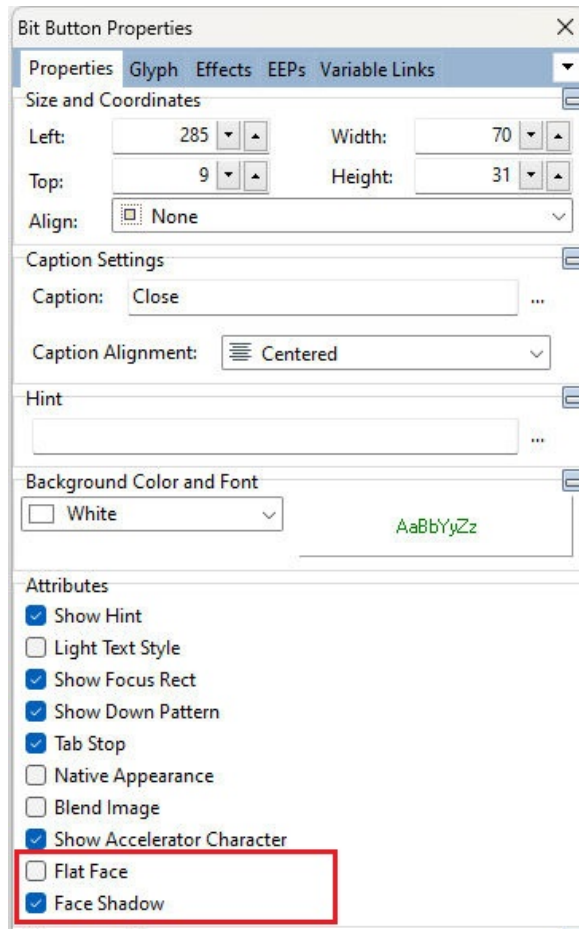
- New Enhanced DB Navigator "Image Style" sets (Flat Gray, Flat Blue, Cute, Office, and Infographic) for use with new operating systems



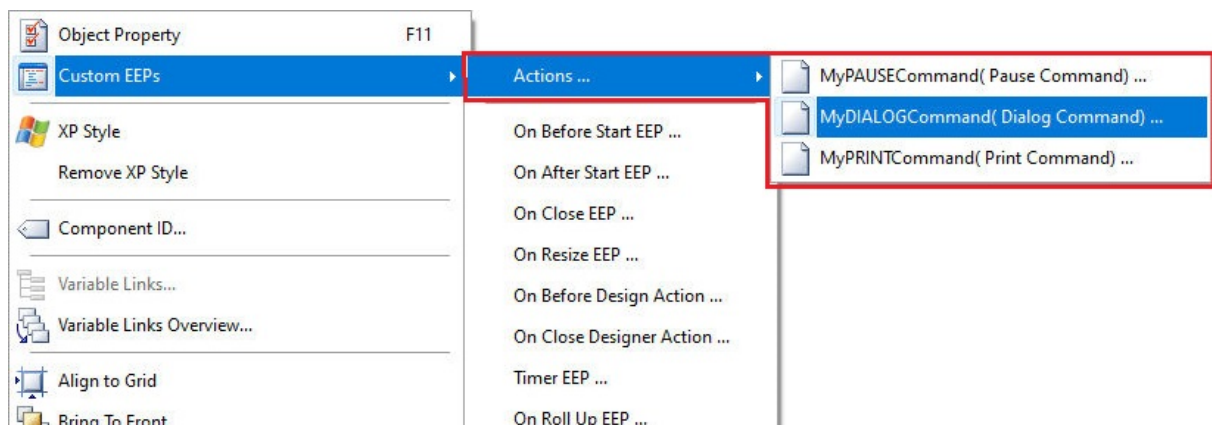
- New Default Form Settings tab to assign the default panes for Status Bar controls



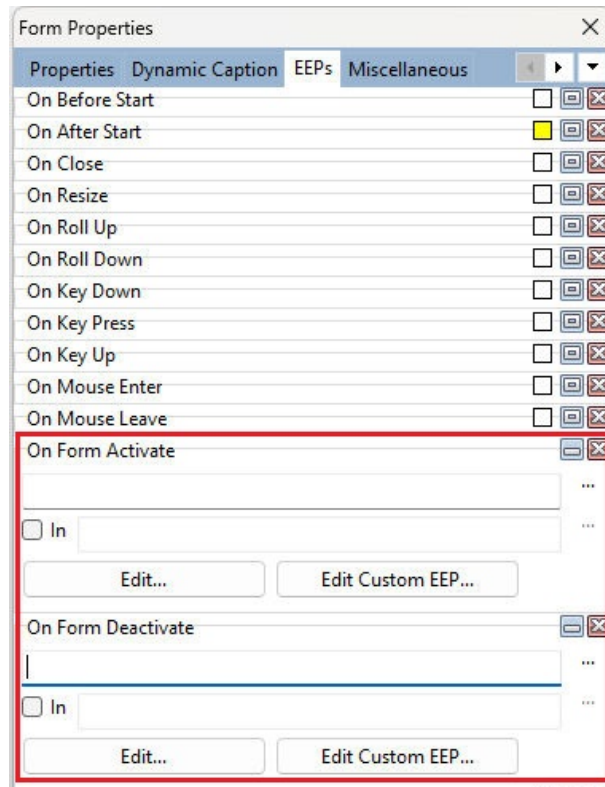
- Enhanced Bit Button and Push Button objects with Flat Face and Flat Shadow properties, for improved display in forms with backgrounds using darker colors



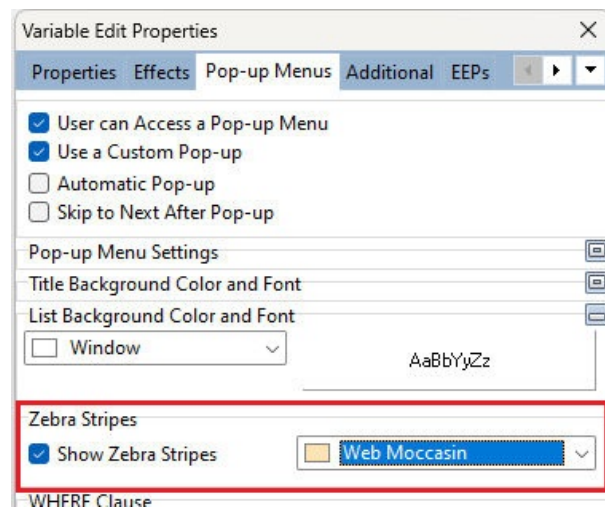
- Enhanced right click context menu for the Custom Form Actions, Static Text, Image, Drop-Down Menu Button, Tree View, Group Bar, List View, Split View, and Tile Menu objects to include the underlying Custom EEP options



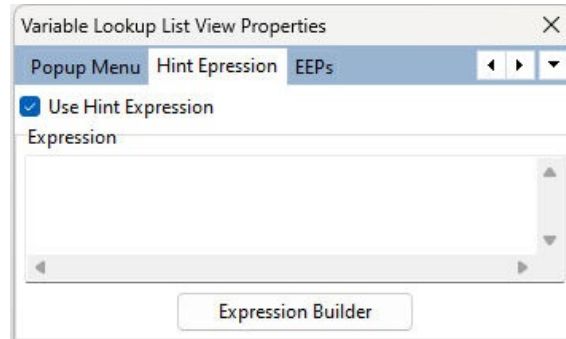
- Added "On Form Activate" and "On Form Deactivate" EEPs, which fire when the form receives focus, and when focus is moved to another form



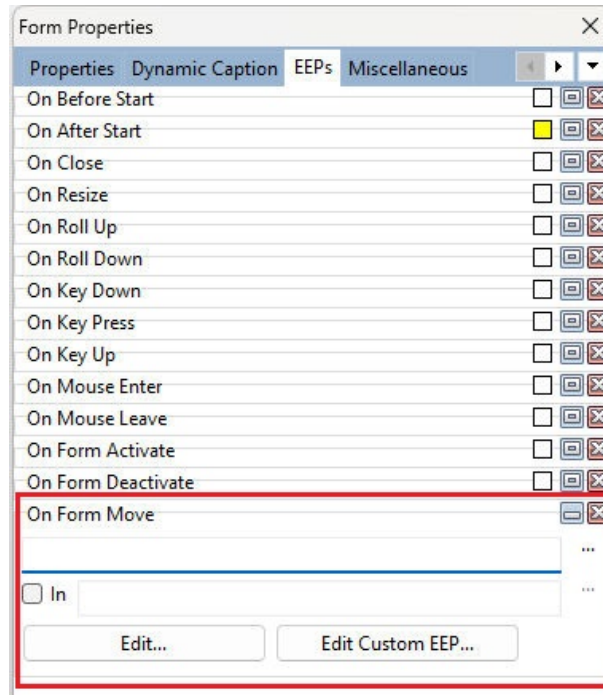
- Enhanced display for Pop-up Menus where zebra stripes can be enabled. The feature is supported the DB Edit, DB Memo, Variable Edit, Variable Memo, Enhanced DB Grid, DB Tree Grid, and DB Grid controls.



- Added Hint Expressions to List View and List Box controls to display a hint for the current mouse hovered row, based on a lookup from another table. The List View controls include the List View, Variable Lookup List View, and DB Lookup List View. List Box controls include the Variable Lookup List Box, Variable User Defined List Box, DB Lookup List Box, and DB User Defined List Box.



- Added "On Form Move" EEP, which fires when the form is moved



- Added right click menu on the Tab Order listed items to allow quick editing of attributes or to show the property editor

Child controls listed in tab order:

Control	Description	Size	Read
1) DB Edit	Table: Customer, Field: Company	(497, 14) (189 x 21)	False
2) DB Edit	Table: Customer, Field: CustAddr...	(497, 36) (189 x 21)	False
3) Variable Edit	Variable: vCustCSZ	(497, 58) (189 x 21)	True
4) DB Edit	Table: Customer, Field: CustPhone	(497, 123) (189 x 21)	False
5) DB Edit	Table: Customer, Field: CustURL	(497, 80) (189 x 21)	False
6) DB Edit	Table: Customer, Field: CustEMail	(497, 101) (189 x 21)	False
7) DB Edit	Table: Customer, Field: LastUpdat...	(497, 145) (189 x 21)	False
8) DB Edit	Table: Customer, Field: LastOrder...	(497, 167) (189 x 21)	False
9) DB Radio Group	Table: Customer, Field: CustStatus	(713, 15) (110 x 63)	False
10) Enhanced Group Box	Caption: Pymnt Terms	(713, 83) (110 x 50)	False
11) Enhanced Group Box	Caption: Credit Limit	(713, 147) (110 x 50)	False
12) DB Edit	Table: Customer, Field: CreditLimit	(721, 158) (92 x 21)	False
13) DB Grid	Table: Customer	(9, 18) (381 x 163)	False

Read Only  
 Tab Stop  
 Enabled  
 Component ID...  
**Properties...**  
 Filters...

Tab Order:

- Added right click menu on the Tab Order child items to filter the results by Read Only, Tab Stop, Enabled, and Component ID values

Child controls listed in tab order:

Control	Description	Size	Read Only	Tab Stop	Enabled	Component ID
1) DB Edit	Table: Customer, Field: Company	(497, 14) (189 x 21)			True	
2) DB Edit	Table: Customer, Field: CustAddr...	(497, 36) (189 x 21)			True	
3) Variable Edit	Variable: vCustCSZ	(497, 58) (189 x 21)	<input checked="" type="checkbox"/>	<input checked="" type="checkbox"/>	True	
4) DB Edit	Table: Customer, Field: CustPhone	(497, 123) (189 x 21)			True	
5) DB Edit	Table: Customer, Field: CustURL	(497, 80) (189 x 21)			True	
6) DB Edit	Table: Customer, Field: CustEMail	(497, 101) (189 x 21)			True	
7) DB Edit	Table: Customer, Field: LastUpdat...	(497, 145) (189 x 21)			True	
8) DB Edit	Table: Customer, Field: LastOrder...	(497, 167) (189 x 21)			True	
9) DB Radio Group	Table: Customer, Field: CustStatus	(713, 15) (110 x 63)	False	False		
10) Enhanced Group Box	Caption: Pymnt Terms	(713, 83) (110 x 50)				

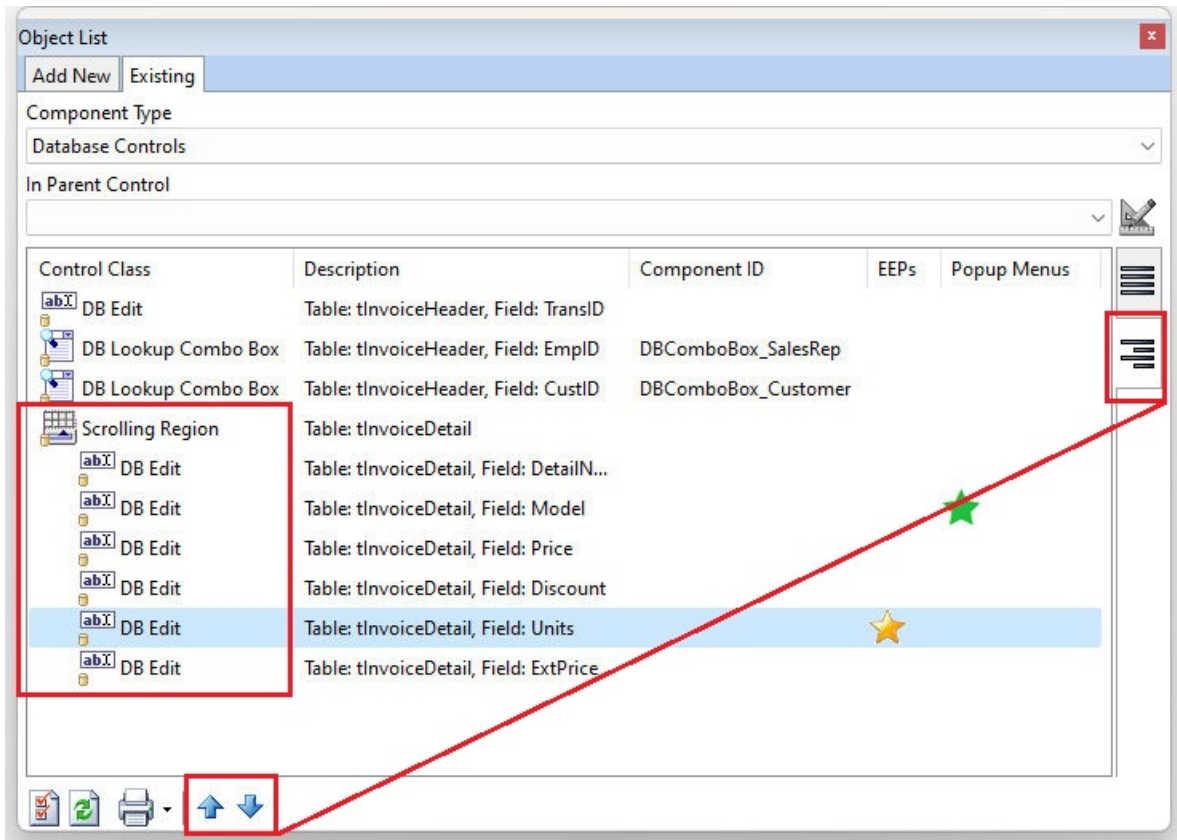
Tab Order:

Filters...
 

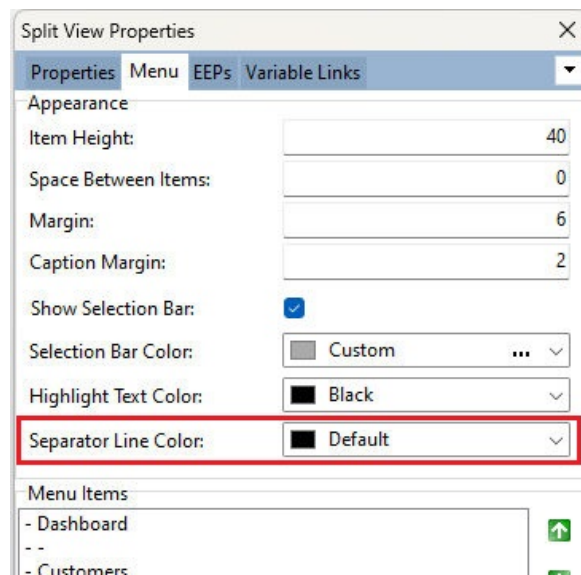
- Read Only
  - Has Read Only Property
  - True
  - False
  - Reset
- Tab Stop
- Enabled
- Component ID
- Reset



- Enhanced Existing tab of the Object List toolbar to list the control hierarchy according to the tab order, with two buttons added at the bottom to control the tab order of the selected control



- Added Split View property to alter the separator line color



- When using the Character Case property in form Edit/Memo controls, the Title Case option does not capitalize the second value in a hyphenated string. An application PROPERTY was implemented to alter the behavior of Title casing, where the first letter in the second value of a hyphenated string is made upper case. The default value is OFF.

```
PROPERTY APPLICATION HYPHEN_AS_WORD_SEPARATOR ON
```

## 8 Functions

The following enhancements have been made to the R:BASE 11 functions:

- New **CVAL('LAST\_MOD')** function to return the date and time stamp (text) for the last modification made to the database data

```
SET VAR vLastMod TEXT = (CVAL('LAST_MOD'))
```

- New **CVAL('LAST\_SCHEMA\_MOD')** function to return the date and time stamp (text) for the last modification made to the database schema

```
SET VAR vLastSchemaMod TEXT = (CVAL('LAST_SCHEMA_MOD'))
```

- New **FISHER** statistical function to return the Fisher transformation. This transformation produces a function that is normally distributed rather than skewed.

```
SET VAR vFisherResult DOUBLE = (FISHER(0.063))
```

- New **RANKAVG** statistical function to return the statistical rank of a given value, within a supplied array of values

```
SET VAR vRankAvg DOUBLE = (RANKAVG('1534', 'Score', 'TestScores', 1))
```

- New **RANKEQ** statistical function to return the statistical rank of a given value, within a supplied array of values

```
SET VAR vRankEQ DOUBLE = (RANKEQ('80,000', 'InvoicePrice', 'CarSales', 1))
```

- Enhanced **SELECT... LISTOF(CoIName)** function to support up to 10,000 characters
- New **CVAL('QUALKEY TABLES')** function to return tables which contain a QualKey column

```
SET VAR vQualkeyTables TEXT = (CVAL('QUALKEY TABLES'))
```

- New **CVAL('QUALKEYS')** function to return columns assigned as a QualKeys

```
SET VAR vQualkeyColumns TEXT = (CVAL('QUALKEYS'))
```

- New **CVAL('DBCCOMMENT')** function to retrieve the comments for a connected database

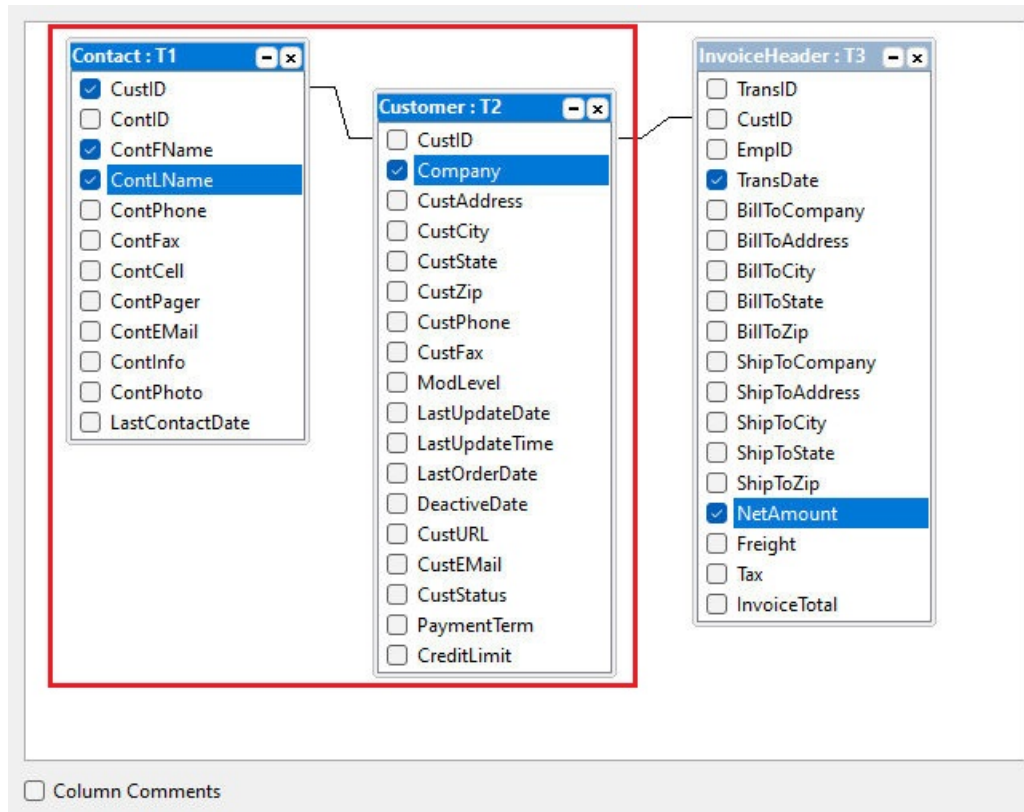
```
SET VAR vDBComment TEXT = (CVAL('DBCCOMMENT'))
```

- Enhanced **CTXT** function to support capturing VARCHAR data to a TEXT string

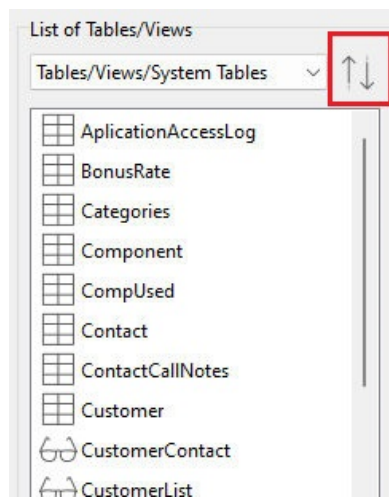
## 9 Query Builder/Query Wizard

The R:BASE 11 Query Builder and Query Wizard have been modernized for efficient query building. The utilities offer following new features:

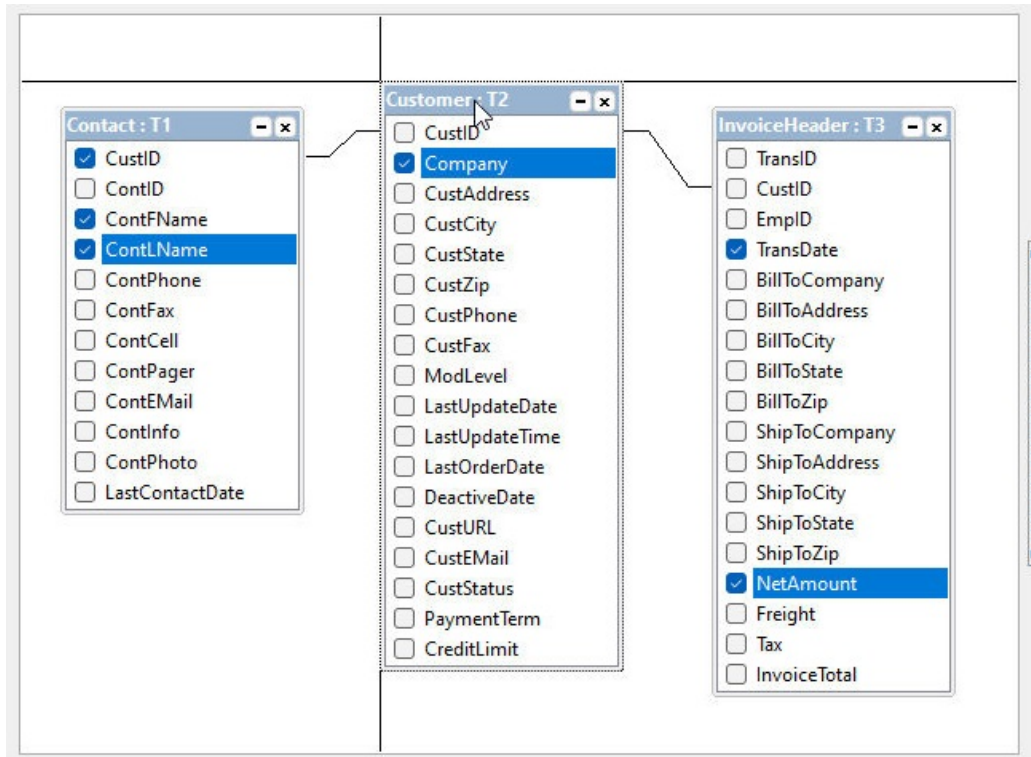
- Added multi-selection (click and drag lassoing) with group moving of tables/views in the Query Wizard



- Added ability to sort the list of table/view objects



- Improved ability to arrange tables/views with [Shift]+Drag functionality to move objects along 0, 90, 180, 270 degree drag paths in the Query Wizard. When Shift+Drag is at play, the drag can only move in a cross direction. The reference point is the current mouse cursor when the Shift+Drag was initiated.

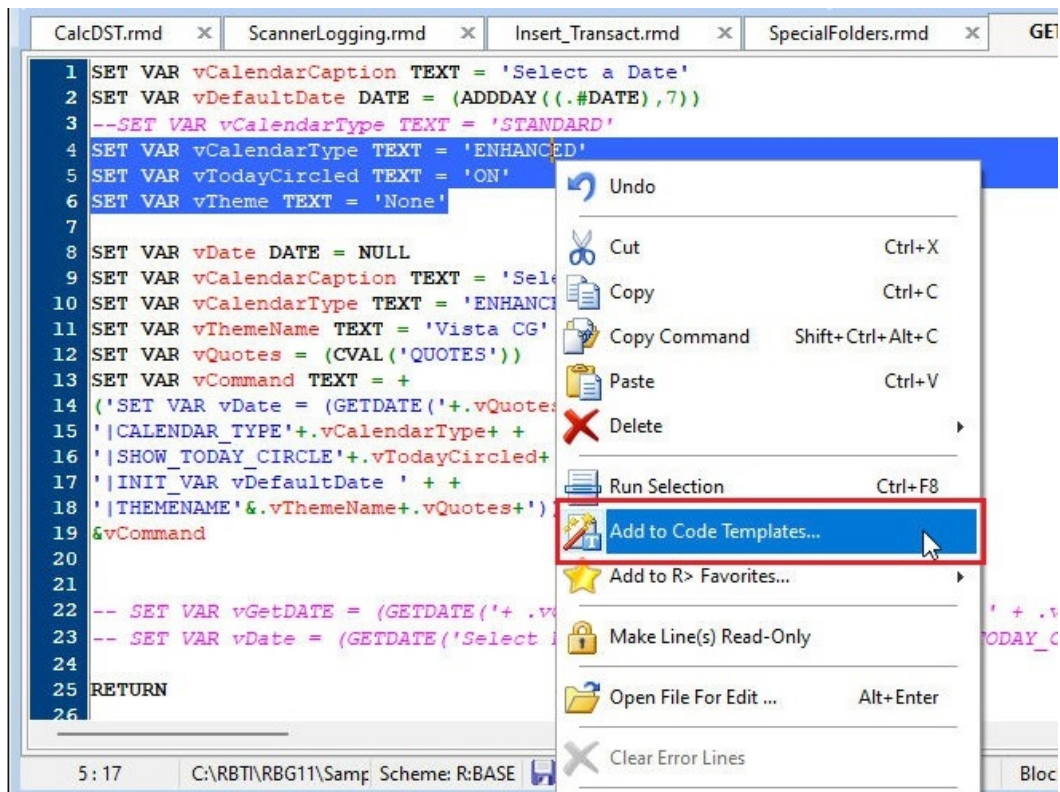


- Enhanced table/view alignment with snap to grid in the Query Wizard

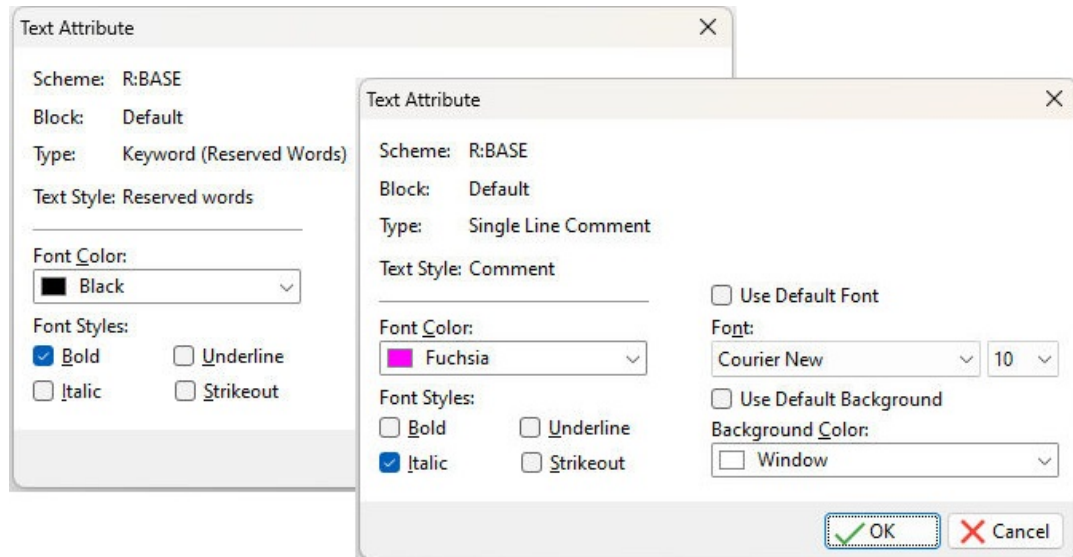
## 10 R:BASE Editor

The R:BASE Editor provides enhanced functionality for working with R:BASE command files. The updated editor offers these special features:

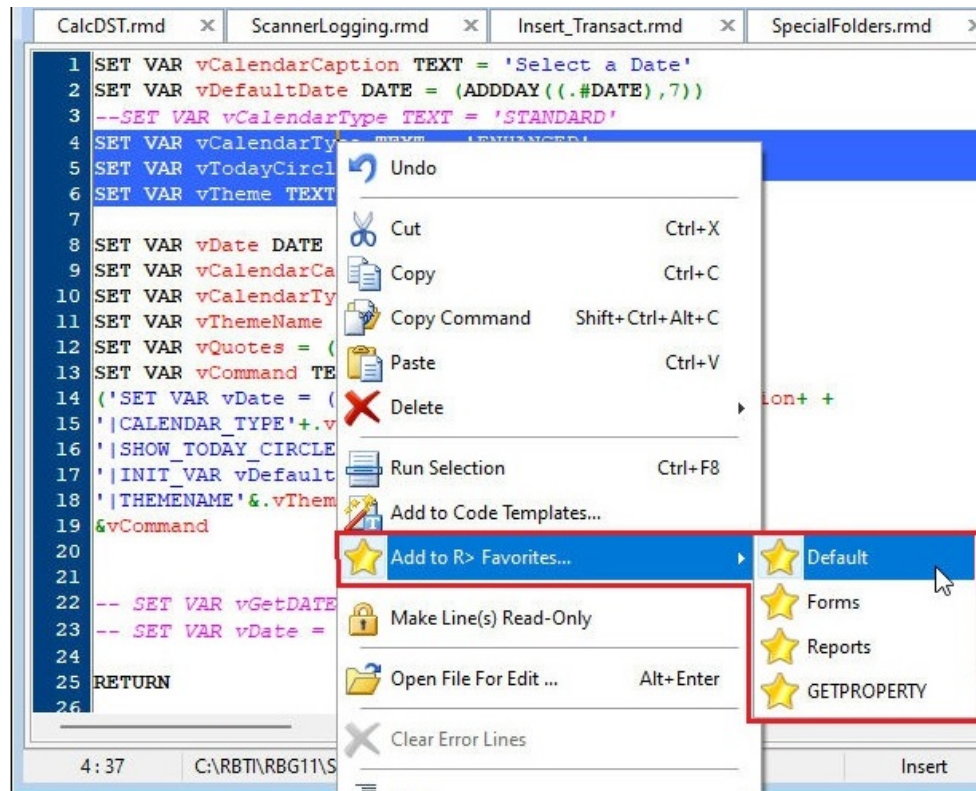
- Added right click "Add to Code Templates" context menu for highlighted text, where a command, or command block, is easily added to the Code Templates utility. The "Code Templates" dialog will appear with the Name and Description fields blank, and the selected code already in the "Code Template" field.



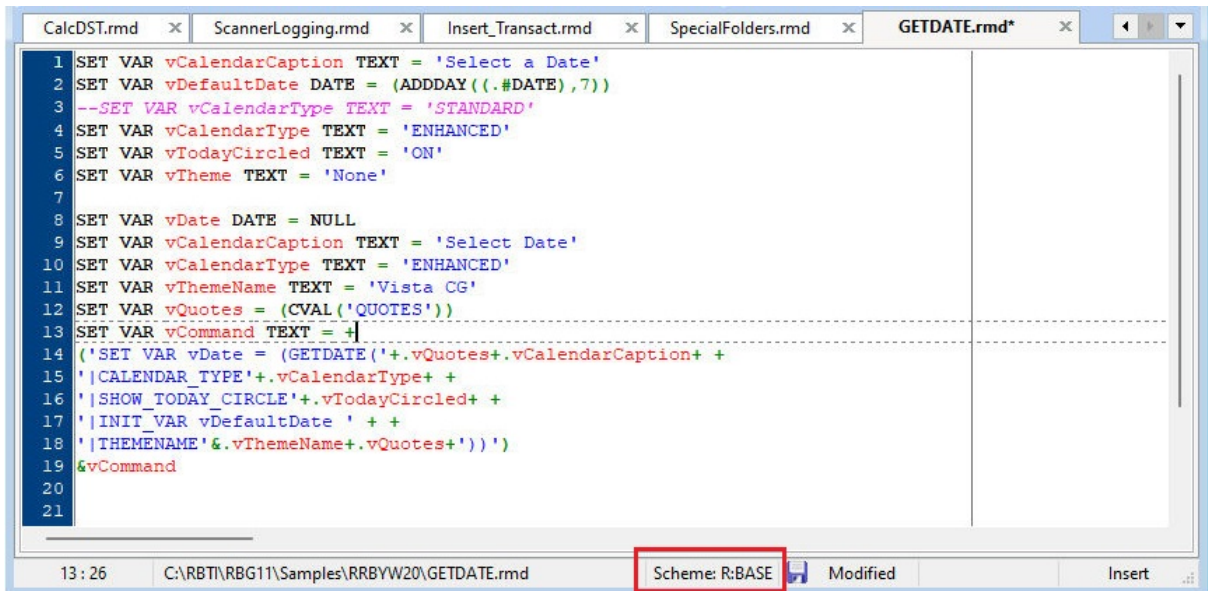
- Ability to review and edit the text attributes for the Syntax Scheme in use (based upon the cursor position), when the [F6] hot key is pressed



- Added right click "Add to R> Favorites" context menu for highlighted text in the R:BASE Editor where a single command is easily added to the R> Prompt Favorite Commands utility. The context menu includes sub-menu options where the added command may be directed to a desired Favorites tab. A confirmation dialog is displayed where continuation characters are removed for multi-line commands, and the syntax may be adjusted.



- Added status bar pane showing the Syntax Scheme (R:BASE, Java, MS-DOS, etc.) in use. If the pane is double clicked, the "Scheme Editor" dialog is opened.



```
1 SET VAR vCalendarCaption TEXT = 'Select a Date'
2 SET VAR vDefaultDate DATE = (ADDDAY((.#DATE),7))
3 --SET VAR vCalendarType TEXT = 'STANDARD'
4 SET VAR vCalendarType TEXT = 'ENHANCED'
5 SET VAR vTodayCircled TEXT = 'ON'
6 SET VAR vTheme TEXT = 'None'
7
8 SET VAR vDate DATE = NULL
9 SET VAR vCalendarCaption TEXT = 'Select Date'
10 SET VAR vCalendarType TEXT = 'ENHANCED'
11 SET VAR vThemeName TEXT = 'Vista CG'
12 SET VAR vQuotes = (CVAL('QUOTES'))
13 SET VAR vCommand TEXT = +
14 ('SET VAR vDate = (GETDATE('+.vQuotes+.vCalendarCaption+ +
15 '|CALENDAR_TYPE'+.vCalendarType+ +
16 '|SHOW_TODAY_CIRCLE'+.vTodayCircled+ +
17 '|INIT_VAR vDefaultDate ' + +
18 '|THEMENAME'&.vThemeName+.vQuotes+'))')
19 &vCommand
20
21
```

13 : 26 C:\RBT\RBG11\Samples\RRBYW20\GETDATE.rmd Scheme: R:BASE Modified Insert

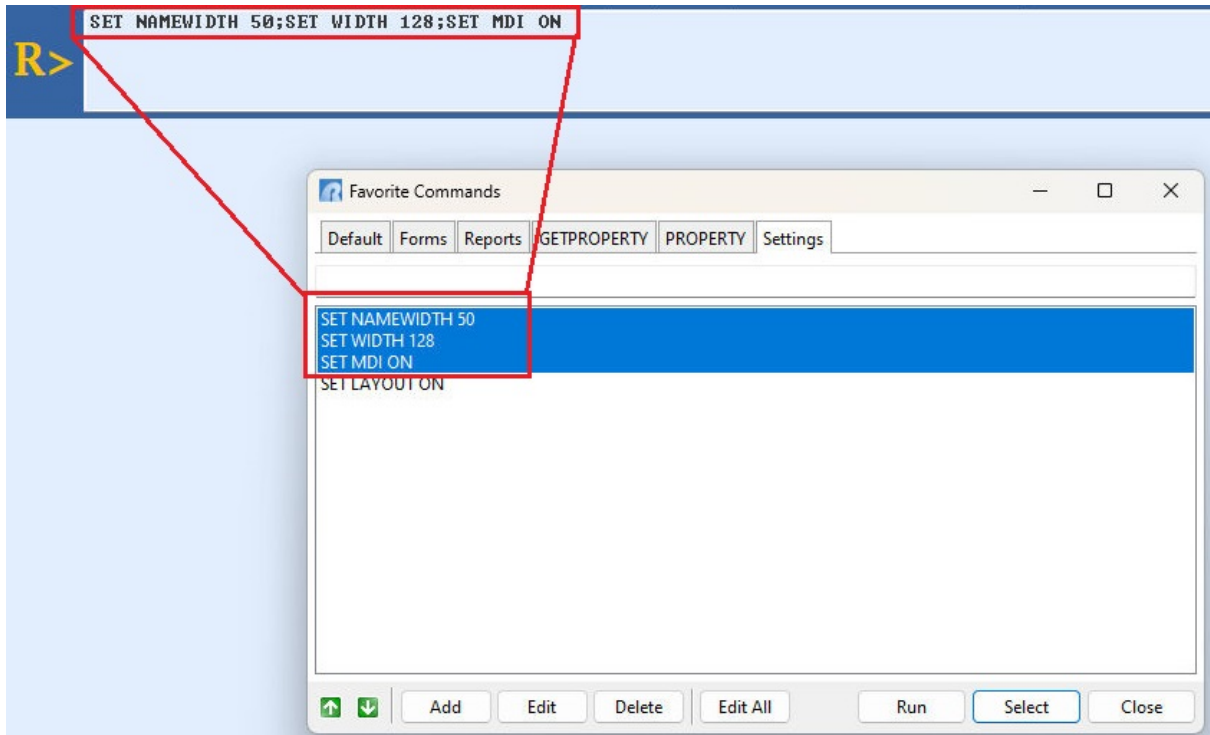
- Enhanced file launch capability within the Compare by Content utility by double clicking the file content



## 11 R> Prompt

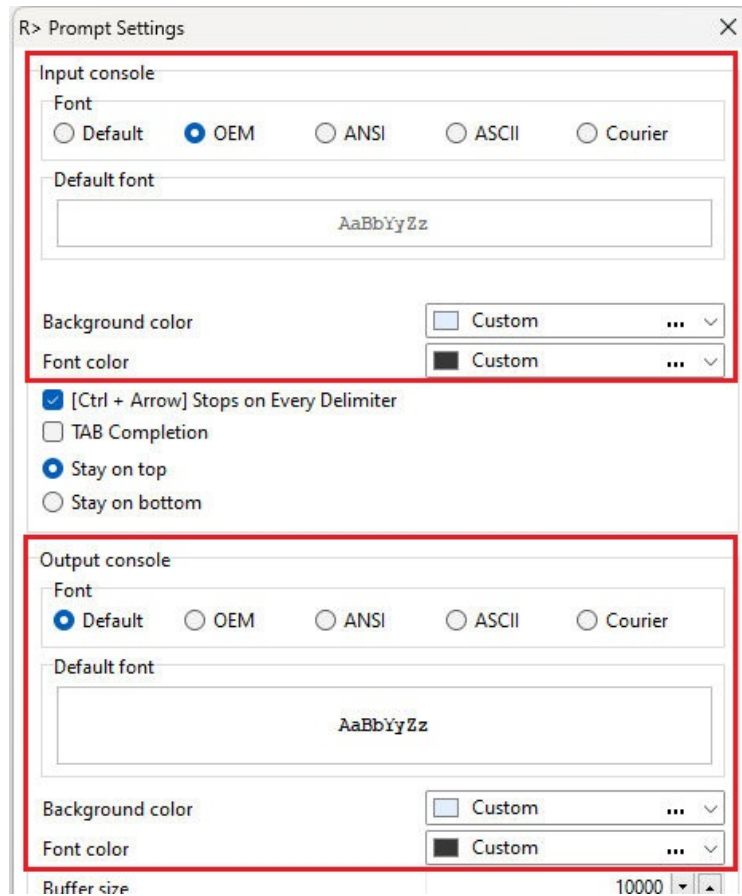
While maintaining the powerful R:BASE 11 R> Prompt, several useful features have been added:

- Enhanced Favorite Commands selection of multiple commands, where the result is concatenated for execution as a group

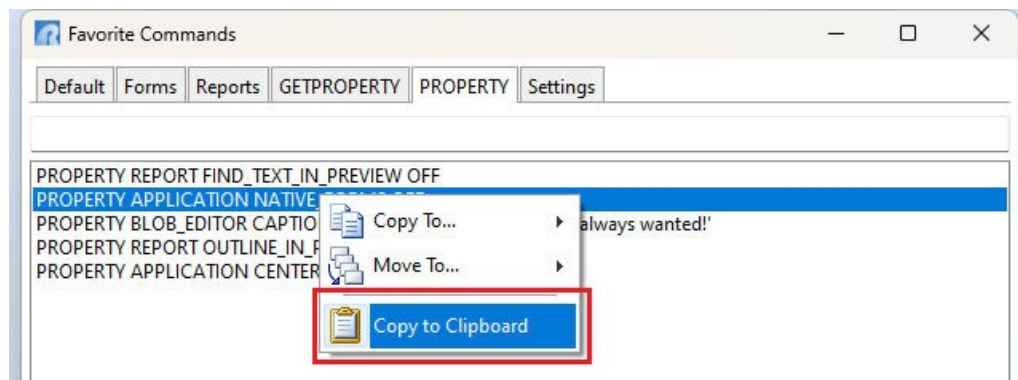


- Added [Ctrl+Page Down] and [Ctrl+Page Up] Command History key combinations to place the focus to the bottom or top of the list

- Enhanced console fonts, where the font name, style, and size are independent for the input console and output console



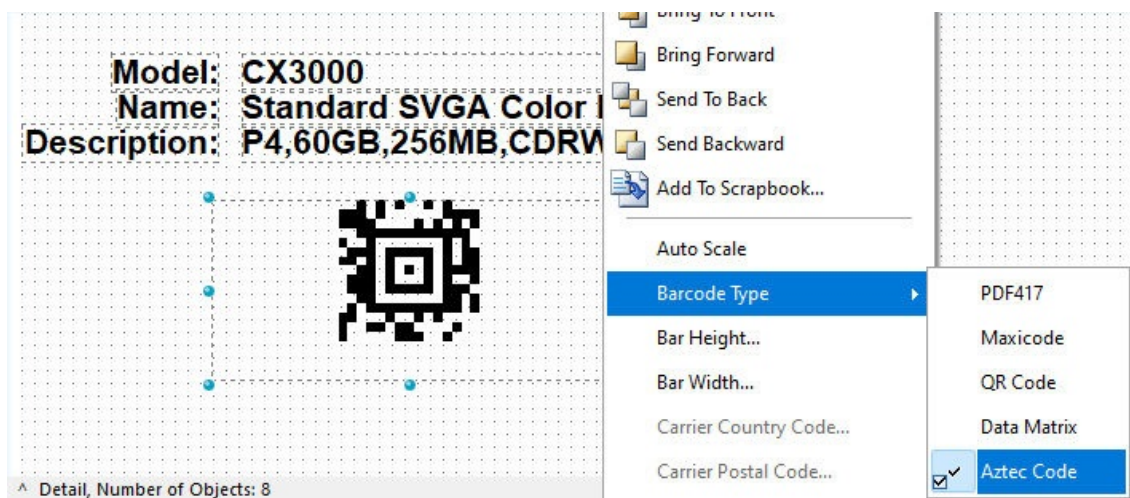
- Enhanced Favorite Commands which interpret a double-click (equivalent to Run button), to efficiently run several commands in sequence
- Added Favorite Commands right click option to copy the selected command to the clipboard



## 12 Reports and Labels

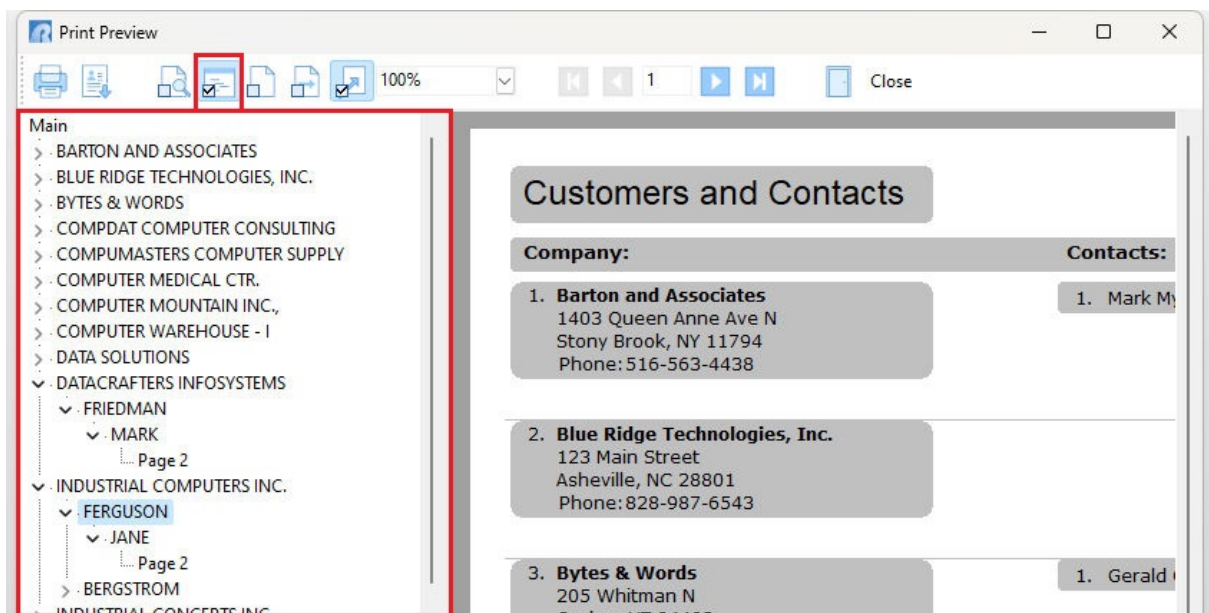
The R:BASE 11 Report and Label Designer is one of the most powerful object oriented report designers available. New features include:

- New Aztec Code 2-Dimensional Barcode type added. Aztec Code is a new 2-Dimensional barcode which uses less space than other matrix barcodes due to its lack of a quiet zone. With a unique finder pattern that resembles an Aztec pyramid in the middle of the symbol, Aztec Code are easily recognizable.

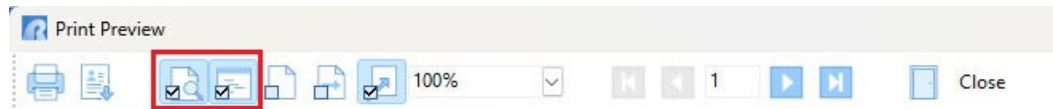


- The Print Preview includes an optional Report Outline for quickly referencing data in large reports. The outline is a helpful extension of the "Find Text" toolbar functionality, where both may be displayed together and are contained within the same panel. The Report Outline may be toggled with the button click or the Ctrl+O key combination. The below PROPERTY command toggles the outline as needed.

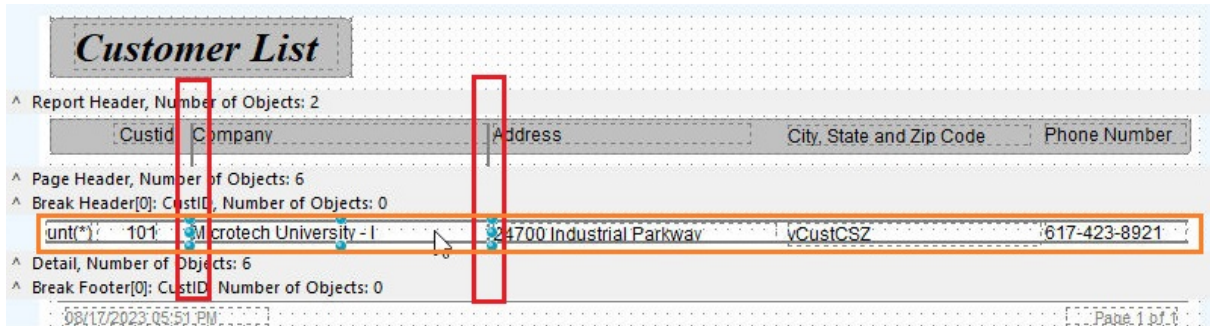
```
PROPERTY REPORT OUTLINE_IN_PREVIEW 'ON|OFF'
```



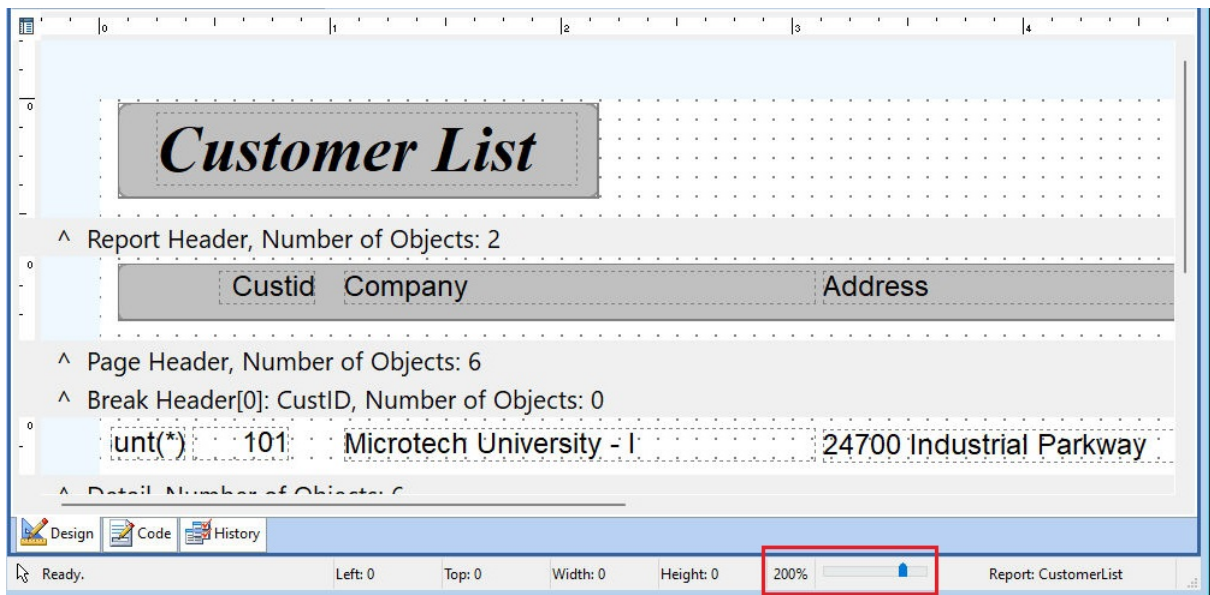
- The Print Preview window includes the "Report Outline" and "Find Text" buttons by default. The buttons may be disabled with the PROPERTY command.



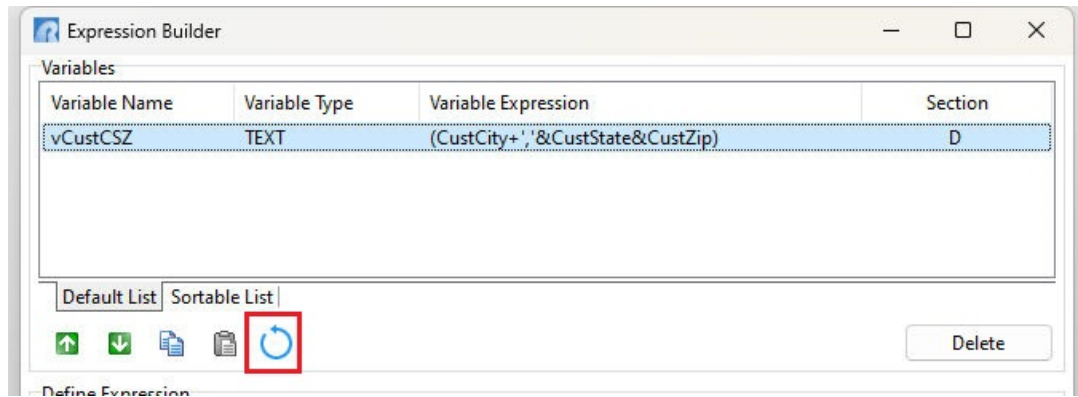
- Added Report Designer guidelines to assist users when placing/moving objects



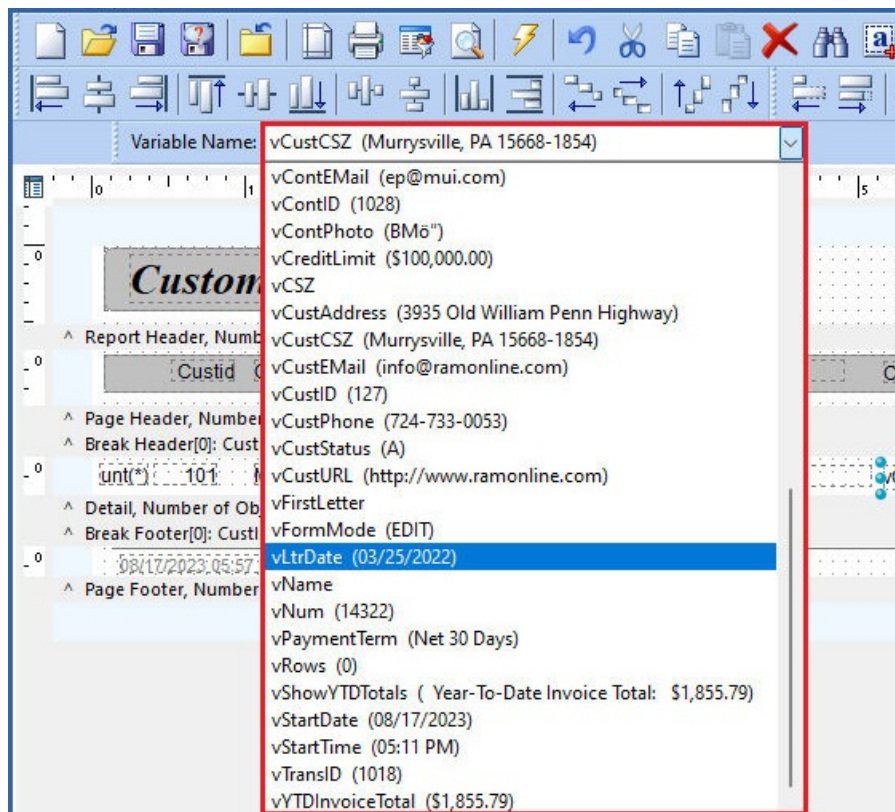
- New zoom capability with a slider object (drag the pointer object across track, or click on the slider track to adjust the zoom percent; 10% per click)



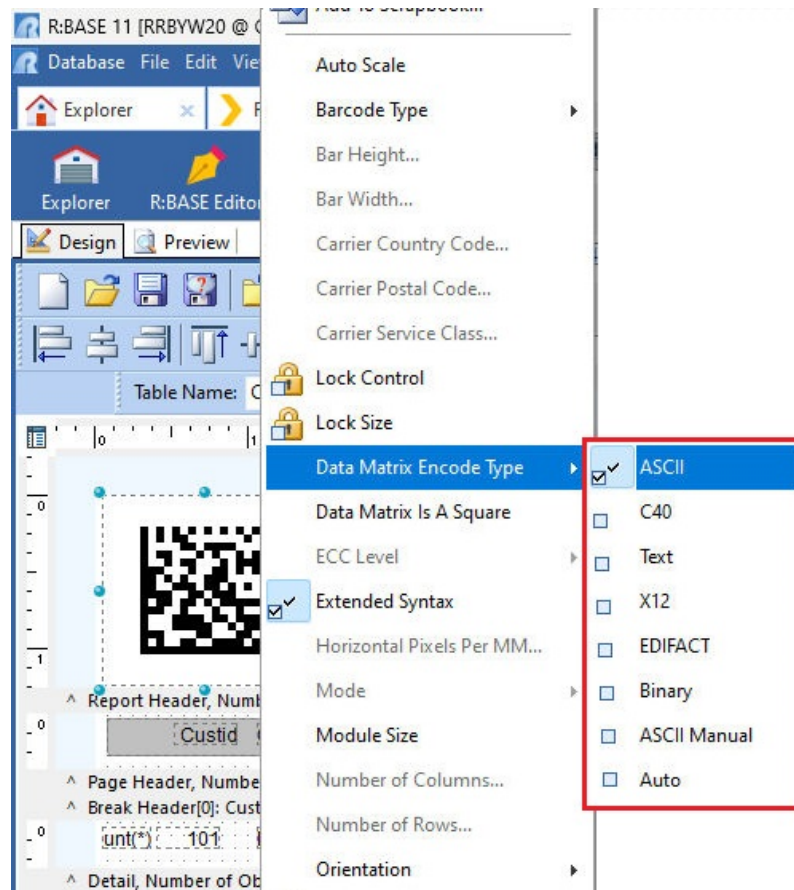
- Added ability to roll back unwanted changes to variable definitions (one variable at a time) in the Expression Builder



- Enhanced Edit toolbar with the display of variable values within the variable list, to help differentiate between variables



- Added encoding types (ASCII, C40, Text, X12, EDIFACT, Binary, ASCII Manual, Auto) for 2D Barcode Data Matrix labels



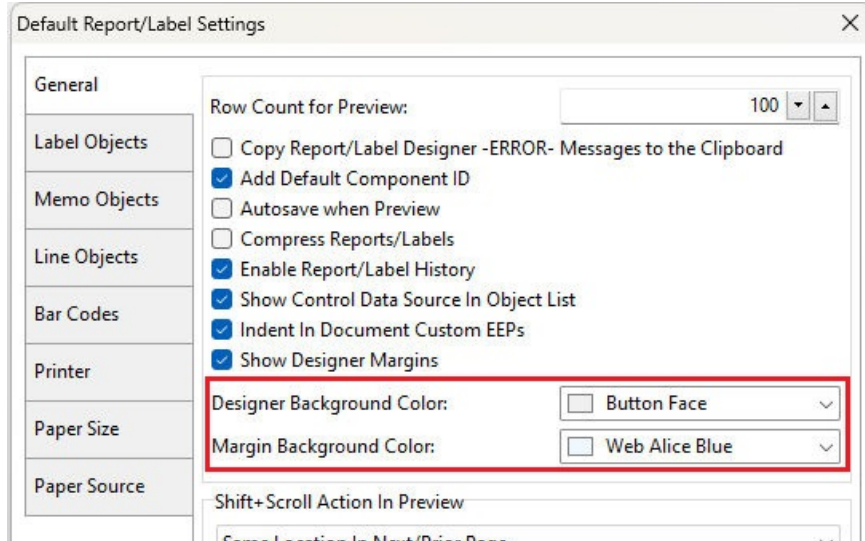
- Enhanced "Border" option to the Format toolbar, providing added functionality with optional sides (left, right, top, bottom), customized color, thickness, and line style of the border lines (from Draw toolbar options)



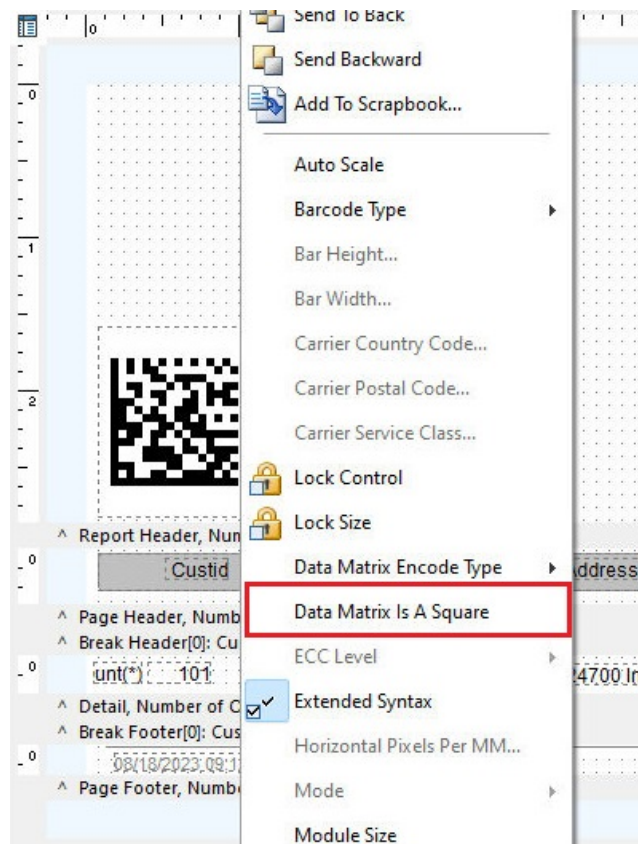
- New "Grow to Height" and "Grow to Width" Options for Size toolbar. The Size toolbar includes new "Grow to Height" and "Grow to Width" option to specify the height and width of the selected object(s) by pixel. When in use, the Report/Label Designer ruler should be set to Screen Pixels for proper review of the assigned values.



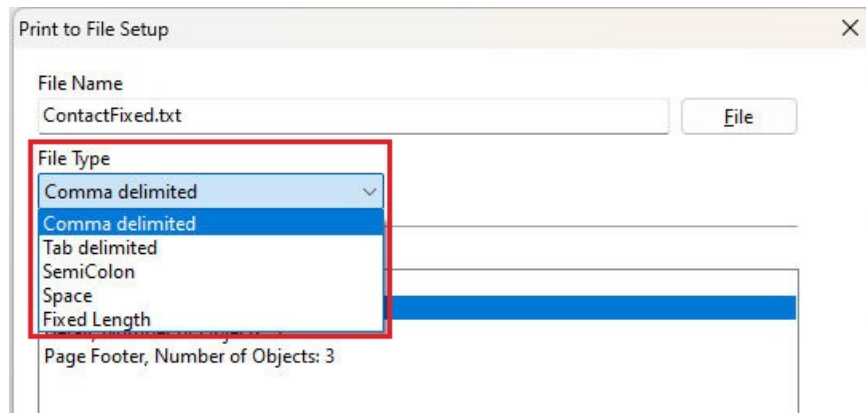
- New display setting to show the Report/Label Designer margins with a custom color. Visible margins for the Report/Label Designer allows users the ability to differentiate between the report/label area and margin area (where objects cannot be placed). The margin display may be turned on/off within the settings. The margin area background color may be customized.



- Added 2D Barcode Data Matrix label settings to specify the size of each Data Matrix module and to force the barcode to be rendered as a square



- Added File Delimiter options for "Print to Text File Setup" utility; SemiColon and Space



- Added "Bring Forward" and "Send Backward" options to the Format toolbar and context menu, to move objects forward or back one layer at a time, if an object is part of multiple layers. The options are similar to Bring to Front and Send to Back, which set a selected object to the foreground or background.



- New Gradient button on the Draw toolbar to define gradient coloring for shape objects

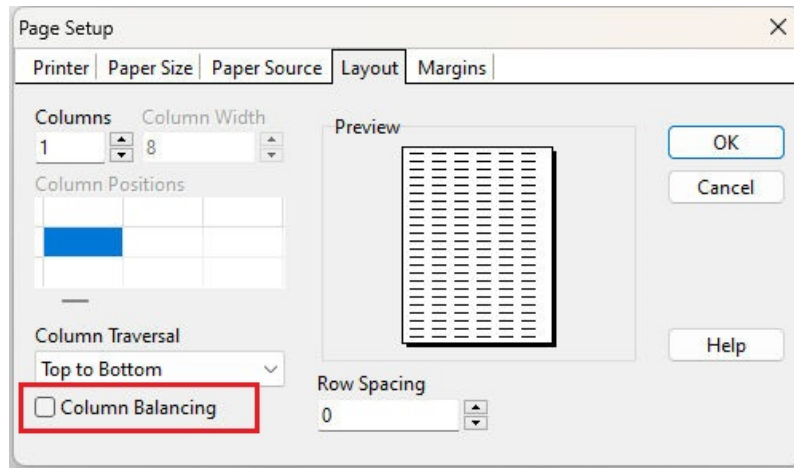


- Additional "align text within borders" options added to the Format toolbar; Align Text Left, Align Text Middle, Align Text Right. The functionality provides text alignment within the confines of the selected objects's borders.

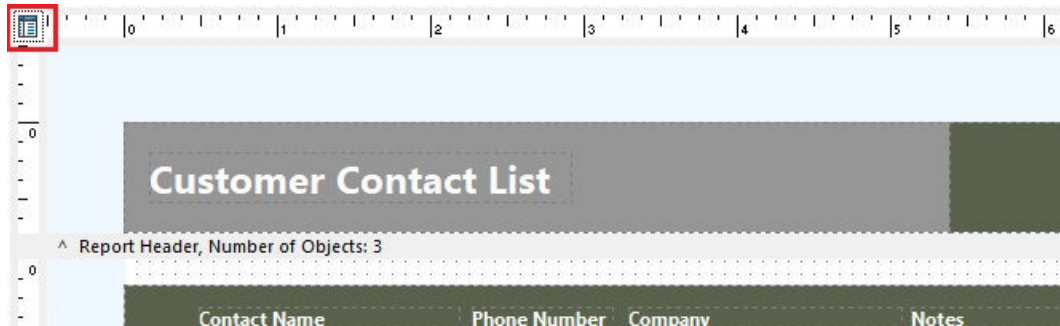




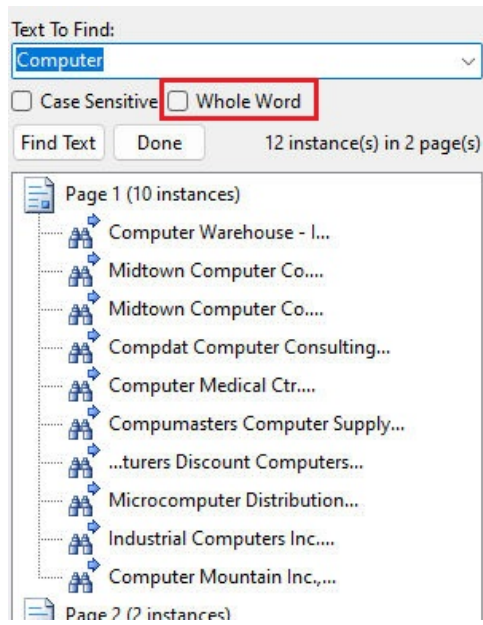
- New "Column Balancing" setting added to the Page Setup > Layout tab, to minimize the number of rows displayed on the report



- Enhanced navigation in the Print Preview with zoom and scrolling with the mouse wheel; [Ctrl]+Wheel = Zoom in/out, [Ctrl]+[Shift]+Wheel = Scroll left/right within page
- Added Clear Selection button in the top left corner of the rulers to deselect any object, which is helpful on reports where many shapes and layers exist



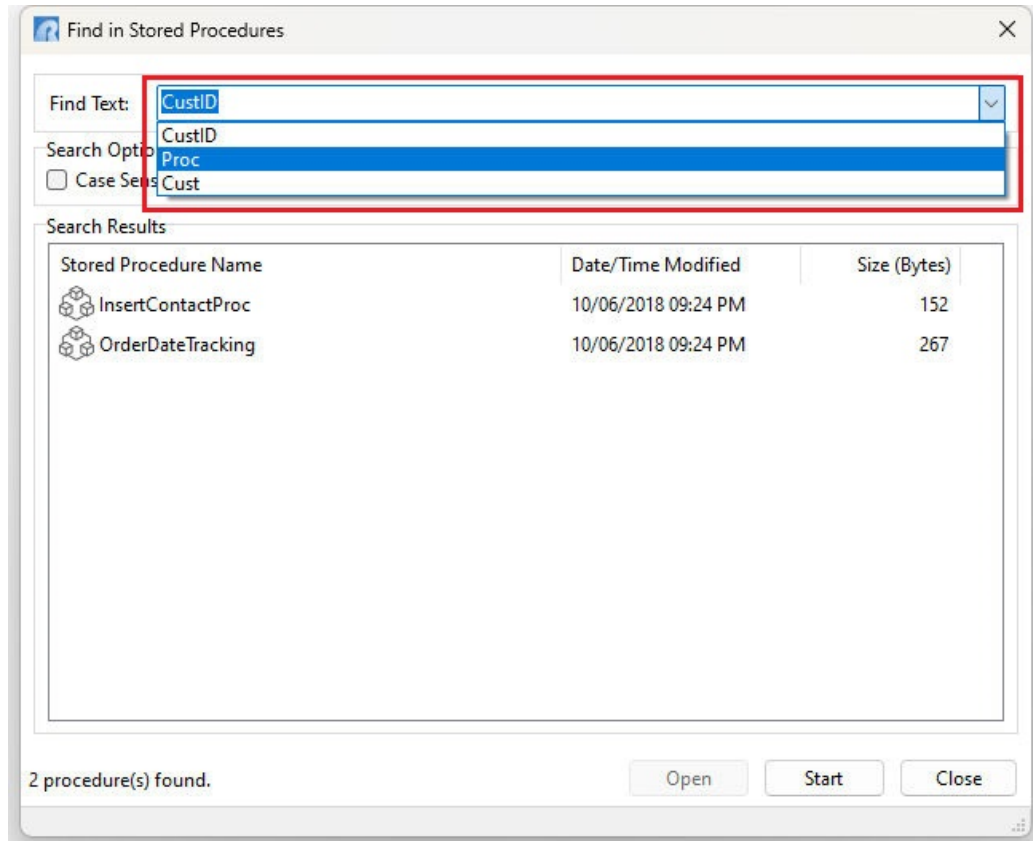
- Enhanced Find in Print Preview search with a "Whole Word" option to locate text that is contained within a whole word



## 13 Stored Procedures

The R:BASE 11 has been updated to make Stored Procedure definition easier. The newest features include:

- Added history for stored procedure searches

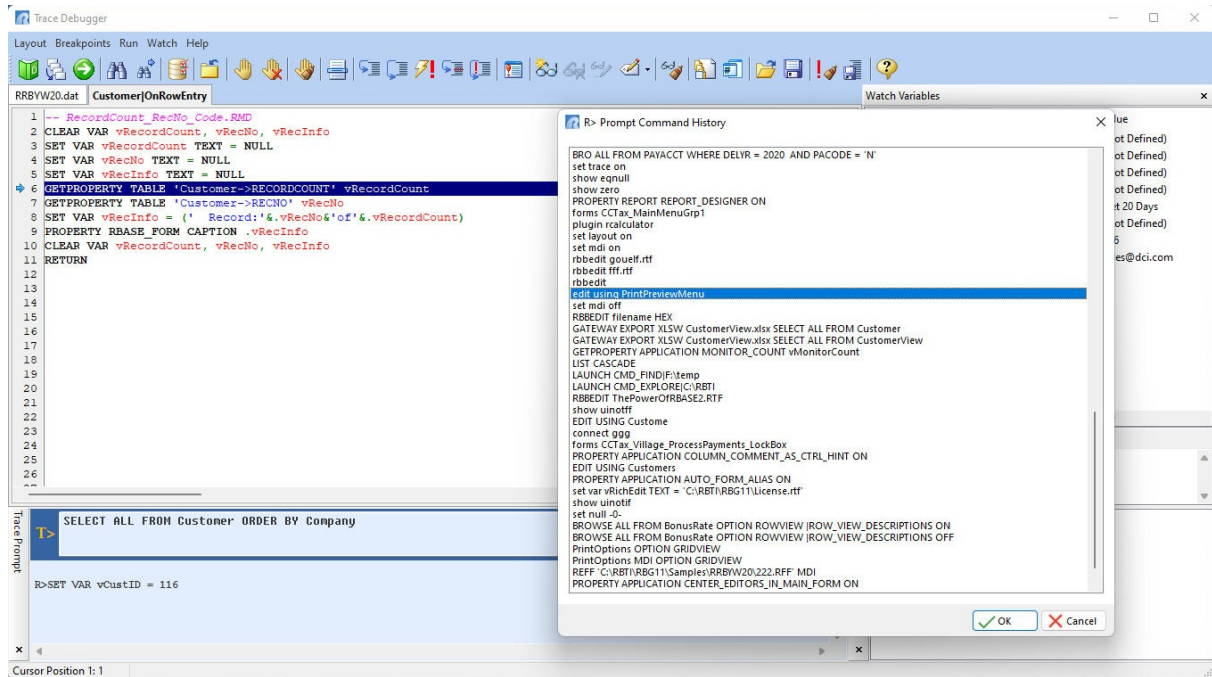


- Enhanced drop trigger flexibility, to optionally drop a before trigger, or after trigger, separately  
`ALTER TABLE tblname DROP TRIGGER [BEFORE/AFTER] INSERT/UPDATE/DELETE`

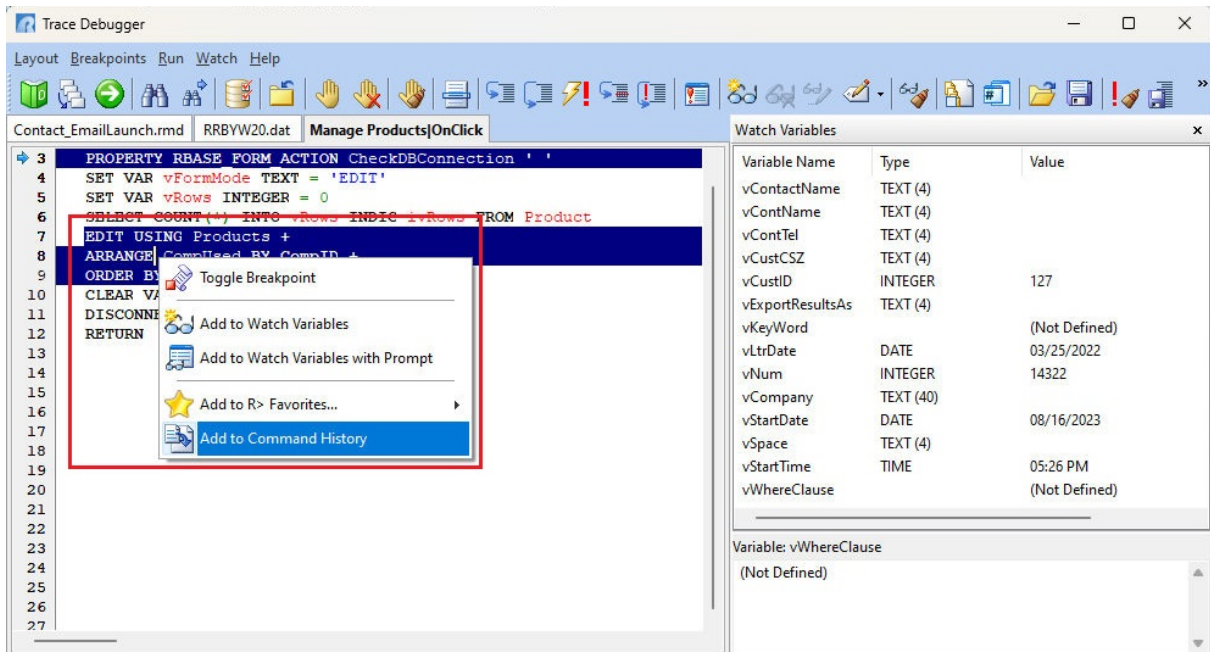
## 14 Trace Debugger

The Trace Debugger allows developers to debug applications and commands files to find programming errors and problems. The debugger has been updated with the following new features:

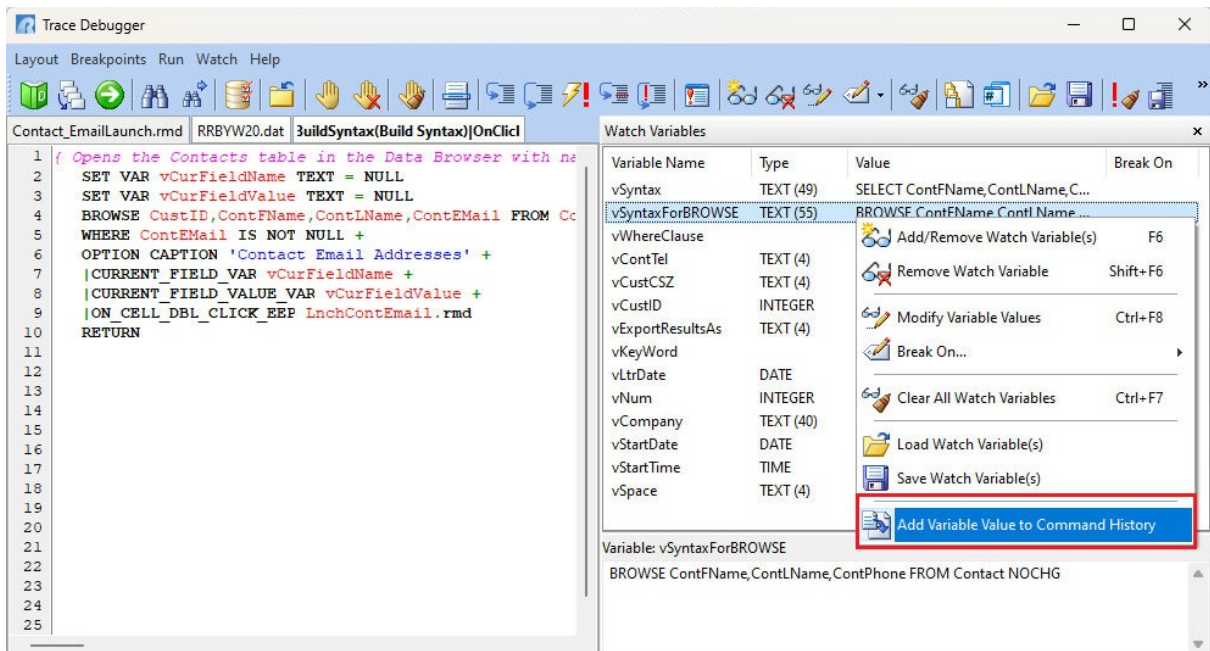
- Trace Prompt toolbar into which any R:BASE command may be manually entered and executed



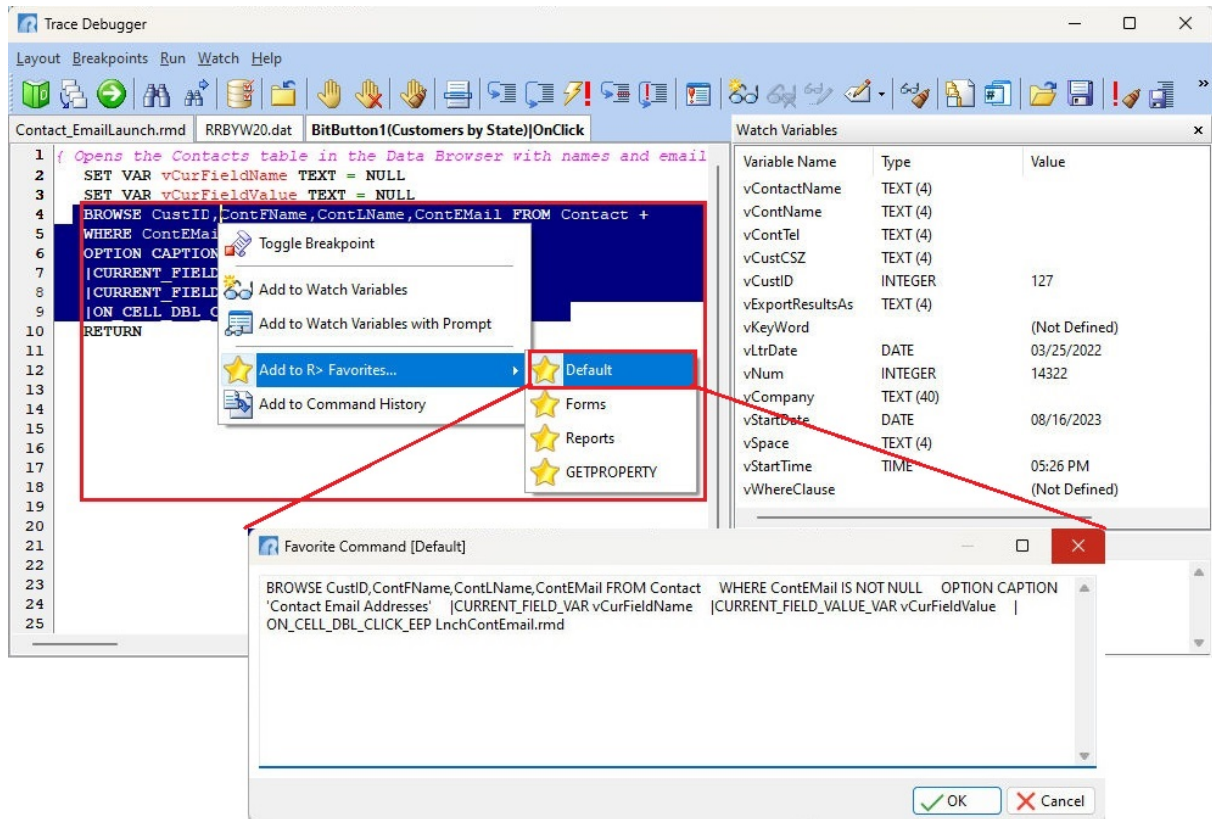
- Added right click menu option for when running a command file/EEP in the debugger, to insert a highlighted command into the R> Prompt Command History



- New "Add Variable Value to Command History" menu option within the Watch Variable panel of the debugger to add dynamically constructed and complex ampersand-variable commands to the R> Prompt Command History. The functionality makes the complex command more accessible for re-execution (possibly with manual modifications)



- Added right click menu option for when running a command file/EEP in the debugger, to insert a highlighted command into the R> Prompt Favorites



## 15 User Privileges

The R:BASE 11 User Privileges interface has been enhanced to make supplying user permissions easier. The newest features include:

- Added ability to allow CREATE privileges on TEMPORARY TABLES to be separate from CREATE privileges on permanent tables

