

R:Biometric X.5



Help Manual



R:Biometric X.5

Manual

by R:BASE Technologies, Inc.

Welcome to R:Biometric X.5!

R:Biometric is an R:BASE software program for secure fingerprint biometric solutions. R:Biometric allows you to store secure individual user fingerprint information in your R:BASE database in order to provide secure data access to the same database or other information. You can store all 10 or just a few fingerprints for users. Detailed enrollment and matching settings are available to control the initial enrollment of users and how fingerprint matches are compared when users log in.

Table of Contents

Part I Introduction	5
1 Introducing R:Biometric X.5	6
2 Copyrights	6
3 License	7
4 Complimentary Technical Support	11
Part II Installation	12
1 System Requirements	13
2 Things You Will Need	13
3 Software Installation	14
4 Plugin Activation	15
R:BASE	15
R:Compiler for R:BASE	17
Runtime for R:BASE	18
Part III Uninstall	19
Part IV Single Computer Fingerprint Scanner Installation	22
Part V Initial Launch of R:Biometric	24
Part VI User Interface	26
1 Menu Bar	27
2 Tool Bar	27
3 Enrollment Settings	28
4 Matching Settings	28
5 Users	29
Main	30
Contact	31
Custom	32
Notes	33
Fingerprints	33
Add a Fingerprint.....	35
Part VII Command Syntax	37
Part VIII Command Line Parameters	40

Part IX R:Biometric Integration	42
Part X Technical Support	44
Part XI Useful Resources	46
Part XII Feedback	48
Index	50

Part



1 Introduction

1.1 Introducing R:Biometric X.5

R:Biometric is an R:BASE software program for secure fingerprint biometric solutions. R:Biometric allows applications to store secure individual user fingerprint information in your R:BASE database in order to provide secure data access to the same database or other information. All ten or just a few fingerprints can be stored for users.

An easy-to-use interface allows administrators to control many fields for user information and several scanners in a multi-scanner environment. Detailed enrollment and matching settings are available to control the initial enrollment of users and how fingerprint matches are compared when users log in.

The list of displayed users may be filtered to a specific name, birth date, and anniversary criteria. The filter also allows for fields to be combined for more specific results.

R:Biometric includes an R:BASE Plugin (.rbm) to integrate fingerprint security into R:BASE applications. Parameters are also available to enroll user's into the R:Biometric tables.

R:Biometric supports command line parameters to include within desktop shortcut properties, or use with the R:BASE LAUNCH command, automatically connect to a database.

R:Biometric Supported Applications:

- R:TimeTrack
- R:JobTrack
- Any application where you need to verify a user's identity based on their fingerprint

Note: This software does not store fingerprints, only the algorithm to uniquely identify fingerprints. R:Biometric does not support the ability to print or make fingerprints available in any way.

1.2 Copyrights

Information in this document, including URL and other Internet web site references, is subject to change without notice. The example companies, individuals, products, organizations and events depicted herein are completely fictitious. Any similarity to a company, individual, product, organization or event is completely unintentional. R:BASE Technologies, Inc. shall not be liable for errors contained herein or for incidental consequential damages in connection with the furnishing, performance, or use of this material. This document contains proprietary information, which is protected by copyright. Complying with all applicable copyright laws is the responsibility of the user. Without limiting the rights under copyright, no part of this document may be reproduced, stored in or introduced into a retrieval system, or transmitted in any form or by any means (electronic, mechanical, photocopying, recording, or otherwise), or for any purpose, without the express written consent of R:BASE Technologies, Inc. We reserve the right to make changes from time to time in the contents hereof without obligation to notify any person of such revision or changes. We also reserve the right to change the specification without notice and may therefore not coincide with the contents of this document. The manufacturer assumes no responsibilities with regard to the performance or use of third party products.

Products that are referred to in this document may be either trademarks and/or registered trademarks of the respective owners. The publisher and the author make no claim to these trademarks.

The software described in this document is furnished under a license agreement. The software may be used or copied only in accordance with the terms of that agreement. Any unauthorized use or duplication of the software is forbidden.

R:BASE Technologies, Inc. may have patents, patent applications, trademarks, copyrights, or other intellectual property rights covering subject matter in this document. Except as expressly provided in any written license agreement from R:BASE Technologies, Inc., the furnishing of this document does not give you any license to these patents, trademarks, copyrights, or other intellectual property.

Trademarks

R:BASE®, Oterro®, RBAAdmin®, R:Scope®, R:Mail®, R:Charts®, R:Spell Checker®, R:Docs®, R:BASE Editor®, R:BASE Plugin Power Pack®, R:Style®, RBZip®, R:Mail Editor®, R:BASE Dependency Viewer®, R:Archive®, R:Chat®, R:PDF Form Filler®, R:FTPClient®, R:SFTPClient®, R:PDFWorks®, R:Magellan®, R:WEB Reports®, R:WEB Gateway®, R:PDFMerge®, R:PDFSearch®, R:Documenter®, RBInstaller®, RBUpdater®, R:AmazonS3®, R:GAP®, R:Mail Viewer®, R:Capture®, R:Synchronizer®, R:Biometric®, R:CAD Viewer®, R:DXF®, R:Twain2PDF®, R:Tango®, R:Scheduler®, R:Scribbler®, R:SmartSig®, R:OutLink®, R:HASH®, R:JobTrack®, R:TimeTrack®, R:Manufacturing®, R:GeoCoder®, R:Code®, R:Fax®, R:QBDataDirect®, R:QBSynchronizer®, R:QBDBExtractor®, and Pocket R:BASE® are trademarks or registered trademarks of R:BASE Technologies, Inc. All Rights Reserved. All other brand, product names, company names and logos are trademarks or registered trademarks of their respective companies.

Windows, Windows 11-10, Windows Server 2022-2012, Bing Maps, Excel, Access, SQL Server, and Outlook are registered trademarks of Microsoft Corporation. OpenOffice is a registered trademark of the Apache Software Foundation.

Printed: February 2024 in Murrysville, PA

First Edition

1.3 License

R:BASE TECHNOLOGIES, INC. LICENSE AGREEMENT

R:Biometric X.5 Single Seat License

This is a legal agreement between you, the end user ("**Licensee**"), and R:BASE Technologies, Inc. ("**RBTI**"). Please read the terms and conditions of this License Agreement before using this software. By you selecting "I accept the license agreement" and clicking "Next" during product installation means you expressly accept the terms and conditions of this Agreement. If you do not accept the terms and conditions of this Agreement, you must stop installing the Product and click "Cancel". Your money will be refunded based upon proof of purchase, and in compliance with the return period described in the LIMITED WARRANTY below. A violation of the License, brings damage both financially and to the reputation of RBTI, and in the occurrence of either, both termination of the license agreement and civil damages will be vigorously sought. Once you have clicked "I accept the license agreement", you are entitled to use the Product under the following terms and conditions of this Agreement:

LICENSE

This RBTI License Agreement permits you to use one copy of the R:Biometric computer software with associated utilities (the "**Program**") and accompanying user documentation (the "**Documentation**") on any single computer. If you do not have a Site License or at least one 5 Seat Add-On License, this program can only be installed on a single machine. However, you can open multiple sessions and be connected to the same and/or other local or network databases on the same machine simultaneously. (The 5 Seat Add-On License permits additional seats to access the Program, in 5 seat increments if each is physically linked to a single file server and you have obtained a separate license for a Single Seat version of the Program. 5 Seat Add-On Licenses must be licensed at the same Single Seat version). A Program is "being used" on a computer when it is loaded into a temporary memory or installed on a hard drive in the computer. However, a copy of the Program installed on a network server for the sole purpose of distribution to other computers is not "being used". Each seat having access to the Program must have an appropriate license. If you anticipate that the number of seats with access to the Program will exceed the number of seats for which you are licensed, you must take steps to ensure that the appropriate licenses are obtained for each seat.

5 SEAT ADD-ON AND SITE LICENSES

If a printed or other form of "hard-copy" License accompanied the copy of the Program you received whose terms vary from this agreement, then the hard-copy License governs your use of the Program. 5 Seat Add-On and Site Licenses allow you to install the Program on the total number of machines for which you are licensed only.

SATELLITE LICENSES

A Satellite License permits a Licensee to use one copy of the copy of the Program on any additional single computer, for additional development to accompany an existing Single Seat License. The Satellite License must be licensed to the same user as the existing Single Seat License. Each seat having access to the Program must have an appropriate license.

EVALUATION LICENSES

If you have purchased or received an Evaluation License for the Program, the Evaluation Licenses are inherently Single Seat licenses and are governed by the same stipulations regarding the limitations of how many machines the Program can be installed on. Evaluation products may have certain features disabled and are not marketed to be a full version product. Lastly, Evaluation Licenses are non-transferable and may contain an expiration date or lockout after a certain period of time.

COPYRIGHT AND RESTRICTIONS

RBTI retains full ownership rights in the Program and Documentation. You may make a single copy of the Program; to be used solely for backup or archival purposes, or you may transfer the Program onto a single hard disk provided you keep the original solely for backup or archival purposes. Such copies shall be owned by RBTI. You may not copy any printed material or Documentation without prior permission. You may not decompile, disassemble cross-compile, reverse engineer, or make or distribute any other form of, or derivative work from, the Program. You may not obscure, alter or remove any RBTI copyright, trademark or proprietary rights notices.

TRANSFER OF LICENSE

You may not lend, rent or lease the Program or Documentation or any copies to any person. A transfer of license is only authorized through completion of the Consent to Assignment and Assumption of Contract agreement from RBTI. Upon license transfer, you are permanently giving such person possession of all copies of the Program and Documentation, are permanently giving up your right to use the Program and Documentation, and the recipient agrees to the terms of this License Agreement.

STEP UPS AND UPGRADE PURCHASES

As the Licensee, you are authorized to use the Program only if you are an authorized user of a qualifying product as determined by RBTI. The new license agreement takes the place of the agreement of the qualifying software you stepped up or upgraded from. After you upgrade, you may no longer use the software from which you upgraded. When you install the upgrade, you must uninstall the copy of the qualifying product.

TERM OF LICENSE

The licensing provided in this License Agreement is perpetual unless you violate any of its terms or conditions, at which time the license will automatically terminate. Upon termination you must return all copies of the Program and Documentation to RBTI or certify in writing to RBTI that all such copies have been destroyed and uninstalled from each workstation and/or network server. RBTI reserves the right to, at its expense and without prior notice, conduct periodic inspections for licensing compliancy. If licensee is found to be in violation of current agreement, RBTI may commence a civil action seeking fines, damages, attorney's fees and injunctive relief and may also, in appropriate circumstances, seek criminal prosecution.

ACTIVATION CODES

The Program requires activation using a unique code. If you purchase a Single Seat License with or without 5 Seat Add-On Licenses, you agree to comply with the license activation and verification procedure described in this section of the Agreement. The activation technology may prevent your use of the Program if you do not follow the activation process described in this Agreement.

Each activation code is tied to one Windows operating system computer. A dual-boot computer with multiple operating systems cannot activate a Single Seat License on more than one operating system. Any software utilities which alter how the Program is installed on a local drive are not supported. This includes any utilities which alter, remove or transfer the location of the Program on the hard drive, or any hard drive utilities which alter the physical properties of the local drive.

The Program activation can be completed automatically through an Internet connection or manually through a provided email option. In doing so, the Program Registration Number and Computer ID must be provided. License validation allows a number of activations based upon the number of licenses purchased.

If a computer is no longer using the Program, through license transfer or hardware failure, the Activation Key that was used on the computer must be submitted to R:BASE Technologies so the key may be disabled, which will then free up that used activation. Once a key is reported as no longer in use and deactivated, it can no longer be used on that computer. Product deactivation can be performed automatically from within R:BASE. To review the License Key and Activation Key product information, select "Help" > "Product Activation" from the Menu Bar.

Licenses for the Corporate VIP Licenses of the Program are not controlled by activation codes and can be operated from computers that are not connected to the Internet.

SOFTWARE SUPPORT

The availability of software support services is subject to the End of Support (EOS) and End of Life (EOL) product life cycle, and to an active Software Assurance Plan. Where applicable, licensees will be provided with an option to upgrade to the current supported version of a software product.

LIMITED WARRANTY

RBTI warrants to you, as the initial user, the Program will perform substantially in accordance with the Documentation, provided it is used in unaltered form with functioning equipment and operating systems for which it was designed. RBTI will, at its option, with proof of payment within 30 days of the invoice date and after the Program with Documentation has been deactivated and uninstalled, and software installer, whether provided by download or other means, permanently deleted from all drives and folders, issue a full refund. These are your sole remedies for any breach of warranty. No exceptions will be made.

SERVICES PROVIDED WITH PURCHASE

1. 30-Day Limited Complimentary Technical Support

LICENSEE RESPONSIBILITIES

- To help us expedite the process and provide high quality assistance, the licensee must provide proof of purchase when calling. Proof of purchase is defined as the following: registration number, purchase date, version and build number, and company or individual to which product is registered.
- To have operating system, workstations, and local network installed and functional. RBTI will NOT be responsible for resolving issues not pertaining to the Program.
- Our support staff deals with advanced issues, therefore the person contacting RBTI for assistance should be the system administrator or have other R:BASE/SQL experience and be able to understand and implement the advice given.
- To have the database(s) being converted, safely backed-up before attempting conversion process. RBTI will NOT be held responsible for lost data or corruption as a result of advice given.

R:BASE TECHNOLOGIES, INC. RESPONSIBILITIES

- To provide quality assistance in a timely manner to aid Licensee in the installation of the product within 30 days of the date of purchase.
- To provide a reasonable solution for any resolvable issue. Not all issues are resolvable, and therefore we will acknowledge the existence of known issues or "bugs" which we are presently aware of, that have no reasonable work-around.

RBTI reserves the right to limit the amount of support time allotted to a maximum of 2 HOURS during the 30-Day Complimentary Technical Support Period. We also reserve the right to limit the quantity of calls from a particular Licensee to 30 MINUTES in a single day. Issues are dealt with on a case-by-case basis, and are handled at the discretion of the support agent assigned to the case. Complimentary Support is limited to INSTALLATION and ELEMENTARY CONVERSION related issues ONLY. Our support hours are from 10am. to 6pm. Eastern Time.

For assistance on your APPLICATIONS, DESIGN, or ADVANCED CONVERSION issues, we offer Technical Support Plans of various types to meet your needs. Please visit the SUPPORT area of our website at www.rbase.com for details and pricing.

2. Fixes for Known Issues

RBTI will provide continued product fixes for known issues or "bugs" for 1 YEAR from the software purchase date. After 1 year, users are urged to acquire the necessary Software Assurance Plan to continue with product support and ongoing activations for reinstallations and license transfers.

3. Enhancement Requests

RBTI will provide continued product enhancements for requested features for 1 YEAR from the software purchase date. After 1 year, users are urged to acquire the necessary Software Assurance Plan to continue with product support and ongoing activations for reinstallations and license transfers.

4. Periodic Activations

RBTI will provide periodic product activations of license transfers and/or reinstallations for 1 YEAR from the R:BASE purchase date. Any activation requests that occur beyond the 1 Year purchase date will require an active Software Assurance Plan.

NO OTHER WARRANTIES

Except as explicitly stated above, RBTI makes no express or implied warranties (including any warranties of merchantability or fitness) with respect to the character, function, or capabilities of the program, the documentation or their appropriateness for any user's purposes. RBTI cannot customize product(s) to meet specific needs in all cases. Examples of customization include, but are not limited to: special character sets, foreign language adaptations, specific device drivers or other localization issues. Under no circumstances will RBTI be held responsible for product functionality once alterations have been made to accommodate individual needs.

DISCLAIMER OF WARRANTY

The Program and the accompanying files are sold "as is" and without warranties as to performance or merchantability or any other warranties whether expressed or implied. Because of the various hardware and software environments into which the Program may be put, No warranty of fitness for a particular purpose is offered. Good data processing procedure dictates that any program be thoroughly tested with non-critical data before relying on it. The user must assume the entire risk of using the Program. Any liability of the seller will be limited exclusively to product replacement or refund of purchase price.

HIGH RISK ACTIVITIES

The Program is not fault-tolerant and is not designed, manufactured or intended for use or resale as on-line control equipment in hazardous environments requiring fail-safe performance, such as in the operation of nuclear facilities, air traffic control, aircraft navigation or communication systems, direct life support machines, or weapons systems, in which the failure of the Program could lead directly to death, personal injury, or severe physical or environmental damage ("High Risk Activities"). RBTI specifically disclaims any expression or implied warranty of fitness for High Risk Activities.

LIMITATIONS ON LIABILITIES

RBTI will not be responsible for any costs or damages associated with loss of the use of the Program or any other resources, loss of business or profits, any loss of data, any third-party claims or costs of substitute programs. In no event will RBTI be liable for any incidental, indirect, special, consequential or punitive damages suffered by the user or any other person or entity, whether from the use of the program or documentation, any failure thereof, or otherwise, even if RBTI or its dealers or agents are aware of the possibility of such damages. In no event will RBTI aggregate liability to you or anyone else exceed two times the license fee you paid for the program and documentation in this package. Because some states do not allow the limitation or exclusion of implied warranties and liabilities for consequential or incidental damages, the above limitations may not apply to you.

GENERAL

This License Agreement constitutes the full and complete agreement between parties. RBTI retains all rights not specifically granted herein. RBTI shall not be deemed to have waived any of its rights hereunder or under all copyright laws, trade secrecy laws or otherwise. This Agreement is intended as a legally binding agreement which will be enforced to the full extent permitted under applicable law, in whole or in part. If any one provision of this Agreement is declared invalid or unenforceable, all remaining provisions shall never less remain in effect. The laws of the state of Pennsylvania shall govern this Agreement. RBTI reserves the right to amend, alter, or revoke this agreement at any time. All revisions to this license agreement are available for inspection upon request, supersede conditions in all

past agreements, and render prior license agreements void and unenforceable. Both parties named in this license will only be bound to the terms of the most current revision of this agreement.

U.S. GOVERNMENT RESTRICTED RIGHTS

Use, duplication or disclosure by the Government, its agents or employees is subject to all restrictions imposed by law, regulation or government directive, including but not limited to those restrictions set forth in DFARS 252.227-7013 and 48CFR 52.227-19, as applicable.

R:BASE Technologies, Inc.
<https://www.rbase.com>
rbaseinfo@rbase.com

Copyright 1982-2024 R:BASE Technologies, Inc.
All Rights Reserved
Revised Tuesday, February 06, 2024

1.4 Complimentary Technical Support

30 DAY LIMITED COMPLIMENTARY TECHNICAL SUPPORT

A. LICENSEE RESPONSIBILITIES.

1. To help us expedite the process and provide high quality assistance, the licensee must provide proof of purchase. Proof of purchase is defined as the following: registration number, purchase date, version and build number, and company or individual to which product is registered.
2. To have operating system, workstations, and local network installed and functional. R:BASE Technologies will NOT be responsible for resolving issues not pertaining to the software product.
3. Our support staff deals with advanced issues, therefore the person contacting R:BASE Technologies for assistance should be the system administrator or have other R:BASE/SQL experience and be able to understand and implement the advice given.
4. To have the database, application, and command files being reviewed, safely backed-up before attempting assistance. R:BASE Technologies will NOT be held responsible for lost data or corruption as a result of advice given.

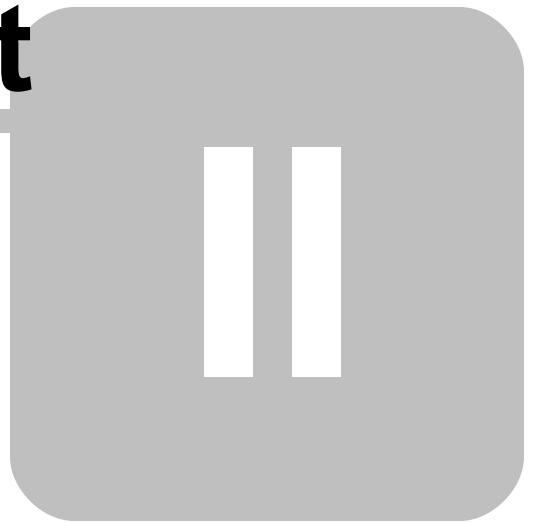
B. R:BASE TECHNOLOGIES, INC. RESPONSIBILITIES.

1. To provide quality assistance in a timely manner to aid in the installation of the product and elementary conversion of database, application, and command files within 30 days of the date of purchase.
2. To provide a reasonable solution for any solvable issue. Not all issues may be solved, and therefore we will acknowledge the existence of known issues, or bugs, which we are presently aware of, that have no reasonable work-around.

R:BASE Technologies reserves the right to limit the amount of support time allotted to a maximum of 2 HOURS during the 30-Day Complimentary Technical Support period. We also reserve the right to limit the quantity of calls from a particular licensee to 30 MINUTES in a single day. Issues are dealt with on a case-by-case basis, and are handled at the discretion of the support agent assigned to the case. Complimentary Support is limited to INSTALLATION and ELEMENTARY CONVERSION related issues ONLY. Our support hours are Monday through Friday, from 10:00 AM to 6:00 PM (EST).

For application, design, or advanced conversion assistance, R:BASE Technologies offers Technical Support Plans of various types to meet your needs. Please visit the Support page at <https://www.rbase.com/support> for details and pricing.

Part



2 Installation

2.1 System Requirements

The following system specifications are recommended for the optimal use of R:BASE and R:BASE-related software.

Workstation Hardware

- 2-Core 2GHz+ CPU
- 2 GB of available RAM (4 GB recommended)
- 2 GB of available hard disk space
- 1024x768 or higher resolution video adapter and display
- Standard mouse or compatible pointing device
- Standard keyboard

Server Hardware

- 2-Core 2GHz+ CPU
- 6 GB of available RAM (8 GB recommended)

Operating System

- Microsoft Windows 11 (Professional)
- Microsoft Windows 10 (Professional)
- Microsoft Windows Server 2022
- Microsoft Windows Server 2019
- Microsoft Windows Server 2016
- Microsoft Windows Server 2012, 2012 R2

Network

- Ethernet infrastructure (Gigabyte recommended)
- Internet connection recommended, but not required, for license activation, software updates, and support
- Anti-virus programs should exclude the R:BASE program, and any add-on product, executable and database files

2.2 Things You Will Need

- License Key

Before launching the installer, it is recommended that you have your 32-character License Key readily available. The License Key is provided in a document, with the email message, when the software was originally purchased. If you have lost or misplaced your License Key, please contact our Support Staff by email at support@rbase.com.

- Internet Access

The computer where the software will be launched should have access to the Internet for activation. The Internet access is used to visit the R:BASE Technologies Web site to provide your required Activation Key.

In instances where the software will be installed on a computer that is not connected to the Internet, you must then contact R:BASE Technologies to provide information displayed on the computer screen. Please contact our Product Activation Staff by email at activationkey@rbase.com. The Registration Number must be provided. The Registration Number is displayed on the invoice/order slip, and within the email, when the software was originally purchased.

2.3 Software Installation

The installation of R:Biometric is fully automated, and does not require user intervention for the initial configuration.

Run the installer ".exe", provided by download, while physically sitting at the workstation to begin the installation process, and read the installer screens for licensing and other information as the program installs.

Installation Directory

C:\RBTI\RBiometricX5

Files Installed

Activation (folder)
 Drivers (folder)
 FPSmm (folder)
 FPScannerManCom.dll
 NCore.dll
 NDeviceManager.dll
 Neurotec.Biometrics.Extractors.dll
 Neurotec.Biometrics.Gui.dll
 Neurotec.Biometrics.Matchers.dll
 Neurotec.Biometrics.Templates.dll
 Neurotec.DeviceManager.dll
 Neurotec.dll
 Neurotec.Gui.dll
 Neurotec.Images.dll
 Neurotec.Licensing.dll
 NeurotecJavaNative.dll
 NExtractors.dll
 NImages.dll
 NLicenses.cfg
 NLicensing.dll
 NMatchers.dll
 NTemplates.dll
 License.rtf
 RBiometricX5.chm
 RBiometricX5.exe
 RBiometricX5.pdf
 RBiometricX5.RBM
 RBiometricX5E.exe
 ReadMe.txt

Requirements:

Plugin Installation

The R:Biometric X.5 Plugin file (RBiometricX5.rbm) must be placed in the R:BASE X.5 program directory or the runtime/compiled application directory.

R:BASE Version	Default Program Directory
X.5 (Version 10.5)	C:\RBTI\RBGX5
X.5 Enterprise (Version 10.5)	C:\RBTI\RBGX5E

VeriFinger Installation Files

The VeriFinger program DLLs (18 in total) and configuration file, NLicenses.cfg, must be copied from the R:Biometric program directory (default: C:\RBTI\RBiometricX5) into the R:BASE program directory or the runtime/compiled application directory. The FPSmm folder must also be copied into the R:BASE program directory or the runtime/compiled application directory. The folder and files are assigned a blue font above.

R:BASE Version	Default Program Directory
X.5 (Version 10.5)	C:\RBTI\RBGX5

X.5 Enterprise (Version 10.5)	C:\RBTI\RBGX5E
-------------------------------	----------------

Engine DLL

If the computer where R:Biometric is installed does not have R:BASE X.5 installed, the R:BASE Engine DLL must be copied from another computer to the SYSTEM directory.

R:BASE Version	Engine DLL File
X.5 (Version 10.5)	RBENGINEX5.DLL
X.5 Enterprise (Version 10.5)	RBENGINEX5E.DLL

2.4 Plugin Activation

R:BASE Plugins can be used to enhance, or extend R:BASE operations. Current R:BASE Plugins use the .RBM file extension.

To begin using any plugin product, the plugin must be registered for use.

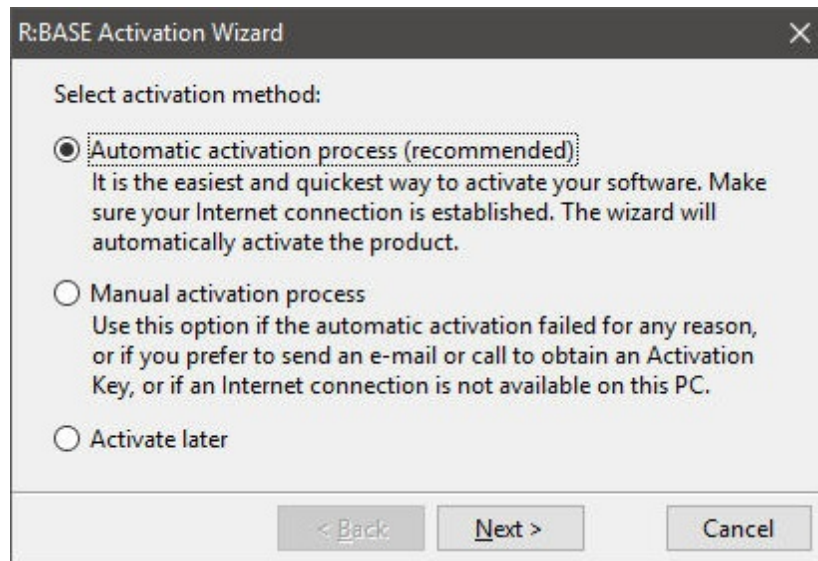
The license type for R:BASE and R:BASE plugin products must match. The license keys supplied with Single Seat and 5 Seat plugin products will only be accepted within Single Seat and 5 Seat versions of R:BASE, and are not accepted within R:Compiler for R:BASE or Runtime for R:BASE programs. The same license structure is also in place for Runtime License Keys for plugin products, where the key will not be accepted within Single Seat and 5 Seat Licenses R:BASE.

2.4.1 R:BASE

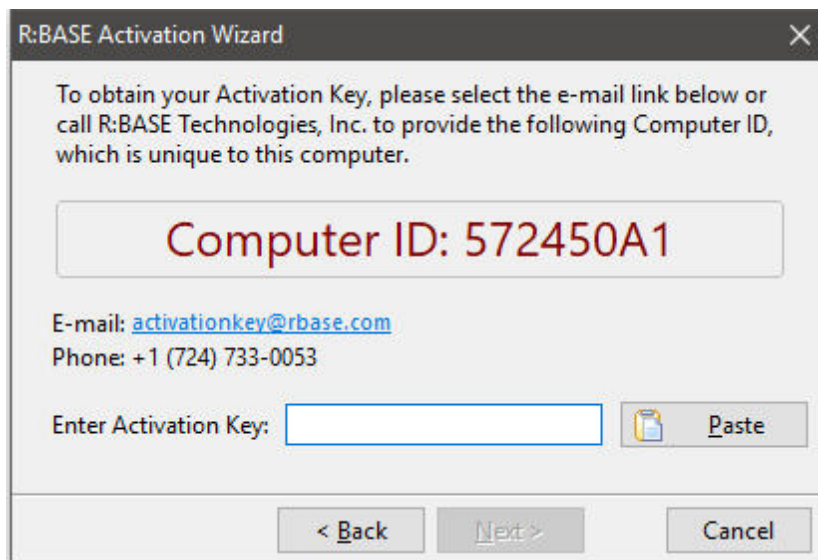
To begin using a plugin product, you must register the software within R:BASE by selecting "Help" > "Product Activation" from the main Menu Bar. In this window, select the "Add New" button where you can enter or copy and paste the License Key you received with your product.

Only "Per Seat" License Keys are valid for this entry screen. All "Runtime" License Keys must be registered within R:Compiler for R:BASE or within Runtime for R:BASE separately.

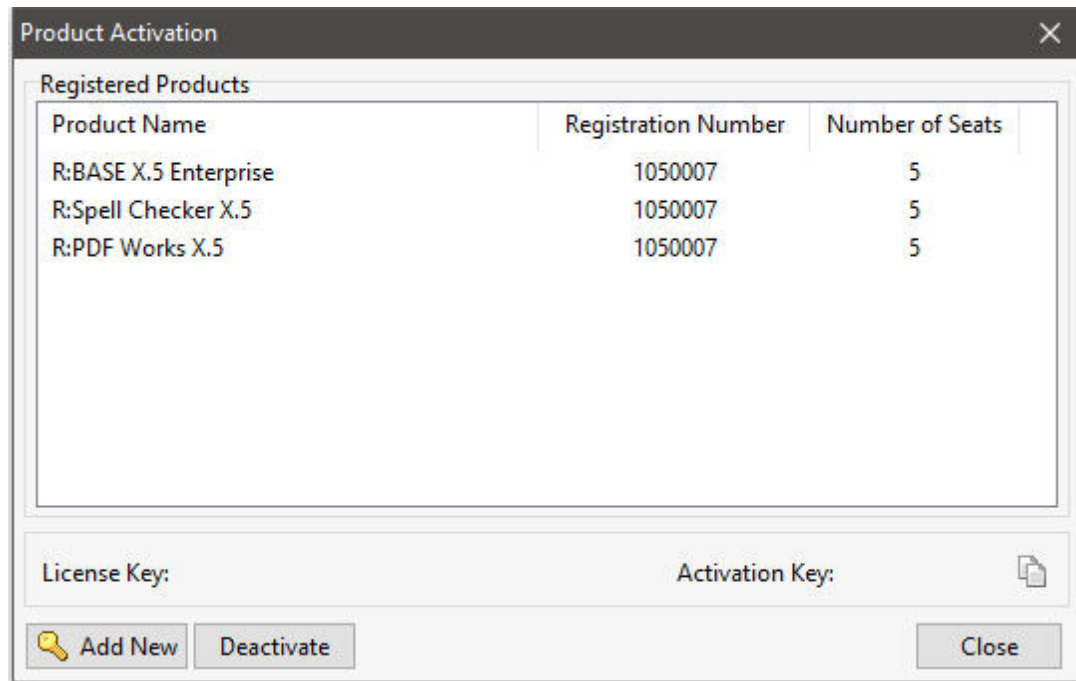
After entering the License Key, you will see a dialog to prompt for your activation method. The software can be activated automatically over the Internet, or manually by retrieving an Activation Key from R:BASE Technologies by email or over the phone. If you select "Later", you will be reminded each time R:BASE starts to activate your copy.



When activating the software manually, you select the e-mail link to launch your email client and send a pre-formatted message to R:BASE Technologies that will contain your License Key and the displayed Computer ID. You will need to provide your R:BASE Registration Number and Computer ID.



At any time, you can review your product information by starting R:BASE, and from the Menu Bar clicking on "Help" > "Product Activation". Your R:BASE Registration Number is displayed on the window. You can also enter additional License Keys for R:BASE add-on products.



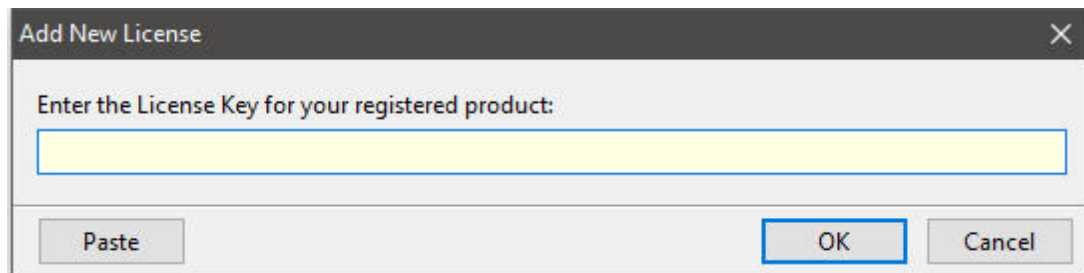
Please be advised that if you are activating multiple workstations, it is highly recommended that you keep records of the computer name, Computer ID and Activation Key for future reference. Access to this information will prove convenient in the event of a hardware failure or license transfer when uninstalling R:BASE.

Please see: [Uninstall/Reinstall](#)

2.4.2 R:Compiler for R:BASE

Runtime License Key

Runtime license keys for an R:BASE Plugin must be stored within the compiled executable. A specific Runtime License Key would be provided after your purchase of the Runtime software product. Adding a Runtime License to your project can be done by selecting the "Add License" button, and pasting the appropriate Runtime License Key into the displayed dialog window.



After a Runtime License is added as a resource, it will be assigned a "Resource ID". This ID consists of the word "License" and an incrementing value for the number of licenses added to the executable.

Plugin File (.RBM)

R:BASE Plugin files can be added and stored within the compiled executable or included within the R:BASE application directory. The Runtime license key pertaining to the R:BASE Plugin must be stored in the compiled executable.

Adding a Plugin to the list of resources can be performed by selecting the "Add Plugin" button on the Tool Bar. You will be prompted to locate the appropriate Plugin file with the .RBM file extension. After a Plugin file is added as a resource, it will be assigned a "Resource ID". This ID consists of the Plugin file name.

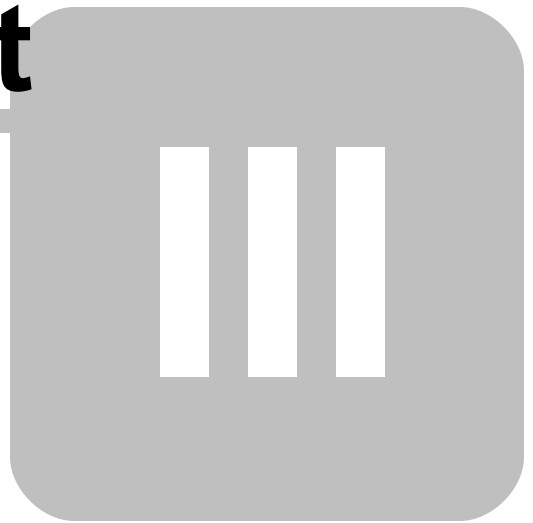
2.4.3 Runtime for R:BASE

After R:BASE Plugins are acquired for Runtime for R:BASE applications, the Plugin file must be included in the Runtime application folder, to be loaded when the Runtime application launches.

To load the Plugin, the License Key must be included into the Runtime for R:BASE session by adding the following PROPERTY command within the application startup file:

```
PROPERTY ADD_LICENSE #####-#####-#####-#####-#####-#####-#####-##### ' '
```

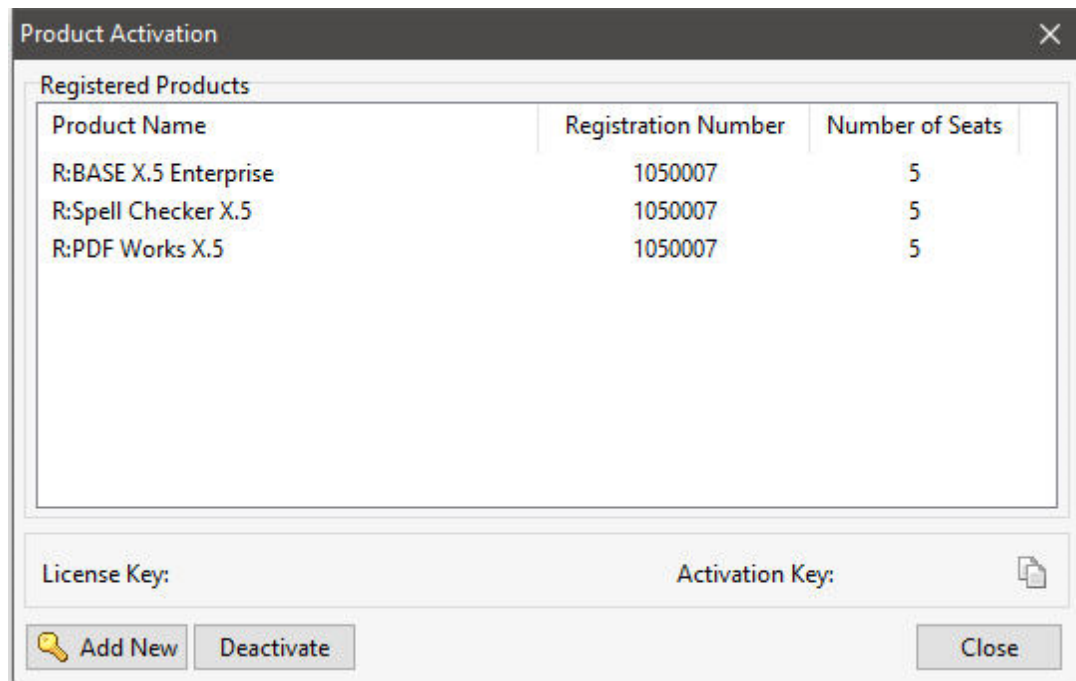
Part



3 Uninstall

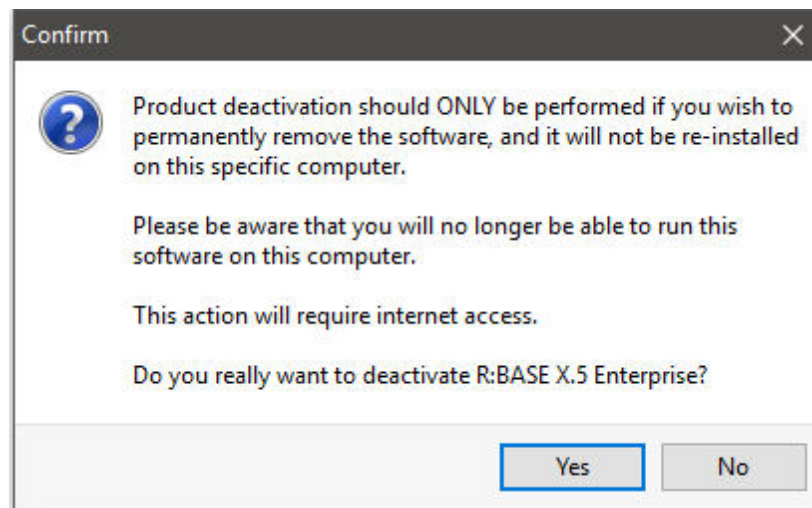
If a computer is no longer using R:Biometric, through license transfer or hardware failure, the Activation Key that was used on that computer must be submitted to R:BASE Technologies so we can then remove the Activation Key from our log. We will disable the Key, which will then free up that used activation. Once a key is reported to us as no longer in use and deactivated, it can no longer be used on that computer.

Product deactivation can be performed automatically from within R:BASE. To review your product information select "Help" > "Product Activation" from the Menu Bar. Here, the License Key and Activation Key for a selected product is available for review.



If the License Key for your product is not readily available for the license transfer, select the "Copy License Key" button to send your License Key to the clipboard.

To deactivate a listed product, select it and press the "Deactivate" button. The below confirmation dialog will appear. After selecting "Yes", the product will be removed from the list.



Then, open the list of Services installed on the computer and Stop the "Neurotechnology" Service. After stopping the Service, R:Biometric can be successfully uninstalled.

Part



4 Single Computer Fingerprint Scanner Installation

The following instructions must be followed in order to correctly set up your R:Biometric software and hardware for an individual workstation where the scanner and USB dongle will be located on the same computer.

1. Make sure to log onto the computer as the Administrator when installing R:Biometric. Otherwise, you will not be able to install the software properly.
2. Insert the USB dongle into a USB port.
3. Insert the fingerprint scanner into a USB port. Based upon the operating system, drivers may be installed automatically.
4. [Install R:Biometric](#). During the installation, the VeriFinger license activation process will be completed, and the dongle will be set up for use. R:Biometric will install to the following default directory: C:\RBTI\RBiometricX5
5. If a fingerprint scanner driver was not found, drivers are available within the following folder: C:\RBTI\RBiometricX5\Drivers
6. Next, the R:Biometric X.5 Plugin file, RBiometricX5.rbm, must be copied from the R:Biometric program directory (default: C:\RBTI\RBiometricX5) into the R:BASE program directory or the runtime/compiled application directory.

R:BASE Version	Default Program Directory
X.5 (Version 10.5)	C:\RBTI\RBGX5
X.5 Enterprise (Version 10.5)	C:\RBTI\RBGX5E

7. The VeriFinger program DLLs (18) and configuration file, NLicenses.cfg, must be copied from the R:Biometric program directory (default: C:\RBTI\RBiometricX5) into the R:BASE program directory or the runtime/compiled application directory. The FPSmm folder must also be copied into the R:BASE program directory or the runtime/compiled application directory. The folder and files are assigned a blue font upon the [software installation](#) page.

R:BASE Version	Default Program Directory
X.5 (Version 10.5)	C:\RBTI\RBGX5
X.5 Enterprise (Version 10.5)	C:\RBTI\RBGX5E

8. If the computer where R:Biometric is installed does not have R:BASE X.5 or R:BASE X.5 Enterprise installed, the R:BASE Engine DLL must be copied from the SYSTEM directory of another computer into the SYSTEM directory.

R:BASE Version	Engine DLL File
X.5 (Version 10.5)	RBENGINEX5.DLL
X.5 Enterprise (Version 10.5)	RBENGINEX5E.DLL

9. On the desktop, R:Biometric X.5 or R:Biometric X.5 Enterprise can now be launched. At this time, with no connection to a database, a fingerprint will appear in the bottom left corner when a finger is placed on the fingerprint scanner.

Before connecting to a database, review the [Initial Launch of R:Biometric](#) details.

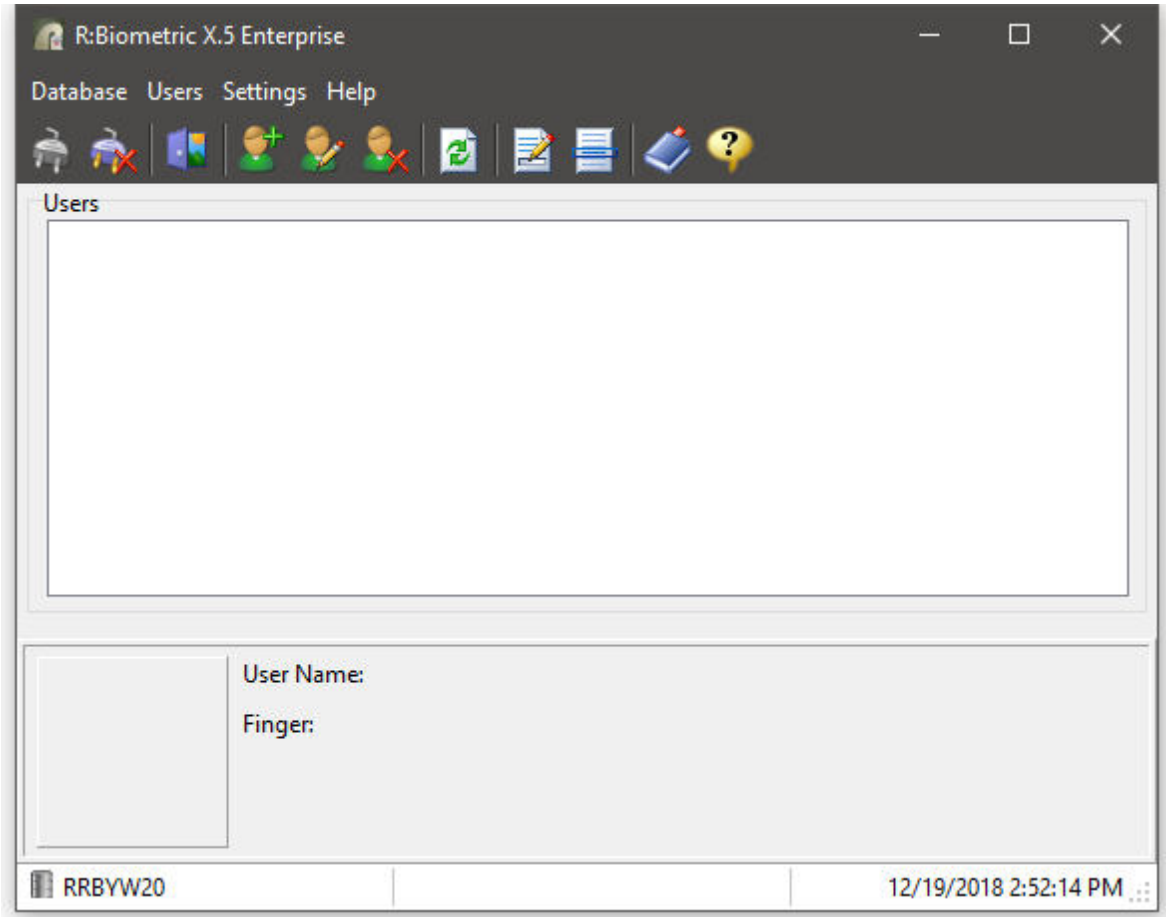
Part



5 Initial Launch of R:Biometric

When R:Biometric is first launched, the "Users" options will be disabled. This and other information will be stored in your R:BASE database.

Before you connect to your R:BASE database, make sure that no other users are connected! The initial connection will add four new tables to your database.



Select the "Connect Database..." button to browse and connect to your R:BASE database. At this point, the new tables have been added to your database. If you launch the Database Explorer in R:BASE, you will see the following tables listed:

Table Name	Comment	Columns	Rows	Date/Time ▼
1. RB_Events	R:Biometric - Events	3	0	12/19/2018 02:51 PM
2. RB_Fingerprints	R:Biometric - Fingerprints	5	0	12/19/2018 02:51 PM
3. RB_Users	R:Biometric - Users	43	2	12/19/2018 02:51 PM
4. RB_FPTypes	R:Biometric - Finger Types	2	10	12/19/2018 02:51 PM

Using the R:Biometric [interface](#), users can be added to the database.

Part



6 User Interface

The R:Biometric executable is primarily used for adding and editing users that will log in with their fingerprints and for altering the settings available for the particular fingerprint scanner installed. In order to use the R:Biometric plugin with R:BASE, users must be added to the R:BASE database.

6.1 Menu Bar

Database

- [Connect...](#) - allows you to connect to a database
- [Disconnect](#) - disconnects from the database
- [Connection History](#) - provides a history of previously connected databases
- [Exit](#) - exits R:Biometric

Users

- [Add New User...](#) - opens a dialog window to add a new user
- [Edit Existing User...](#) - opens a dialog window to edit a selected user
- [Delete User](#) - deletes the selected user
- [Refresh](#) - refreshes the user list












Settings

- [Enrollment Settings](#) - displays the [Enrollment Settings](#)
- [Matching Settings](#) - displays the [Matching Settings](#)
- [Fingerprint scanners](#) - shows the scanner list, and allows you to switch fingerprint scanners

Help

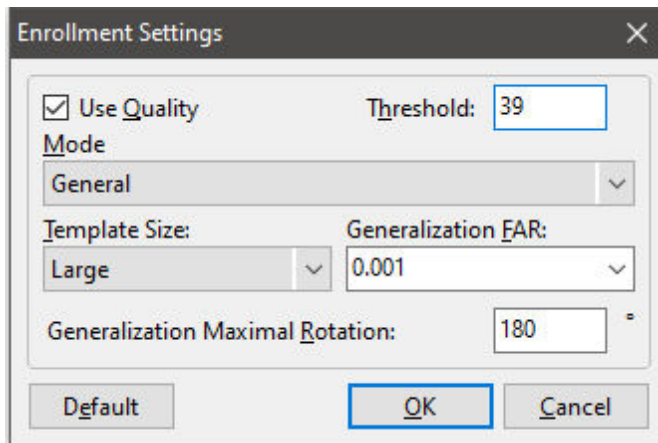
- [Help](#) - displays the R:Biometric in-line help documentation
- [About](#) - displays current information about your product such as version

6.2 Tool Bar

Button	Description
	connects to a database
	disconnects from the database
	exits R:Biometric
	opens a dialog window to add a new user
	opens a dialog window to edit a selected user
	deletes the selected user
	refreshes the user list
	displays the Enrollment Settings
	displays the Matching Settings
	displays the R:Biometric in-line help documentation
	displays current information about your product such as version

6.3 Enrollment Settings

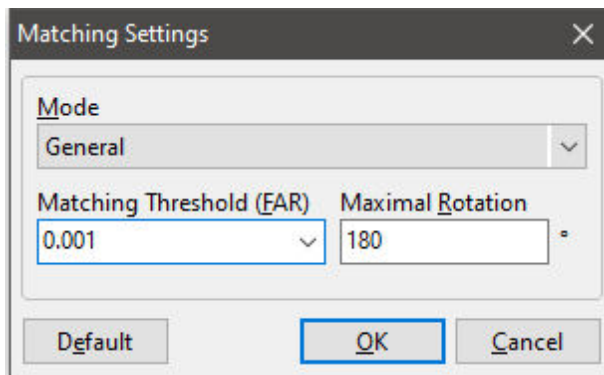
These settings are used when recording fingerprint information for users.



Parameter	Description
Use quality	If checked, fingerprint quality check is performed during enrollment. If fingerprint's quality threshold is less than specified value, fingerprint template will not be created.
Threshold	Controls how strict rules are applied when determining the quality of a fingerprint for extraction.
Mode	Used to select fingerprint features extraction mode optimized for particular scanner.
Template size	Specifies the size of fingerprint image templates. Can be a Large or Small template. It is recommended to use the large template size.
Generalization FAR	Specifies the generalization false rejection rate.
Generalization Maximal Rotation	Specifies the maximal fingerprint's rotation value.

6.4 Matching Settings

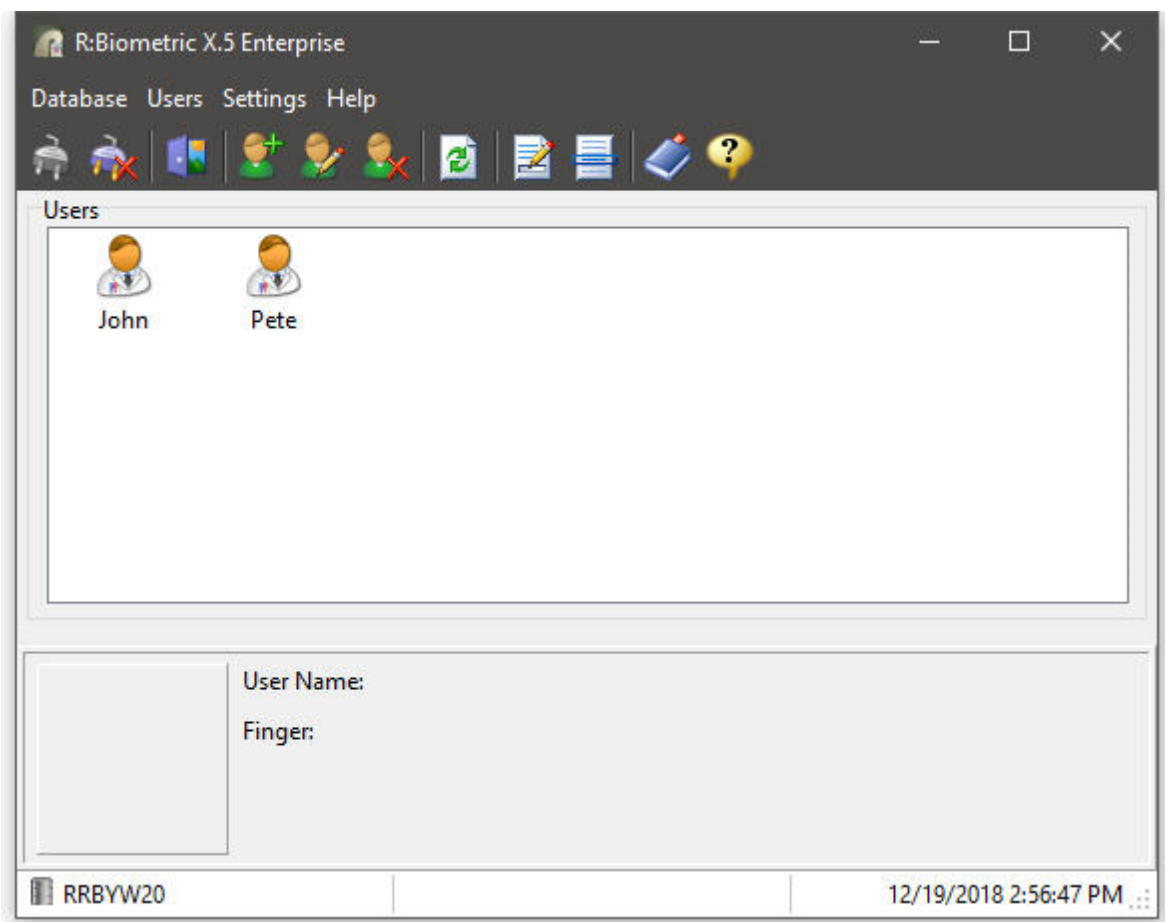
These settings are used when matching fingerprint information for users logging in against users stored within the database.



Feature	Description
Mode	Used to perform matching optimized for a particular fingerprints scanner
Matching Threshold (FAR)	Specifies the threshold that separates identical and different fingerprints. Matching threshold is linked to false acceptance rate (FAR, different fingerprints erroneously accepted as of the same) of matching algorithm. The higher is threshold, the lower is FAR and higher FRR (false rejection rate, same fingerprints erroneously accepted as different) and vice a versa.
Maximal Rotation	Specifies the maximal fingerprint's rotation value.

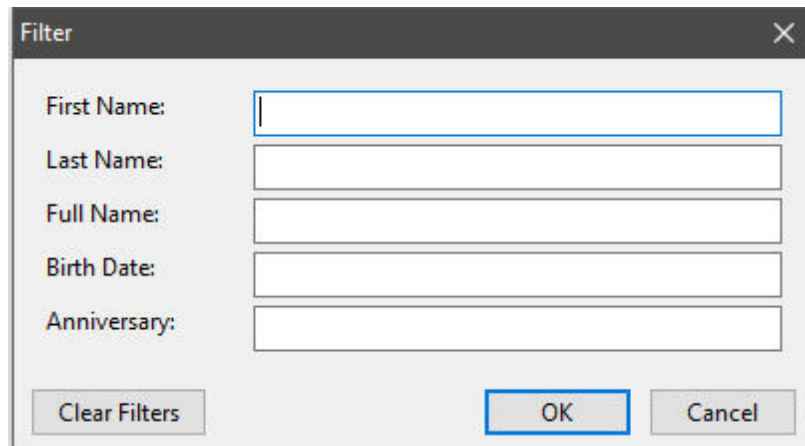
6.5 Users

The Users' options include the ability to add new users, edit existing users, delete a user, and refresh the user list.



Filter Users

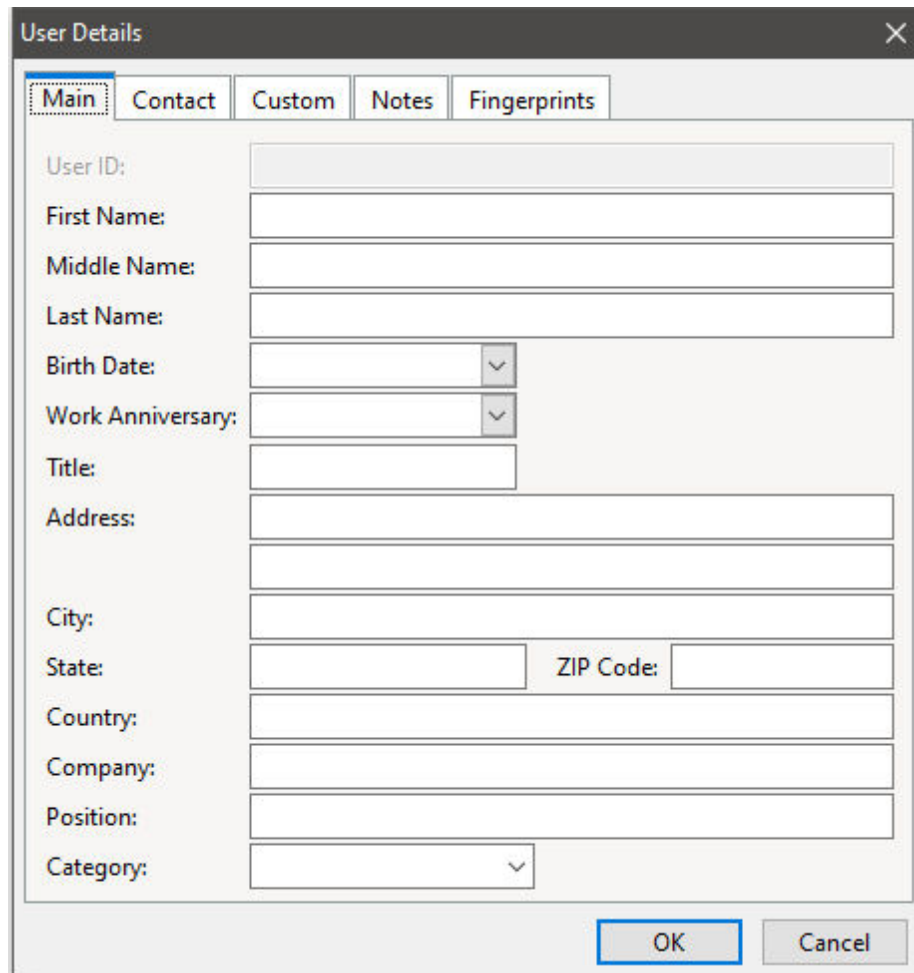
The list of displayed users may be filtered to a specific name, birth date, and anniversary criteria. The filter also allows for fields to be combined for more specific results. Press [Ctrl+F] to filter the users list. To clear the filter, press [Ctrl+F] again, and select the "Clear Filters" button.



A dialog box titled "Filter" with a close button (X) in the top right corner. It contains five text input fields: "First Name:", "Last Name:", "Full Name:", "Birth Date:", and "Anniversary:". The "First Name" field is currently selected with a blue border. At the bottom, there are three buttons: "Clear Filters", "OK", and "Cancel".

6.5.1 Main

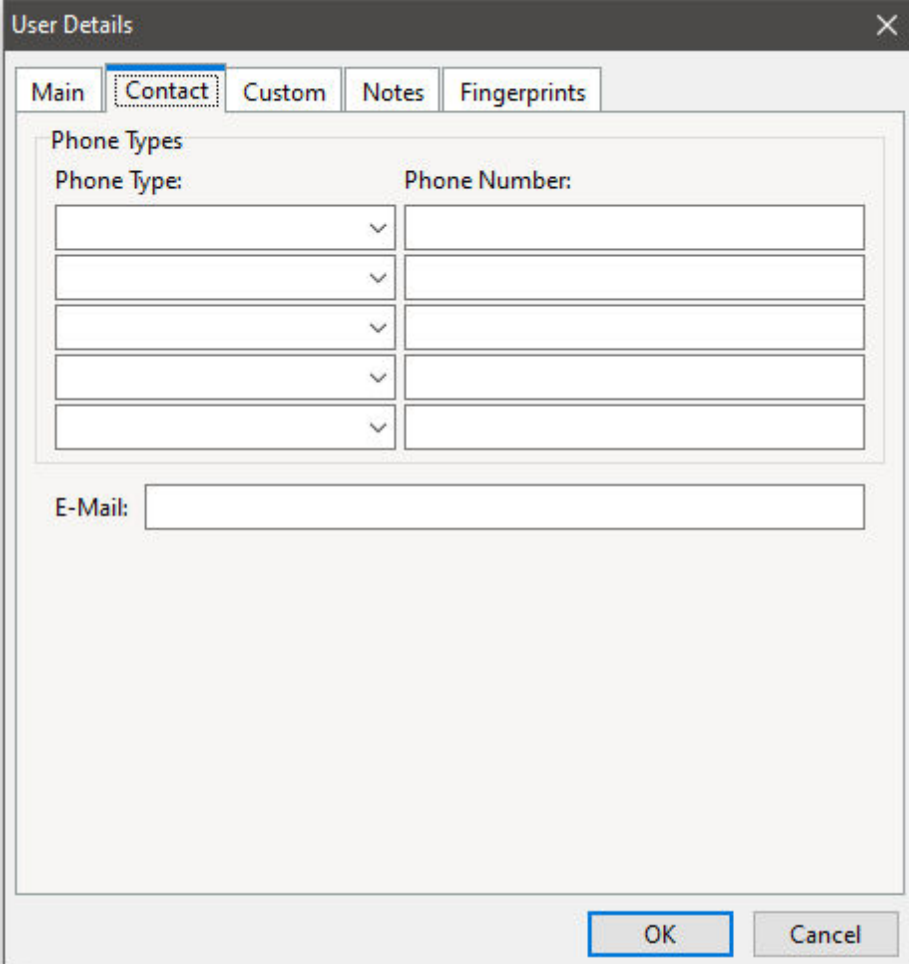
Specifies general information for a user.



A dialog box titled "User Details" with a close button (X) in the top right corner. It features a tabbed interface with five tabs: "Main", "Contact", "Custom", "Notes", and "Fingerprints". The "Main" tab is selected and highlighted with a blue border. Below the tabs are several input fields: "User ID:" (disabled), "First Name:", "Middle Name:", "Last Name:", "Birth Date:" (with a dropdown arrow), "Work Anniversary:" (with a dropdown arrow), "Title:", "Address:" (two stacked text boxes), "City:", "State:" (with a dropdown arrow), "ZIP Code:" (with a dropdown arrow), "Country:" (with a dropdown arrow), "Company:", "Position:", and "Category:" (with a dropdown arrow). At the bottom right, there are "OK" and "Cancel" buttons.

6.5.2 Contact

Specifies phone and email contact information for a user.



The screenshot shows a dialog box titled "User Details" with a close button (X) in the top right corner. The dialog has five tabs: "Main", "Contact", "Custom", "Notes", and "Fingerprints". The "Contact" tab is selected and highlighted with a blue border. Inside the "Contact" tab, there is a section titled "Phone Types" which contains a table with two columns: "Phone Type:" and "Phone Number:". There are five rows in this table, each with a dropdown arrow in the "Phone Type:" column and an empty text input field in the "Phone Number:" column. Below the "Phone Types" section is an "E-Mail:" label followed by a single-line text input field. At the bottom right of the dialog, there are two buttons: "OK" and "Cancel".

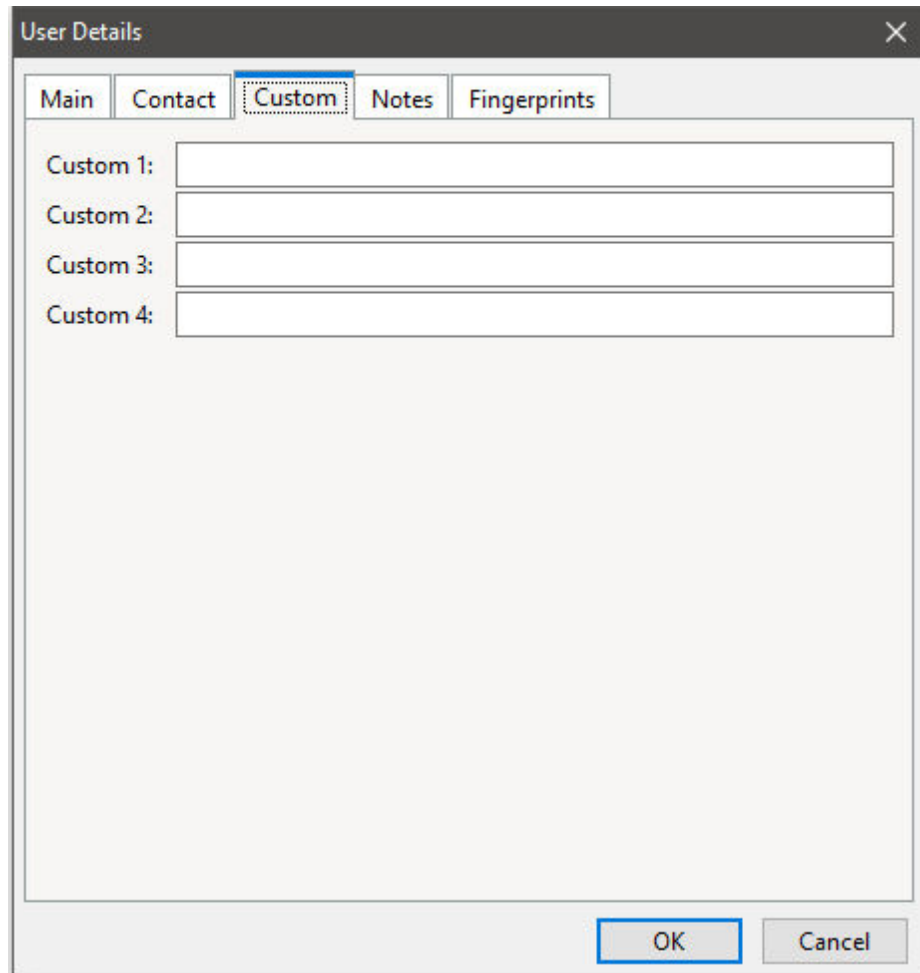
Phone Type:	Phone Number:
▼	
▼	
▼	
▼	
▼	

E-Mail:

OK Cancel

6.5.3 Custom

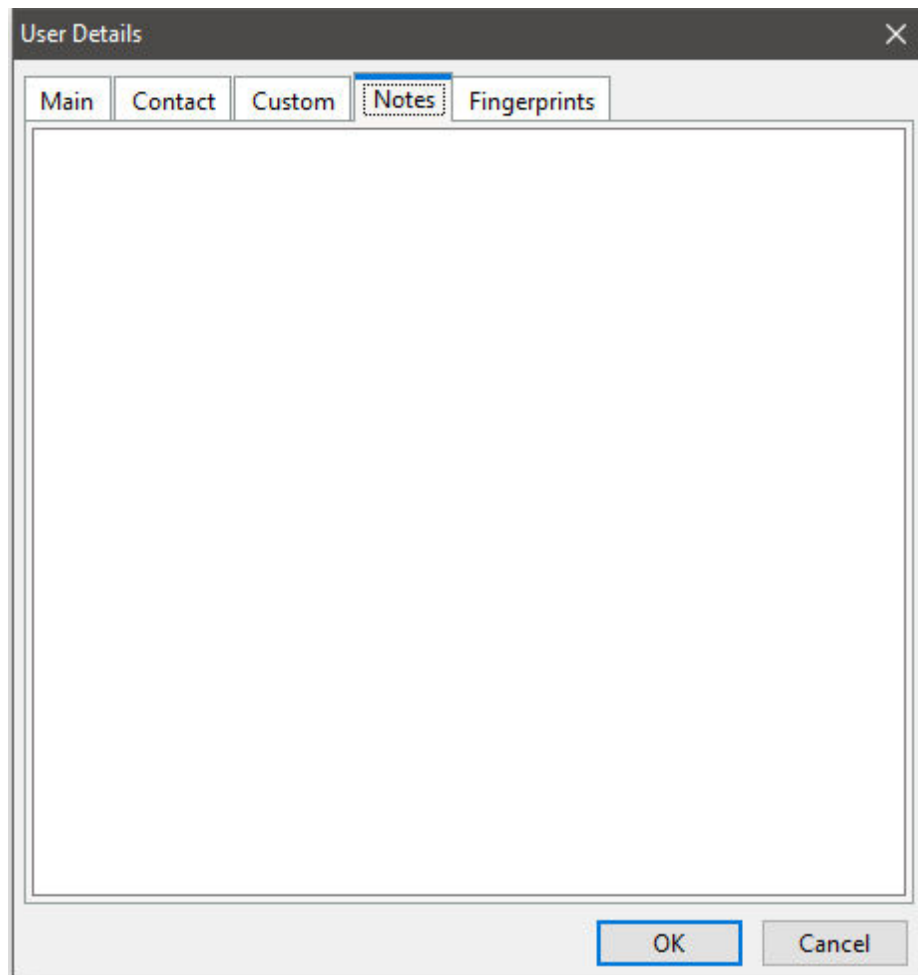
Specifies custom contact fields for a user.



The image shows a screenshot of a software dialog box titled "User Details". The dialog has a tabbed interface with five tabs: "Main", "Contact", "Custom", "Notes", and "Fingerprints". The "Custom" tab is currently selected and highlighted with a blue border. Inside the "Custom" tab, there are four vertically stacked text input fields, each preceded by a label: "Custom 1:", "Custom 2:", "Custom 3:", and "Custom 4:". The input fields are empty. At the bottom right of the dialog, there are two buttons: "OK" and "Cancel". The "OK" button is highlighted with a blue border.

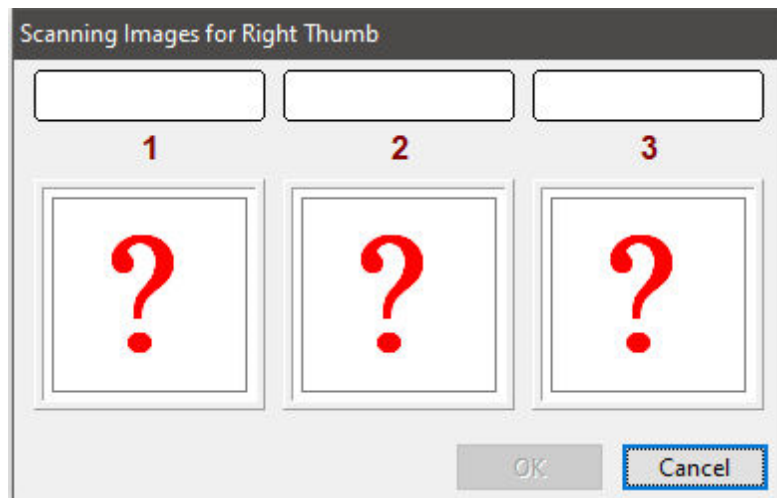
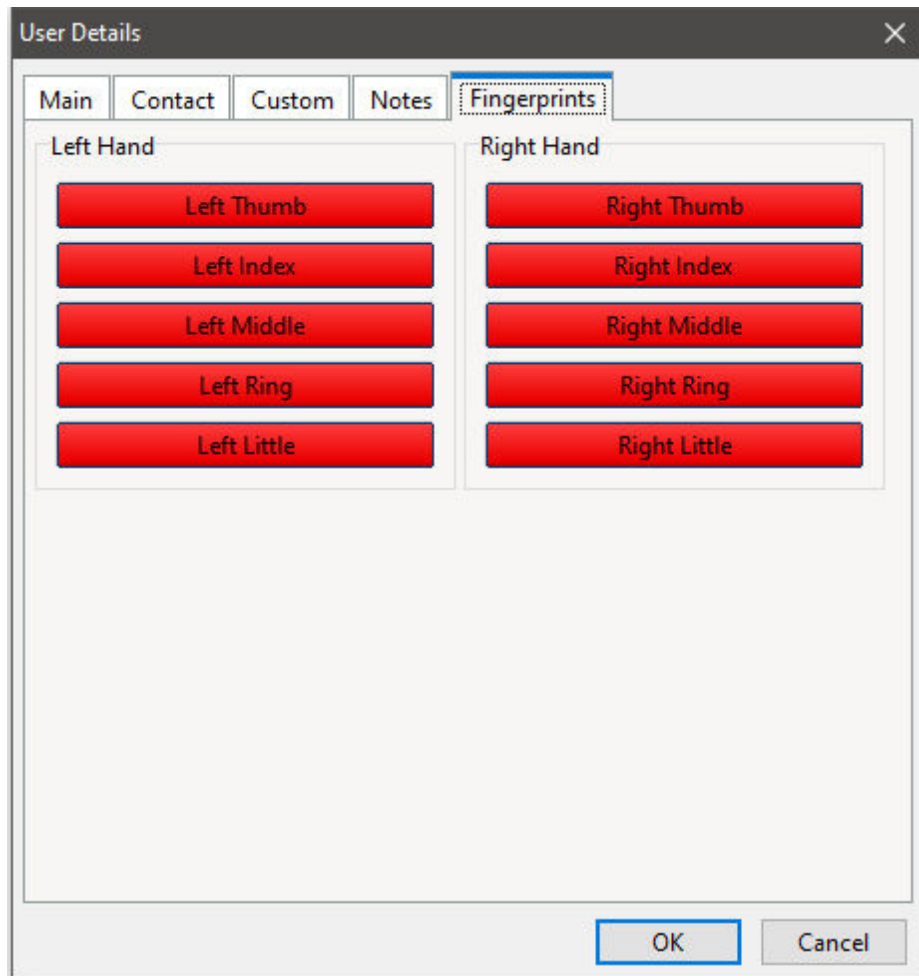
6.5.4 Notes

Specifies notes for a user.



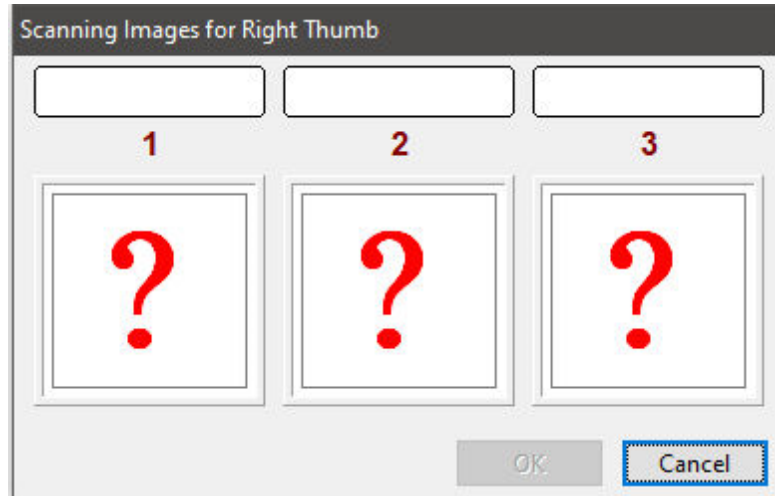
6.5.5 Fingerprints

Specifies fingerprint information for a user. The finger specific buttons will remain red until a print has been recorded for the finger. Click on any of the buttons to record a fingerprint. There will be three recording needed for each finger. Once a print has been recorded, the button will turn green.

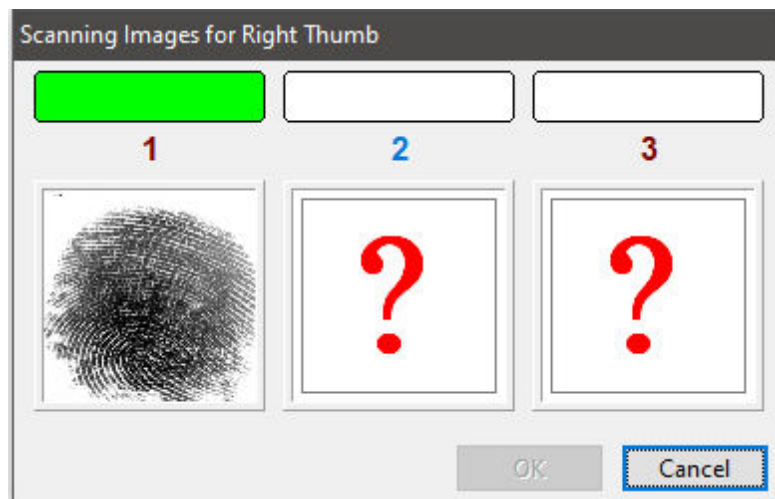


6.5.5.1 Add a Fingerprint

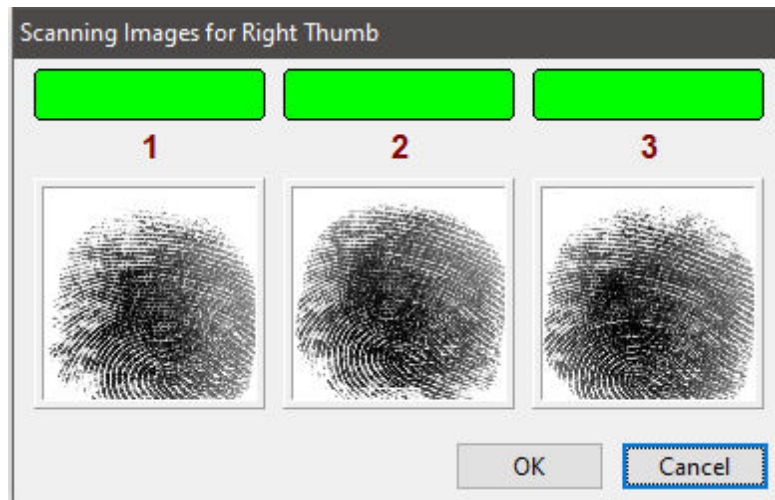
To add a fingerprint for a finger, select the appropriate button for the finger you want to scan. The following prompt will be displayed. The values one through three represent three attempts that must be made for each finger.



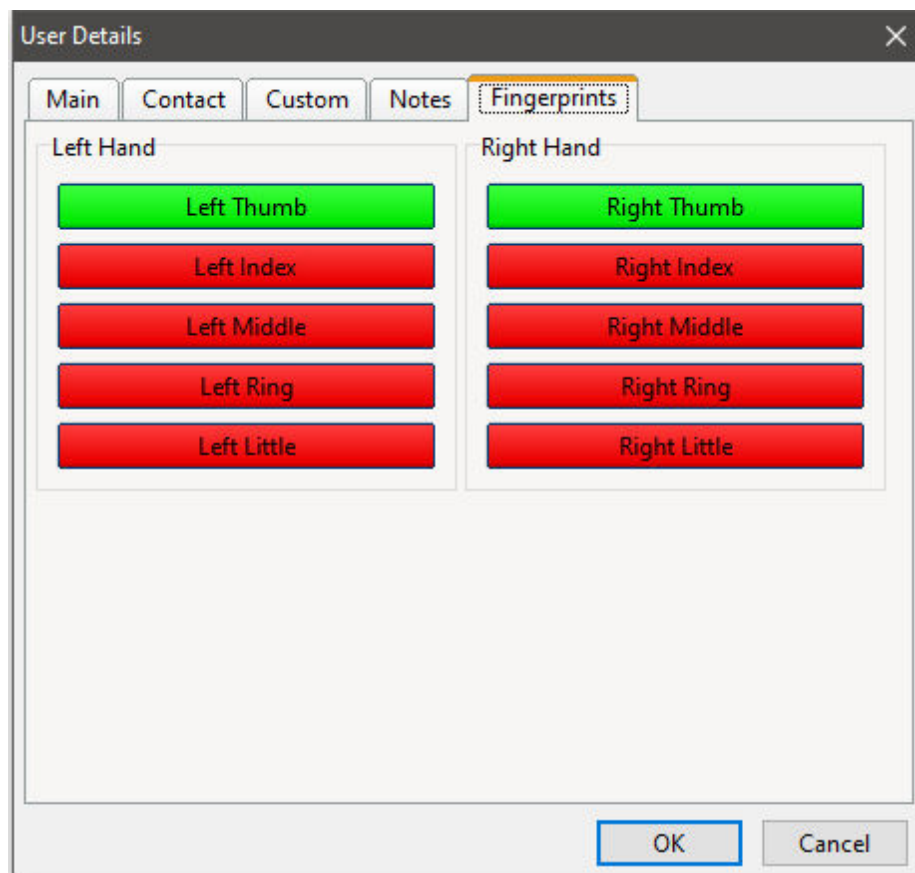
Once you place the finger on the scanner, the device will begin capturing the fingerprint information. Keep the finger on the scanner until the red field turns green.



Then, remove and replace the finger on the scanner two more times for the colors above "2" and "3" to turn green as well.



After the scans are complete, the appropriate finger will be color coded to green that a print has been stored.



Part



7 Command Syntax

R:Biometric includes a plugin to instruct the scanner when to start and stop scanning from within your application. As per the [installation](#) instructions, the plugin and VeriFinger files must be located within the R:BASE program directory.

Syntax:

```
PLUGIN RBiometric vResult|Parameters
```

Parameters:

Parameter	Value	Description
START		Instructs the scanner to start scanning for a fingerprint
ENROLL		Specifies to enroll a user in the RB_Fingerprints table. The USERID and FPID parameters are required for the plugin to know the user and what finger is being scanned/registered.
USERID		Specifies the RB_UserID value (user ID)
FPID		Specifies the RB_FPID value (finger type ID)
STOP		Instructs the scanner to stop scanning for a fingerprint
ENROLL_USE_QUALITY	ON OFF	When ON, fingerprint quality check is performed during enrollment. If fingerprint's quality threshold is less than specified value, fingerprint template will not be created
ENROLL_QUALITY_THRESHOLD	0...100	Specifies how strict rules are applied when determining the quality of a fingerprint for extraction.
ENROLL_TEMPLATE_SIZE	SMALL LARGE	Specifies the size of fingerprint image templates. Can be a Large or Small template. It is recommended to use the large template size.
ENROLL_GENERALIZATION_THRESHOLD	0.1 0.01 0.001 0.00	Specifies the generalization false rejection rate.
ENROLL_MAX_ROTATION	0...360	Specifies the maximal fingerprint's rotation value.
MATCHING_THRESHOLD	0.1 0.01 0.001 0.000000002	Specifies the threshold that separates identical and different fingerprints. Matching threshold is linked to false acceptance rate (FAR, different fingerprints erroneously accepted as of the same) of matching algorithm. The higher is threshold, the lower is FAR and higher FRR (false rejection rate, same fingerprints erroneously accepted as different) and vice versa.
MATCHING_MAX_ROTATION	0...360	Specifies the maximal fingerprint's rotation value.

Where:

vResult is the text variable to return the status

Text Variable	Description
OK	No errors
-ERROR-	Displays exact error message, if error exists in parameters

Note:

- The variable and parameters must be separated by a "|" pipe symbol.
- The scanner must be initialized first, using the START parameter before using the ENROLL parameter, and before applying the "enroll" and "match" settings.
- The enrollment process is similar to the R:Biometric enrollment in the GUI. The same dialog is shown because 3 scans is needed for each finger.
- For enrollment saving, if a row for USERID and FPID does not exist in RB_Fingerprints, then one will be added. Otherwise the RB_FingerprintData of the USERID and FPID row will be updated.

Examples:

```
--Initialize the scanner
PLUGIN RBIOMETRIC vStart|START

--Use RBiomtric as usual
-- ...
-- ...

--Enroll users
PLUGIN RBIOMETRIC vResult|ENROLL|USERID 8|FPID 1 -- right thumb for user 8
PLUGIN RBIOMETRIC vResult|ENROLL|USERID 8|FPID 6 -- left thumb for user 8

PLUGIN RBIOMETRIC vResult|ENROLL|USERID 5|FPID 1 -- right thumb for user 5
PLUGIN RBIOMETRIC vResult|ENROLL|USERID 5|FPID 6 -- left thumb for user 5

PLUGIN RBIOMETRIC vResult|ENROLL|USERID 9|FPID 1 -- right thumb for user 9
PLUGIN RBIOMETRIC vResult|ENROLL|USERID 9|FPID 6 -- left thumb for user 9

--At the end of the application, close the scanner
PLUGIN RBIOMETRIC vStop|STOP
```

Part

VIII

8 Command Line Parameters

R:Biometric supports a database connection command line parameter to include within desktop shortcut properties, or use with the R:BASE LAUNCH command. The "DB CONNECT" parameter supports the same syntax as the R:BASE CONNECT command.

-DB CONNECT - specifies to launch R:Biometric and automatically connect to a database. An owner name and user may be specified for password protected databases.

-NO_DBOWNER_CHECK- specifies to launch R:Biometric and automatically connect to a password protected database, where the user account is not the OWNER

Notes:

- The DB CONNECT string must be enclosed in quotes.

Desktop Shortcut Examples (Target field):

```
C:\RBTI\RBiometricX5\RBiometricX5E.exe "-DB CONNECT RRBYW20"
```

```
C:\RBTI\RBiometricX5\RBiometricX5E.exe "-DB CONNECT RRBYW20 IDENTIFIED BY DOWNER"
```

```
C:\RBTI\RBiometricX5\RBiometricX5E.exe "-DB CONNECT RRBYW20 IDENTIFIED BY SAM  
SAM1234" -NO_DBOWNER_CHECK
```

LAUNCH Command Examples:

```
LAUNCH 'C:\RBTI\RBiometricX5\RBiometricX5E.exe|"-DB CONNECT RRBYW20"'
```

```
LAUNCH 'C:\RBTI\RBiometricX5\RBiometricX5E.exe|"-DB CONNECT RRBYW20 IDENTIFIED BY  
DOWNER"'
```

```
LAUNCH 'C:\RBTI\RBiometricX5\RBiometricX5E.exe|"-DB CONNECT RRBYW20 IDENTIFIED BY  
SAM SAM1234" -NO_DBOWNER_CHECK'
```

Part

IX

9 R:Biometric Integration

Integrating R:Biometric within your R:BASE application is performed by using an R:BASE form to capture the information returned by the fingerprint scanner. When creating the form, the "On Before Start" and "On after Close" EEPs should be used to run the PLUGIN command parameters to START and STOP the scanning of fingerprints.

The form should contain a DB Edit or Variable Edit field as the single location for focus. A DB or Variable Edit field should be used as a password character can be defined so the actual value on the screen is not displayed.

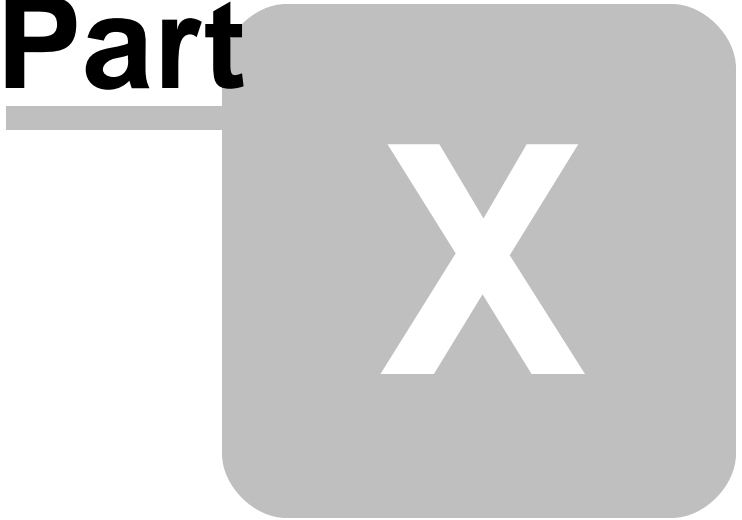
After the users are added to the database within the R:Biometric interface, a unique key integer value was automatically assigned to each user. Reviewing the contents of the **RB_Users** table will display the users and the unique column, **RB_UserID**, which stores the integer. The value stored in the RB_UserID column is what will be returned into the form field.

So, when the fingerprint scanning has been started, and the finger is placed on the scanner, the RB_UserID value is inserted into the field followed by a hard return/carriage return. With the hard return provided with the RB_UserID value, a second field should be added to the form so the cursor focus has somewhere to land. This field does not need to be displayed and can be set to a width of 0.

For an example of the above, please refer to the RBio_Login form in the sample database within the R:Biometric program directory.

Before using R:Biometric in a form, please be sure to activate the Plugin by selecting "Help" > "Product Activation" from the main Menu Bar.

Part



10 Technical Support

Please read over the help documentation at least once before seeking support. We have worked very hard to make the help documentation clear and useful, but concise. It is suggested that you reread these instructions once you have become accustomed to using the software, as new uses will become apparent.

If you have further questions, and cannot find the answers in the documentation, you can obtain information from the below sources:

- Email our Technical Support Staff at: support@rbase.com
- Access the R:BASE Technologies Support home page online at <https://www.rbase.com/support>

You may be required to purchase a technical support plan. Several support plans are available to suit the needs of all users. [Available Technical Support Plans](#)

Please be prepared to provide the following:

- The product registration number, which is located on the invoice/order slip for the purchased product
- The type of operating system and hardware in use
- Details regarding your operating environment; such as available memory, disk space, your version of R:BASE, local area network, special drivers, related database structures, application files, and other files that are used or accessed by your application

All provide information will be used to better assist you.

R:BASE Technologies has a number of different services available for R:BASE products. As a registered user, you will receive information about new features for R:BASE and other R:BASE Technologies products. Please remember to register your software. <https://www.rbase.com/register/>

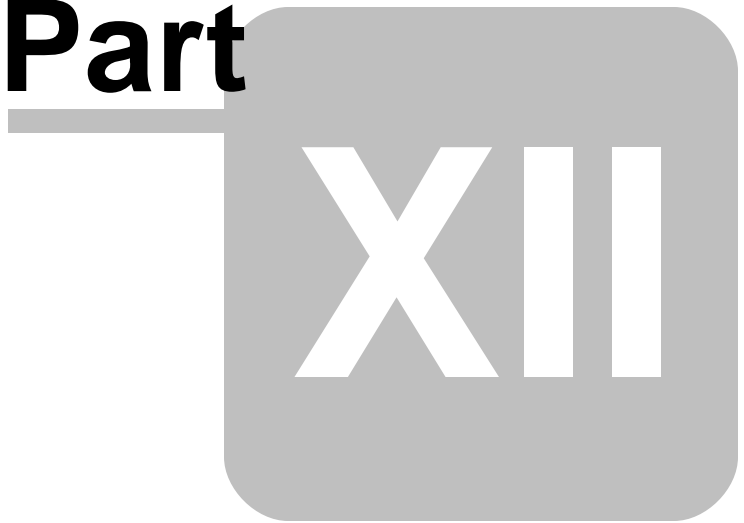
Part

XI

11 Useful Resources

- . R:BASE Home Page: <https://www.rbase.com>
- . Up-to-Date R:BASE Updates: <https://www.rbaseupdates.com>
- . Current Product Details and Documentation: <https://www.rbase.com/rbgx5>
- . Support Home Page: <https://www.rbase.com/support>
- . Product Registration: <https://www.rbase.com/register>
- . Official R:BASE Facebook Page: <https://www.facebook.com/rbase>
- . Sample Applications: <https://www.razzak.com/sampleapplications>
- . Technical Documents (From the Edge): <https://www.razzak.com/fte>
- . Education and Training: <https://www.rbase.com/training>
- . Product News: <https://www.rbase.com/news>
- . Upcoming Events: <https://www.rbase.com/events>
- . R:BASE Online Help Manual: <https://www.rbase.com/support/rsyntax>
- . Form Properties Documentation: <https://www.rbase.com/support/FormProperties.pdf>
- . R:BASE Beginners Tutorial: <https://www.rbase.com/support/rtutorial>
- . R:BASE Solutions (Vertical Market Applications): <https://www.rbase.com/products/rbasesolutions>

Part



12 Feedback

Suggestions and Enhancement Requests:

From time to time, everyone comes up with an idea for something they'd like a software product to do differently.

If you come across an idea that you think might make a nice enhancement, your input is always welcome.

Please submit your suggestion and/or enhancement request to the R:BASE Developers' Corner Crew (R:DCC) and describe what you think might make an ideal enhancement. In R:BASE, the R:DCC Client is fully integrated to communicate with the R:BASE development team. From the main menu bar, choose "Help" > "R:DCC Client". If you do not have a login profile, select "New User" to create one.

If you have a sample you wish to provide, have the files prepared within a zip archive prior to initiating the request. You will be prompted to upload any attachments during the submission process.

Unless additional information is needed, you will not receive a direct response. You can periodically check the status of your submitted enhancement request.

If you are experiencing any difficulties with the R:DCC Client, please send an e-mail to rdcc@rbase.com.

Reporting Bugs:

If you experience something you think might be a bug, please report it to the R:BASE Developers' Corner Crew. In R:BASE, the R:DCC Client is fully integrated to communicate with the R:BASE development team. From the main menu bar, choose "Help" > "R:DCC Client". If you do not have a login profile, select "New User" to create one.

You will need to describe:

- What you did, what happened, and what you expected to happen
- The product version and build
- Any error message displayed
- The operating system in use
- Anything else you think might be relevant

If you have a sample you wish to provide, have the files prepared within a zip archive prior to initiating the bug report. You will be prompted to upload any attachments during the submission process.

Unless additional information is needed, you will not receive a direct response. You can periodically check the status of your submitted bug.

If you are experiencing any difficulties with the R:DCC Client, please send an e-mail to rdcc@rbase.com.

Index

- A -

activate 13, 15
Activation Key 15, 20
add fingerprint 35
administrator 13

- C -

command line 41
Computer ID 15
connect 25
Contact 31
copyrights 6
custom 32

- D -

deactivation 20
desktop shortcut 41
dll 14
dongle 23
driver 14

- E -

enroll 38
enrollment 28, 38
example 38
executable 41

- F -

FAR 28, 38
feedback 49
filter 27, 29
fingerprint 33, 35, 43

- G -

generalization FAR 28, 38
GUI 27

- I -

install 14
installation 23
integration 43
interface 27
intro 6

- K -

key 23
key, activation 13
key, license 13

- L -

license 7, 13
License Key 15, 17, 18, 20
license transfer 20

- M -

Main 30
match 38
matching 28
matching FAR 28, 38
menu bar 27

- N -

notes 33

- O -

options 41

- P -

parameter 41
permission 13
PLUGIN 23, 38
Plugin File 17, 18
properties 41
PROPERTY 18

- Q -

quality 28, 38

- R -

R:Compiler 17

rbm 14

register 15

registration number 13

rotation 28, 38

Runtime 18

- S -

scan 35, 38

scanner 28, 38, 43

settings 28, 38

shortcut 41

size 38

start 38

stop 38

support 11

system requirements 13

- T -

table 25

template 28, 38

template size 28

threshold 28, 38

tool bar 27

- U -

Uninstall 20

users 27, 29, 30, 31, 32, 33

- V -

variable 38

- W -

workstation 23

Back Cover